

Kōrero mai | Let's talk

Ferry Road pedestrian safety improvements submissions

Q2 First Name

Short Text Dom

Q3 Last Name

Short Text Kalasih

Q4 Name of organisation/business

Short Text Transporting New Zealand

Q5 Your role

Short Text Chief Executive

Q10 What do you like about the plan and why?

Long Text See attachment

Q11 What don't you like about the plan and why?

Long Text See attachment

Q12 Do you support the use of speed humps to slow vehicles down on the approaches to the refuge islands?

Multi Choice

Q13 Overall, do you support the Ferry Road pedestrian improvements?

Multi Choice Don't know / Not sure

Q14 Is there anything else we need to know before progressing these plans?

Long Text See attachment



SUBMISSION

To: Christchurch City Council

Submission: Ferry Road Safety Improvements

Date: 26 May 2025

Sent to: letstalk@ccc.govt.nz

Contact: Dom Kalasih, Chief Executive
la Ara Aotearoa Transporting New Zealand
dom@transporting.nz 027 441 4309

Billy Clemens, Policy & Advocacy Lead
la Ara Aotearoa Transporting New Zealand
billy@transporting.nz 04 471 8283

Ia Ara Aotearoa Transporting New Zealand submission to Christchurch City Council on its proposed safety improvements to Ferry Road between Wilsons Road and Aldwins Road

Introduction

- 1 Christchurch City Council (CCC) is proposing to install speed humps and pedestrian refuge crossing points at four locations on Ferry Road spanning approximately 400 metres between Wilsons Road and Aldwins Road. (refer Appendix 1, Figure 1)
- 2 Ferry Road is a vital transport route for commuters traveling from the eastern suburbs to the central city with approximately 20,000 vehicles using the road each day. Currently pedestrians crossing this section of Ferry Road must either wait in the flush median strip or walk to the signalised intersections at Wilsons Road/Moorhouse Ave/Ferry Road or Ensors Road/Aldwins Road/Ferry Road to cross safely.
- 3 Ferry Road is the main emergency response route to Redcliff and Sumner.
- 4 Ia Ara Aotearoa Transporting New Zealand (Transporting New Zealand) welcomes the opportunity to make a submission on CCC's proposal.

Transporting New Zealand comments

- 5 Transporting New Zealand provides sector leadership and believes we all need to operate in an environment where the following must be managed and co-exist:
 - 5.1. The safety and wellbeing of our drivers and other road users, our drivers are our most valuable asset
 - 5.2. The impacts of transport on our environment
 - 5.3. The transport of goods by road is economically feasible and viable and it contributes the best way it can to benefit our economy.
- 6 Transporting New Zealand's members predominantly operate heavy vehicles, and often those are long vehicle combinations, therefore the focus of our submission is on the impact of this proposal on these types of vehicles however, the impacts of this CCC proposal are highly likely to apply to light vehicles as well.
- 7 Transporting New Zealand believes that now more than ever investment in roading and related infrastructure should be scrutinised to ensure value for money and there is a good return on investment.
- 8 CCC have shown the proposed changes on its "Ferry Road Pedestrian Safety Improvements Consultation Plan". Transporting New Zealand is concerned that CCC's proposal appears very siloed in terms of it only being focussed on pedestrian safety.
- 9 CCC surveyed how people cross Ferry Road. That data was collected on a Thursday and a Saturday, between 7am to 7pm. The respective crossing counts for the four project sections are:
 - Leyden St to Philipstown Courts: 344

- Grafton Street to Shirt Street: 270
- Short Street to Osborne St: 19
- Osborne Street to Isabella Street: 148

- 10 Transporting New Zealand is concerned that the volumes and density distribution of the vulnerable road user activities is much less than the 20,000 vehicle movements per day. All of the latter will need to slow down for the speed humps regardless of the level of risk present. On the face of it, that adverse impact appears disproportionately large given the numbers of pedestrians that would benefit, particularly given the pedestrian counts are for 12 hours of two days.
- 11 There have been important learnings from other cities, particularly Wellington and Auckland regarding the slowing of all vehicles. In particular:
- the adverse impact of increased maintenance costs on buses, and more so for low floor buses; and
 - the impact on emergency service vehicles, particularly FENZ vehicles which have target response times to particular locations.

If CCC has not already, Transporting New Zealand recommend it directly and explicitly engage those industries.

- 12 A vehicle travelling at a low steady state speed produces less carbon emissions than a vehicle that accelerates then brakes to slow down for frequent speed humps. Transporting New Zealand recommend CCC include consideration of this in its impact assessment when justifying this proposal.
- 13 Transporting New Zealand has undertaken some initial assessment of peak journey times from the east to the west and northwest of the city. Given the current high levels of congestion on Brougham Street, real time telematics route advice is already recommending motorists take alternative faster routes, despite those roads not being designed for high traffic volumes. Transporting New Zealand sees significant risk that if these four crossings are progressed, a highly predictable perverse outcome will be increased traffic as new “rat runs” are established through residential streets.
- 14 Transporting New Zealand believe an important factor in achieving successful transport outcomes is having consistency in traffic design with the respective environment. CCC does not appear to have a consistent policy in this regard. Transporting New Zealand recommend CCC collaborate with other road controlling authorities and develop policy and design guidance to ensure these risks are managed in a more consistent manner.
- 15 Transporting New Zealand request that before CCC progress further with this project it provide evidence to show the benefit cost/return on investment and justification for this proposal. The CCC investment case should also take a more holistic transport system approach including not only pedestrian safety, but also other transport outcomes such as productivity, environment and perverse outcomes.

About Ia Ara Aotearoa Transporting New Zealand

Ia Ara Aotearoa Transporting New Zealand is a national membership association representing the road freight transport industry. Our members operate urban, rural and inter-regional commercial freight transport services throughout the country.

As the peak body and authoritative voice of the road freight sector, Transporting New Zealand's purpose is creating the environment where trucking operators can drive successful, safe, sustainable businesses. Our focus areas for the period 2025 to 2027:

- Advocacy and policy
- Improving infrastructure to improve productivity
- Making our industry and our members businesses stronger and more resilient
- Sustainability
- Transporting New Zealand business performance

New Zealand's road freight transport industry employs 33,000 people (1.2% of the total workforce), and has a gross annual turnover in the order of \$6 billion. This is part of a wider transport sector that employs 108,000 people and contributes 4.8 percent of New Zealand's GDP. Road freight transport accounts for 93% of the total tonnage of freight moved in New Zealand (MoT National Freight Demands Study 2018).

END

Appendix 1

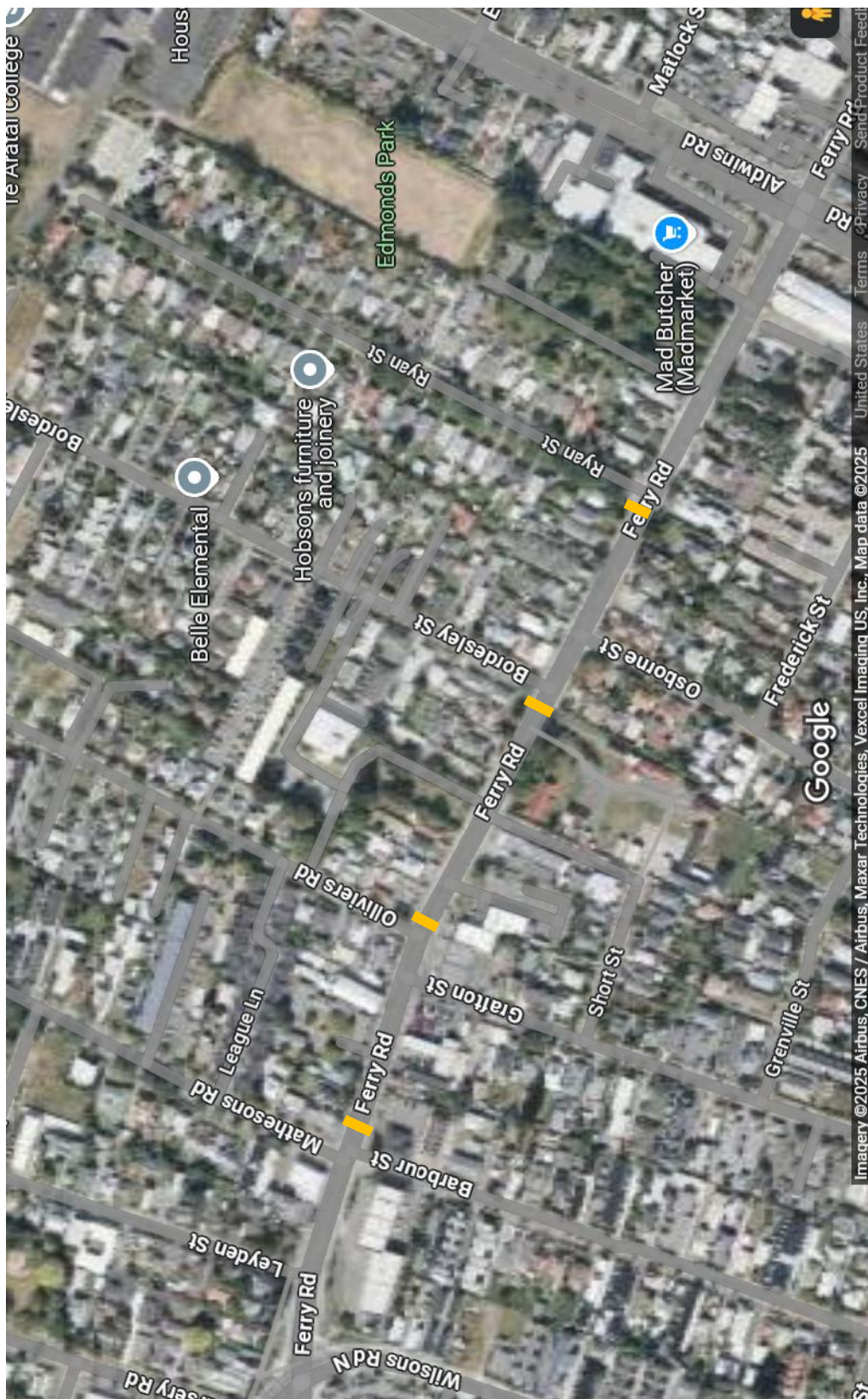


Figure 1: Ferry Road and approximate location of speed humps/pedestrian refuge

Q2 First Name

Short Text Ben

Q3 Last Name

Short Text Selby

Q4 Name of organisation/business

Short Text The AA District Council Canterbury/West Coast

Q5 Your role

Short Text Vice Chairman

Q10 What do you like about the plan and why?

Long Text The new pedestrian refuge island is good idea. Pedestrian safety is of vital importance so to provide a refuge island for crossing on the sections of Ferry Road shown has considerable merit.

Q11 What don't you like about the plan and why?

Long Text It is the view of the AA District Council for Canterbury/West Coast that the use of raised speed humps on the sections of Ferry Road coupled with the pedestrian refuge lands are not only counterproductive to easing congestion but also pose a danger to emergency vehicles. As ambulance and fire services will be traveling at speed to reach an accident scene or incident, travelling at speed over these speed humps on a main road like Ferry Road would mean vital emergency equipment could be damaged and could endanger the well being on people on board, like patients etc.

Q12 Do you support the use of speed humps to slow vehicles down on the approaches to the refuge islands?

Multi Choice No

Q13 Overall, do you support the Ferry Road pedestrian improvements?

Multi Choice Somewhat

Q14 Is there anything else we need to know before progressing these plans?

Long Text

Q2 First Name

Short Text Anne

Q3 Last Name

Short Text Scott

Q4 Name of organisation/business

Short Text Spokes Canterbury

Q5 Your role

Short Text Submissions Coordinator

Q10 What do you like about the plan and why?

Long Text Please see attachment

Q11 What don't you like about the plan and why?

Long Text Please see attachment

Q12 Do you support the use of speed humps to slow vehicles down on the approaches to the refuge islands?

Multi Choice Yes

Q13 Overall, do you support the Ferry Road pedestrian improvements?

Multi Choice Yes

Q14 Is there anything else we need to know before progressing these plans?

Long Text Please see attachment

Ferry Road pedestrian safety improvements

Submission from Spokes Canterbury

Reference: <https://letstalk.ccc.govt.nz/ferryroadimprovements>

Tēnā koutou katoa

Thank you for the opportunity to comment on the **Ferry Road pedestrian safety improvements**

Introduction

Spokes Canterbury (<http://www.spokes.org.nz/>) is a local cycling advocacy group with approximately 1,300 followers. Spokes is affiliated with the national Cycling Action Network (CAN – <https://can.org.nz/>). Spokes is dedicated to including cycling as an everyday form of transport in the greater Christchurch and Canterbury areas. Spokes has a long history of advocacy in this space including writing submissions, presenting to councils, and working collaboratively with others in the active transport space. We focus on the need for safe cycling for those aged 8 to 80. Spokes also supports all forms of active transport, public transport, and has an interest in environmental matters.

Spokes Supports:

- The installation of four pedestrian refuge islands at Ferry/Mathesons/Barbour, Ferry/Olliviers, Ferry/Bordesley and Ferry/Ryan intersections.
- Speed humps on the approaches to the refuge islands to slow vehicles down, making it safer for cyclists and pedestrians to cross.
- Yellow no-parking lines around the pedestrian refuges.
- Removal of 15 car parks to improve sight lines allowing people to cross safely
- Repainting two bus stops outside 256 and 290 Ferry Road to make boundary lines clearer
- A new stop sign at Mathesons Road and formalise the 'give way' functions at Barbour, Grafton, Osborne and Ryan streets by adding signs and line markings.
- The green cycle lane markings on Ferry Road.

Submission #35321

Other Comments:

- Please make sure the refuges are wide enough for wheelchairs, mobility scooters, and cargo bikes.
- We would like to see the current refuge at Smith Street given the same treatment as proposed here, including speed humps. Smith Street is a popular crossing point for pedestrians and cyclists. It avoids the very busy Ferry / Aldwins / Ensors Road intersection and it is used by children to get to Te Waka Unua School.
- Grafton St / Olliviers Road is a good cycling route to connect to Linwood or to New Brighton and is much safer than biking on Aldwins Road. An easier, safer crossing will increase the number of cyclists using this route.
- Cyclists are also using Barbour Street, Mathesons Road, Cross Street, Nursery Road, Stanmore Road (instead of using the Ferry Road crossing and doubling back on the footpath into Nursery Road) to go north or south. A crossing at Barbour St / Mathesons Road will help cyclists use these safer routes.
- We would like to see better wayfinding for these safer connections as part of this project, e.g. to the Heathcote Expressway and the Rapanui Shag Rock cycleway.

I would like the opportunity to present to the Waipapa Papanui-Innes-Central on this submission and I am happy to discuss or clarify any issues that arise.

Ngā mihi nui,

Submissions Co-ordinator
Spokes Canterbury
submissions@spokes.org.nz

Q2 First Name

Short Text Rosemary

Q3 Last Name

Short Text Neave

Q4 Name of organisation/business

Short Text Green Party of Aotearoa New Zealand Aoraki Province

Q5 Your role

Short Text Co-convener

Q10 What do you like about the plan and why?

Long Text

Q11 What don't you like about the plan and why?

Long Text

Q12 Do you support the use of speed humps to slow vehicles down on the approaches to the refuge islands?

Multi Choice Yes

Q13 Overall, do you support the Ferry Road pedestrian improvements?

Multi Choice Yes

Q14 Is there anything else we need to know before progressing these plans?

Long Text

May 26, 2025

Tēnā koutou,



The Aoraki province of the Green Party of Aotearoa New Zealand would like to express our support for the proposed pedestrian safety improvements on Ferry Road. Our province office (The Green Room) is on Ferry Road, directly adjacent to one of the proposed crossing upgrades.

Our branches represent Ōtautahi locals from across the entire city, and we regularly hold events and meetings at our office. We are proud of our diverse whānau, which includes senior citizens and disabled people. For these people, improved pedestrian amenities will hugely increase the accessibility of our space. We are also a political party with a strong environmental kaupapa, and for that reason many of our members travel to our meetings by public or active transport.

Many of our members cycle to meetings, and benefit hugely from the Heathcote Express Major Cycle Route that runs directly past our office. Improving crossing points on Ferry Road will make the area much more accessible for cyclists. We would therefore like to see cyclists taken into account when designing the crossing points. This should include ensuring the median refuges are wide enough for a person with a bicycle. We would also like to see yellow resting rails installed at the waiting points for these crossings, as they provide balance support not only for cyclists but also for pedestrians with mobility issues.

For our members that arrive at meetings using public transport, we would like to see enhancements to the bus stops on Ferry Road. Where space allows, we would like to see the bus stops upgraded to include shelters and rubbish/recycling bins. We would also like raised kerbs to be installed to make boarding and exiting buses easier.

Thank you to the Christchurch City Council, elected members and staff, for working to improve pedestrian facilities across our city.

Ngā mihi nui,

Rosemary Neave and Tim Oliver
Aoraki Province co-conveners

Green Party of Aotearoa New Zealand

Q2 First Name

Short Text David

Q3 Last Name

Short Text Palmer

Q4 Name of organisation/business

Short Text Greater Ōtautahi

Q5 Your role

Short Text Member

Q10 What do you like about the plan and why?

Long Text Our comments are in the attached PDF file.

Q11 What don't you like about the plan and why?

Long Text

Q12 Do you support the use of speed humps to slow vehicles down on the approaches to the refuge islands?

Multi Choice Yes

Q13 Overall, do you support the Ferry Road pedestrian improvements?

Multi Choice Yes

Q14 Is there anything else we need to know before progressing these plans?

Long Text



Greater Ōtautahi Ferry Road Pedestrian Safety Improvements

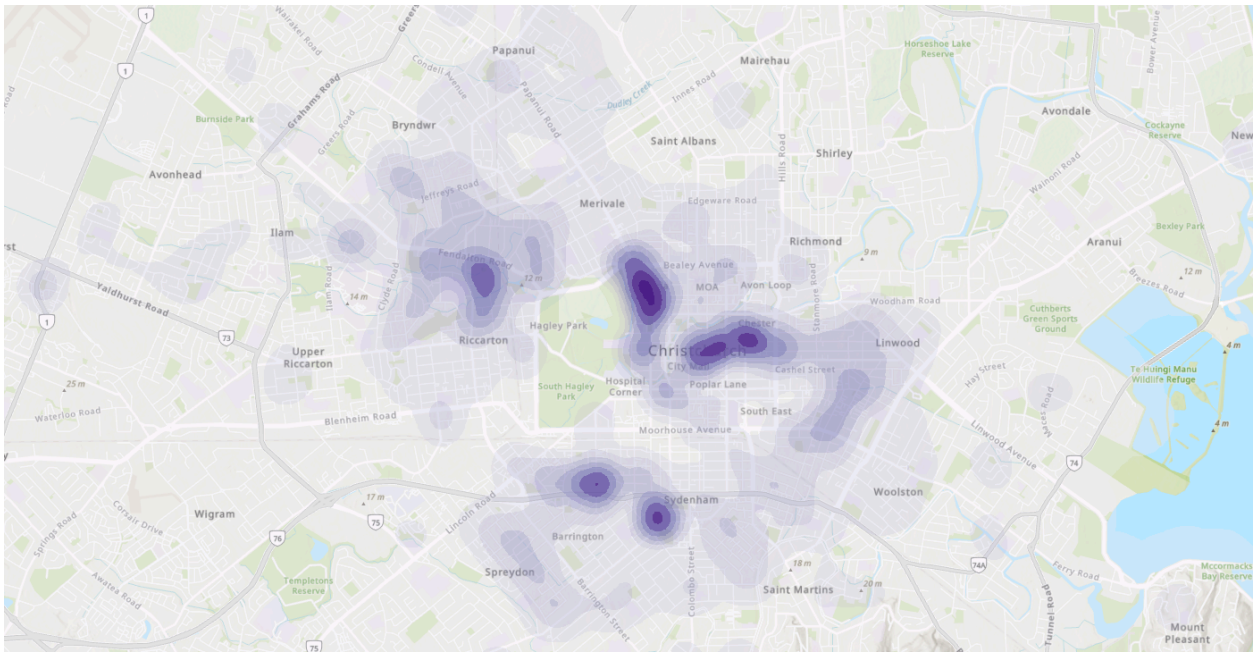
May 2025

<https://greaterotautahi.nz/>

Kia ora,

We are pleased to see the proposed improvements to pedestrian safety on Ferry Road.

In a recent analysis conducted by one of our members, this area of Phillipstown was identified as an area that is likely to experience significant development in coming years. Infill housing intensification has already begun in this area. In order to serve this added population, it is important that Council gets the pedestrian connections right *now*, rather than waiting until the need has already arisen.



This (rough) map shows the ratio of land value to improvement value in the city. A high ratio (marked in darker purple) indicates an area that is likely to be attractive for developers to intensify. Phillipstown is one such area.

In a dense urban environment, the most important transport mode is walking, as the proximity of amenities makes walking a more attractive option. This has huge benefits for the city in terms of safety, reducing carbon emissions and reducing road congestion.

Council has already done excellent work improving the cycling connections on the north-western section of Ferry Road. It therefore makes sense to continue this mahi to improve other active modes further to the south-east.

This section of Ferry Road includes community housing facilities, such as the Phillipstown Courts. It also hosts a number of businesses, including a pharmacy, medical clinic, post office, dairy, and others. These businesses will benefit from greatly improved pedestrian accessibility.

We are **generally supportive** of the proposed crossing locations, although we have notes on the detailed designs of each.

General feedback and design notes

In general, we would prefer to see these crossings implemented using **zebra crossings**. Zebra crossings provide a huge safety advantage for pedestrians, as they bring vehicles to a complete stop at the crossing. On a busy road like Ferry Road, opportunities to cross can be limited due to the near-constant stream of traffic. A zebra crossing is a low-cost intervention that can create pedestrian priority, without needing to resort to the expensive option of installing a signalised crossing.

We are generally supportive of the installation of **speed bumps**. Speed bumps reduce the average speed of vehicles through the crossing location, increasing driver reaction time, and reducing the harm from a collision when one occurs. However, we would prefer to see these upgraded to be **raised crossings**. Raised crossings similarly reduce the 85th percentile speed of vehicles proceeding through the crossing. They also provide an enormous amenity benefit to pedestrians, by providing continuous same-grade crossing. This makes the crossing point more accessible to those with mobility needs, as well as children on scooters.

We are disappointed that staff have not published traffic count and speed study data at each of these proposed crossing points. This data would be useful for analysing the speed and frequency of vehicles at these locations.

The on-street car parks in this area of Ferry Road have a strange design that straddles the gutter. In practice, this means that those cars are parked on the footpath. We think this stretch of Ferry Road should be redesigned to return this footpath space to pedestrians, rather than parked cars. If a choice needs to be made between footpath space, and car parking space, we think the priority should always be on creating space for pedestrians. Ideally, the cycle lane and the footpath should both adjoin the gutter. As mentioned in our detailed feedback, this would create the opportunity to realign the carriageway and cycle lane to create space for a wider median refuge waiting area.

Matheson Road / Barbour Street / Ferry Road intersection

Our feedback for this intersection is:

1. The proposed Give Way control on Barbour Street should be **upgraded to a full Stop sign control**.
2. A **raised crossing (continuous footpath) should be installed** across the throat of the Barbour Street intersection, to ensure vehicles reduce speed as they make the turn across the crossing point.
3. We **strongly support the kerb buildout** on the east-side of Barbour street, as this reduces the distance pedestrians need to walk, and tightens the radius of the turn cars need to make when turning into Barbour Street. This will reduce turning speeds, and thereby increase pedestrian safety.
4. We **strongly support the proposed no-stopping** control on the south side of Ferry Road. This will increase visibility for both car drivers and pedestrians. The removal of these car parks will have a negligible impact on adjacent businesses, as they mostly have off-street parking available already.
5. The **median refuge in the centre of Ferry Road should be widened**, by slightly realigning the carriageway and cycle lane on the south side of the intersection. A wider median creates space for more people to cross at once, and would make the refuge safer and more useful for cyclists and children on scooters.
6. As discussed in the general design feedback, we believe this crossing should be **upgraded to be a raised zebra crossing**.
7. The road surface of the bus stop on the north side of the road needs to be **repaired and reinforced** to cope with heavier electric bus vehicles.
8. We would like to see a **raised kerb installed at the bus stop** to make the bus more accessible for those with mobility issues.
9. Funding is available for improvements to bus stops as part of the PT Futures programme. That money should be applied to these bus stop improvements, and the work should be aligned with other work proposed here to **reduce traffic management costs and disruption** to users of the area.

Olliviers Road / Ferry Road intersection

Our feedback on this intersection is:

1. As discussed in the general design feedback, we believe this crossing should be **upgraded to be a raised zebra crossing**.
2. The **median refuge in the centre of Ferry Road should be widened**, by slightly realigning the carriageway and cycle lane on the south side of the intersection. The removal of on-street parking has created space that could be repurposed for this. A wider median creates space for more people to cross at once, and would make the refuge safer and more useful for cyclists and children on scooters.

3. A **raised crossing should be installed** across the throat of the Olliviers Road intersection, to provide a continuous same-grade crossing for pedestrians on the north-side of Ferry Road.

Bordesley Street / Ferry Road intersection

Our feedback on this intersection is:

1. As discussed in the general design feedback, we believe this crossing should be **upgraded to be a raised zebra crossing**.
2. The **median refuge in the centre of Ferry Road should be widened**, by slightly realigning the carriageway and cycle lane on the south side of the intersection. The removal of on-street parking has created space that could be repurposed for this. A wider median creates space for more people to cross at once, and would make the refuge safer and more useful for cyclists and children on scooters. We note that the carriageway has been slightly realigned on the north side; this should be in addition to a realignment on the south side.
3. The intersection with Bordesley Street should be **upgraded to a full Stop sign control**.
4. We support painting the waiting line for cars on the Bordesley Street intersection further back. Currently, waiting cars are positioned so as to completely block the pedestrian crossing.
5. We **support the no-stopping restrictions** on the south side of the crossing. This is important to ensure adequate visibility both for pedestrians and car drivers.

Ryan Street / Ferry Road intersection

1. As discussed in the general design feedback, we believe this crossing should be **upgraded to be a raised zebra crossing**.
2. A **raised crossing should be installed** across the throat of the Ryan Street intersection, to ensure vehicles reduce speed as they make the turn across the crossing point.
3. The intersection with Ryan Street should be **upgraded to a full Stop sign control**.
4. The **median refuge in the centre of Ferry Road should be widened**, by slightly realigning the carriageway and cycle lane on the south side of the intersection. The removal of on-street parking has created space that could be repurposed for this. A wider median creates space for more people to cross at once, and would make the refuge safer and more useful for cyclists and children on scooters. We

note that the carriageway has been slightly realigned on the north side; this should be in addition to a realignment on the south side.

5. We **support the no-stopping restrictions** on the south side of the crossing. This is important to ensure adequate visibility both for pedestrians and car drivers.
6. We note that the footpath on the south side of the proposed crossing is very narrow, possibly due to the large hedge that has been grown in front of 322 Ferry Road. This hedge should be cut back to **create footpath space for pedestrians**.

Prepared by David Palmer on behalf of Greater Ōtautahi.

We would like to speak to our submission if the opportunity is available.



[Greater Ōtautahi](#) is a non-partisan urbanist collective consisting of locals who are passionate about making Ōtautahi Christchurch a more sustainable, vibrant, and equitable city. We focus mainly on urban issues of housing, transport, and other facets of sustainable urban living.

Q2 First Name

Short Text Nicola

Q3 Last Name

Short Text Broad

Q4 Name of organisation/business

Short Text Ferry Road Veterinary services Ltd t/a Animal & Bird Hospital

Q5 Your role

Short Text Owner

Q10 What do you like about the plan and why?

Long Text

Q11 What don't you like about the plan and why?

Long Text

The current speed bumps at the intersection of Aldwins/ Ferry Road Installed last year) have already massively impacted our business (and others along Ferry Road). At peak traffic times, traffic is backed up to Woolston Primary School (corner Hopkins and Ferry Road) making access difficult, particularly for veterinary emergencies. Adding yet another traffic flow obstacle (pedestrian crossings) will only exacerbate the problem. Installing a pedestrian crossing would only cater to those too lazy to walk down to the Ferry Road intersection where there is already sufficient pedestrian support to cross safely.

Q12 Do you support the use of speed humps to slow vehicles down on the approaches to the refuge islands?

Multi Choice No

Q13 Overall, do you support the Ferry Road pedestrian improvements?

Multi Choice No

Q14 Is there anything else we need to know before progressing these plans?

Long Text

Q2 First Name

Short Text Omid

Q3 Last Name

Short Text Mousavizadeh

Q4 Name of organisation/business

Short Text Environment Canterbury

Q5 Your role

Short Text Public Transport Operations Planner

Q10 What do you like about the plan and why?

Long Text See attachment

Q11 What don't you like about the plan and why?

Long Text See attachment

Q12 Do you support the use of speed humps to slow vehicles down on the approaches to the refuge islands?

Multi Choice

Q13 Overall, do you support the Ferry Road pedestrian improvements?

Multi Choice Don't know / Not sure

Q14 Is there anything else we need to know before progressing these plans?

Long Text See attachment

Memo

Date	23 rd May 2025
To	Kiran Skelton - Engagement Advisor Christchurch City Council
CC	
From	Environment Canterbury- Public Transport team

Ferry Road pedestrian safety improvements

Please find below Environment Canterbury's response to the proposed Ferry Road pedestrian safety improvements as part of the consultation process.

[Ferry Road pedestrian safety improvements | Kōrero mai | Let's talk.](#)

Environment Canterbury acknowledges and supports the rationale behind the project which focuses on pedestrian and cyclist safety and support for active travel. However, staff have significant concerns that this project will compromise the reliability of public transport using this corridor, and that this has not been sufficiently considered through analysis and the design of the proposed solution.

Reliability is one of the key factors in determining public transport use. A reliable public transport network ensures that passengers can depend on schedules and services, fostering trust and encouraging regular use. Ferry Road is a key public transport corridor servicing:

- **Route 3:** This is a core route and has the highest patronage across all routes on the greater Christchurch network. As a core route this service has a turn up and go frequency, with services operating every 10 minutes weekdays.
- **Route 140:** this route is a key cross-link route with services every 30 minutes

The proposed safety improvements.

From the consultation material and conversations with the project team. The proposal includes:

- Installation of four pedestrian refuge islands at Ferry/Mathesons/Barbour, Ferry/Olliviers, Ferry/Bordesley and Ferry/Ryan intersections. This includes speed humps on the approaches to the refuge islands on both westbound and eastbound directions to slow vehicles.
- Remarking two bus stops outside 256 and 290 Ferry Road to make boundary lines clearer.
- Installation of a new stop sign at Mathesons Road and formalise the 'give way' functions at Barbour, Grafton, Osborne and Ryan streets through signage and line markings.

Following conversations between the project team and Environment Canterbury public transport team we understand:

- Affordability is a key driver of the project, and that the type of control device proposed is not recommended by the NZTA Pedestrian Planning Design Guidelines (PPG) but has been adopted in accordance with local council guidelines.
- Asphalt speed humps were selected to balance safety with a lower impact on other road users.
- Christchurch City Council staff estimate a 6-second delay per bus when negotiating a 75mm speed hump but believes this will have a negligible impact on public transport operations. No specific investigation or modelling has been conducted to verify this assumption.
- Christchurch City Council regards the scheme as a short-term, interim measure ahead of the planned Ferry Road bus lane project.

Summary of the main concerns with the proposal

Following further work with the project team, Environment Canterbury public transport team would like to raise the following concerns with the proposal:

- The scheme appears to reflect a "solutioning" approach—prioritising a predetermined solution rather than developing one based on a comprehensive understanding of the corridor's needs and functionality. This approach seems misaligned with Goals 4 and 5 of the Draft Ōtautahi Christchurch Future Transport Plan 2024–54.
- While Christchurch City Council has committed to improving bus journey times relative to car travel through the PT futures indicative business case, the current proposal appears to move in the opposite direction.
- There is a lack of evidence-based assessment regarding the scheme's impact on public transport. Although Christchurch City Council project staff has stated that buses will experience a delay of six seconds per speed hump, no modelling has been undertaken to confirm this assumption or to assess the cumulative journey time impacts.
- While the scheme has been described as an interim solution ahead of the Ferry Road bus lane upgrade project, there is currently no committed funding allocated for future of public transport on Ferry Road. Moreover, there is no assurance that NZTA funding will be secured through future national land transport programmes.

Recommendations for consideration in approving the final design.

We would like consideration to be given to other options which could improve pedestrian safety but would have a reduced impact on public transport. This includes

- **Speed cushions and bollards:** When properly designed and positioned, speed cushions are more bus-friendly than speed humps. Installing bollards to separate cycle lanes at the same time as cushions would ensure vehicles remain in lane, maintaining safety for all users while mitigating the impact on bus journey time.
- **Signalised crossings:** Signalised crossings typically have a lower impact on public transport operations, as buses are only occasionally delayed when pedestrians are present and would result in improved pedestrian safety.

- **Swedish style speed tables:** These are raised platforms with a single sharp ramp and a gradual descent, offering a smoother ride for buses while still effectively reducing vehicle speeds. Compared to asphalt speed humps, Swedish-style tables act as a more bus-friendly traffic calming treatment.

As this scheme will impact a core route with the highest frequency offered on the network, we recommended further analysis be undertaken to confirm the cumulative impact of the scheme on public transport.

If the current design is approved, Environment Canterbury would like to work with the relevant teams to review options to mitigate and offset the bus journey time delays introduced by this scheme, this could include the installation of additional bus priority measures along the corridor to ensure the reliability of the public transport network.

Q2 First Name

Short Text doug

Q3 Last Name

Short Text drake

Q4 Name of organisation/business

Short Text doug drake motors

Q5 Your role

Short Text owner operator

Q10 What do you like about the plan and why?

Long Text

Q11 What don't you like about the plan and why?

Long Text The traffic plan will affect our access ways to our property and customers parking to visit our business . Pedestrians do have and have had a place to cross safely as has been the case for the tens of years i have been here. We do not support the use of a lot of speed humps as the road has already been congested by the speed humps installed at Aldwins /ferry intersection early this year. as this bring ferry rd to a stand still .during busy times of the day. WE do not think four crossing are required in such a short distance.

Q12 Do you support the use of speed humps to slow vehicles down on the approaches to the refuge islands?

Multi Choice Don't know/not sure

Q13 Overall, do you support the Ferry Road pedestrian improvements?

Multi Choice Somewhat

Q14 Is there anything else we need to know before progressing these plans?

Long Text

Q2 First Name

Short Text

[REDACTED]

Q3 Last Name

Short Text

-

Q4 Name of organisation/business

Short Text

[REDACTED]

Q5 Your role

Short Text

[REDACTED]

Q10 What do you like about the plan and why?

Long Text

Q11 What don't you like about the plan and why?

Long Text

Q12 Do you support the use of speed humps to slow vehicles down on the approaches to the refuge islands?

Multi Choice

Q13 Overall, do you support the Ferry Road pedestrian improvements?

Multi Choice

No

Q14 Is there anything else we need to know before progressing these plans?

Long Text

Reducing the off road parking will affect the local businesses. When there is no car park, potential customers will keep on driving. Most of people have limit time for lunch break. They want to pop out of the car and get some food then leave quickly. Without car park in front of our shop, it will be difficult for us. It is well known that the economy doesn't do well. Most of businesses are struggling to survive. Although we always think in a positive way, there are not many customer around. Recently numbers of businesses were closed. We are trying our best to keep all of our current employees. But we can't afford to lose more customers.

No customers = no businesses. No businesses = No jobs, No businesses plus no jobs= more people will live on benefits= more problems in the local community.

Q2 First Name

Short Text Sydney

Q3 Last Name

Short Text Butler

Q4 Name of organisation/business

Short Text

Q5 Your role

Short Text

Q10 What do you like about the plan and why?

Long Text Yes to pedestrian crossings but no more speed bumps that road is already really bad for traffic jams and speedbumps will only further jam up the roads

Q11 What don't you like about the plan and why?

Long Text Speedbumps that road already gets really backed up speedbumps are increasing traffic and backing it up

Q12 Do you support the use of speed humps to slow vehicles down on the approaches to the refuge islands?

Multi Choice No

Q13 Overall, do you support the Ferry Road pedestrian improvements?

Multi Choice Yes

Q14 Is there anything else we need to know before progressing these plans?

Long Text I like the idea of some crossings or breaks but just not speedbumps it already takes me 10-15 mins just to get from ferry aldwins to ferry wilsons

Q2 First Name

Short Text Nicole

Q3 Last Name

Short Text Egan

Q4 Name of organisation/business

Short Text

Q5 Your role

Short Text

Q10 What do you like about the plan and why?

Long Text Yes put an island for pedestrians to wait, however during peak hours, the traffic is stopped so it's already safe for pedestrians to cross. More raised platforms increase traffic and congestion.

Q11 What don't you like about the plan and why?

Long Text No more raised speed humps. Yes put an island for pedestrians to wait, however during peak hours, the traffic is stopped so it's already safe for pedestrians to cross. More raised platforms increase traffic and congestion

Q12 Do you support the use of speed humps to slow vehicles down on the approaches to the refuge islands?

Multi Choice No

Q13 Overall, do you support the Ferry Road pedestrian improvements?

Multi Choice Somewhat

Q14 Is there anything else we need to know before progressing these plans?

Long Text Have you actually seen the intersection at aldwins/ferry? Peak traffic cars are still running red lights. The way traffic actually moves across that intersection, is more harmful with speed humps, than it was without. I travel this road multiple times a day, and in no way will more raised platforms do any good.

Q2 First Name

Short Text Staanaaalicia

Q3 Last Name

Short Text Guilford

Q4 Name of organisation/business

Short Text

Q5 Your role

Short Text

Q10 What do you like about the plan and why?

Long Text Nothing. It's ridiculous and slows traffic even more. Instead of say 5 mins it will take 15 mins. It's time away from loved ones. Time you never get back. People slave for others why slow down their commute to get to and from work or school?

Q11 What don't you like about the plan and why?

Long Text The safety platforms. Less people stop for them including pedestrians. Use crossing lights instead. And stop wasting people's time sitting in traffic that doesn't need to be congested even more.

Q12 Do you support the use of speed humps to slow vehicles down on the approaches to the refuge islands?

Multi Choice No

Q13 Overall, do you support the Ferry Road pedestrian improvements?

Multi Choice No

Q14 Is there anything else we need to know before progressing these plans?

Long Text What happened to looking left and right before crossing?!

Q2 First Name

Short Text Aleisha

Q3 Last Name

Short Text Hibbs

Q4 Name of organisation/business

Short Text

Q5 Your role

Short Text

Q10 What do you like about the plan and why?

Long Text Nothing it going to slow traffic even more it backed up along ferry road bad now because of speed humps at ensors ferry Rd intersection

Q11 What don't you like about the plan and why?

Long Text It going to slow traffic even more make a overhead bridge.

Q12 Do you support the use of speed humps to slow vehicles down on the approaches to the refuge islands?

Multi Choice No

Q13 Overall, do you support the Ferry Road pedestrian improvements?

Multi Choice No

Q14 Is there anything else we need to know before progressing these plans?

Long Text Your going to cause more traffic jams it puts a strain on bus drivers with backed up traffic . Traffic backing up causes emergency services to not be able to get through in timely manner.

Q2 First Name

Short Text Anthony

Q3 Last Name

Short Text Holliday

Q4 Name of organisation/business

Short Text

Q5 Your role

Short Text

Q10 What do you like about the plan and why?

Long Text Addition of no stopping lines and pedestrian refuge islands, makes it much safer for pedestrians

Q11 What don't you like about the plan and why?

Long Text Speed humps. Slows traffic, causes congestion, extra unnecessary wear and tear on car suspension components and negative effects on emissions from cars, slowing down and powering up

Q12 Do you support the use of speed humps to slow vehicles down on the approaches to the refuge islands?

Multi Choice No

Q13 Overall, do you support the Ferry Road pedestrian improvements?

Multi Choice No

Q14 Is there anything else we need to know before progressing these plans?

Long Text

Q2 First Name

Short Text Cleo

Q3 Last Name

Short Text Dubois

Q4 Name of organisation/business

Short Text

Q5 Your role

Short Text

Q10 What do you like about the plan and why?

Long Text I'm excited for more pedestrian crossings + happy about the speed bumps, I think it would be great to have more safety on this bit of ferry road as I walk by here a lot to get to the shops.

Q11 What don't you like about the plan and why?

Long Text I am happy for more speed bumps but I've noticed there's a lot of congestion on ferry road, especially during rush hour. The speed bumps at the ferry road/ensors road *seem* to have caused more congestion - I'm all for speed humps and for slower speeds, but in my observation it seems that people get frustrated with the bumps and try to speed over them or really take the piss out of going through the 'yellow' light (which is often red by the time people are going through it). Ferry road is so busy already and I think commuters are frustrated. I believe these speed humps are a good idea for this section of ferry road, but I think they'll need to be designed in such a way that people can't just fly over them anyway. Sometimes it's quite annoying that I can't turn right onto Olivier or Mathesons from ferry road due to the islands, but im okay not having that luxury if it keeps pedestrians safer. However, I do think that this creates more congestion on ferry road. If I could actually get off ferry road sooner, there would be one less car there (if that makes sense?). This is a similar problem at the ferry/ensors intersection - because cars are flying through orange and red lights it's very difficult to turn right onto Linwood Ave when I'm on ferry road going toward the city. The traffic light doesn't give a green for right turning so I have to wait for the light to go yellow meaning only one (maybe two cars) can go through. This means that sometimes I will just continue going down ferry road and turn right onto Bordsley street to get to Phillipstown. This is fine, but it does mean that more cars are staying on ferry road for longer. Maybe some action to try and get more cars off ferry road could help with safety? I've been a big fan of the speed bumps and pedestrian crossings in Linwood village (like cashel street and stanmore road round about). The updates for this area seem to slow people down and create a more pleasant driving experience. I'm hopeful and positive that the changes on ferry road will do the same :)

Q12 Do you support the use of speed humps to slow vehicles down on the approaches to the refuge islands?

Multi Choice Yes

Q13 Overall, do you support the Ferry Road pedestrian improvements?

Multi Choice Yes

Q14 Is there anything else we need to know before progressing these plans?

Long Text

Q2 First Name

Short Text Soala

Q3 Last Name

Short Text Latu

Q4 Name of organisation/business

Short Text

Q5 Your role

Short Text

Q10 What do you like about the plan and why?

Long Text Adding in an Island for pedestrians

Q11 What don't you like about the plan and why?

Long Text I don't like the added hump. Ferry Road is already congested as it is during peak hours. Adding this will only back the traffic even further to Fitzgerald Ave or Aldwins Road. Added Island will do

Q12 Do you support the use of speed humps to slow vehicles down on the approaches to the refuge islands?

Multi Choice No

Q13 Overall, do you support the Ferry Road pedestrian improvements?

Multi Choice Somewhat

Q14 Is there anything else we need to know before progressing these plans?

Long Text Island is a good idea but no speed humps

Q2 First Name

Short Text Acacia

Q3 Last Name

Short Text Lane

Q4 Name of organisation/business

Short Text

Q5 Your role

Short Text

Q10 What do you like about the plan and why?

Long Text HATE IT

Q11 What don't you like about the plan and why?

Long Text Slows traffic way too much causing delays and congestion which is more dangerous

Q12 Do you support the use of speed humps to slow vehicles down on the approaches to the refuge islands?

Multi Choice No

Q13 Overall, do you support the Ferry Road pedestrian improvements?

Multi Choice No

Q14 Is there anything else we need to know before progressing these plans?

Long Text STRONGLY APPOSE

Q2 First Name

Short Text Victoria

Q3 Last Name

Short Text Chandler

Q4 Name of organisation/business

Short Text

Q5 Your role

Short Text

Q10 What do you like about the plan and why?

Long Text

Q11 What don't you like about the plan and why?

Long Text

Speed humps especially the number suggested within a small stretch of road.

As one of the 20,000 vehicles that uses this road on an almost daily basis, this plan would make this route to/from work unusable for me. I would need to divert to using Rutherford and Brougham Streets. Particularly as at more peak traffic times the changes proposed are to the stretch of road that is the worst grid locked area of Ferry Road.

Like a number of vehicles I need to brake to either an almost or full stop to then slowly move over each hump, this hugely impacts the overall flow of traffic; this is particularly frustrating and inefficient at areas like this when there are no pedestrians.

The speed humps at the Ferry Road and Ensors Road intersection are particularly severe and have only exacerbated the traffic flow issues on Ferry Road and it's my opinion this plan would too.

In contrast the lower speed limit (30KM) through Heathcote St/Ferry Rd and Palinurus Rd/Ferry Rd in combination with pedestrian refuge islands and some speed tables (not humps) seems to serve both motorists and pedestrians well.

Speed tables or the longer and lower raised platforms seem to be a much more moderate approach that help to slow the 30KM traffic and allow pedestrian movement while not interrupting flow of traffic when there is no pedestrians anywhere near as much.

I would much prefer another slower speed area and if there are speed slowers, please consider using less severe raised obstacles to improve traffic flow.

Q12 Do you support the use of speed humps to slow vehicles down on the approaches to the refuge islands?

Multi Choice No

Q13 Overall, do you support the Ferry Road pedestrian improvements?

Multi Choice Somewhat

Q14 Is there anything else we need to know before progressing these plans?

Long Text

Q2 First Name

Short Text Hannah

Q3 Last Name

Short Text Taylor

Q4 Name of organisation/business

Short Text

Q5 Your role

Short Text

Q10 What do you like about the plan and why?

Long Text I think the plan for Mathesons crossing is great as it's really difficult to cross and I've been hit by a driver not paying attention before. I cross here every weekday on my way to work.

Q11 What don't you like about the plan and why?

Long Text

Q12 Do you support the use of speed humps to slow vehicles down on the approaches to the refuge islands?

Multi Choice Yes

Q13 Overall, do you support the Ferry Road pedestrian improvements?

Multi Choice Yes

Q14 Is there anything else we need to know before progressing these plans?

Long Text

Q2 First Name

Short Text Lorraine

Q3 Last Name

Short Text Tutty

Q4 Name of organisation/business

Short Text

Q5 Your role

Short Text

Q10 What do you like about the plan and why?

Long Text Nothing

Q11 What don't you like about the plan and why?

Long Text 4 Speed bumps to slow down over 20,000 vehicles. They will only contribute to the congestion of traffic already along that road. People only walk across that road because they are too lazy to go to the two controlled crossings that are already there

Q12 Do you support the use of speed humps to slow vehicles down on the approaches to the refuge islands?

Multi Choice No

Q13 Overall, do you support the Ferry Road pedestrian improvements?

Multi Choice No

Q14 Is there anything else we need to know before progressing these plans?

Long Text Great question you put here. Not.
You ask if there's anything you need to know BEFORE PROGRESSING. That means you have already decided and it's going to happen and our input means nothing.

Q2 First Name

Short Text Manaaki

Q3 Last Name

Short Text Gage

Q4 Name of organisation/business

Short Text

Q5 Your role

Short Text

Q10 What do you like about the plan and why?

Long Text

Q11 What don't you like about the plan and why?

Long Text No more speed humps

Q12 Do you support the use of speed humps to slow vehicles down on the approaches to the refuge islands?

Multi Choice No

Q13 Overall, do you support the Ferry Road pedestrian improvements?

Multi Choice No

Q14 Is there anything else we need to know before progressing these plans?

Long Text Don't do it no one wants them, stop wasting money

Q2 First Name

Short Text Sharon

Q3 Last Name

Short Text Crane

Q4 Name of organisation/business

Short Text

Q5 Your role

Short Text

Q10 What do you like about the plan and why?

Long Text Nothing. It's only going to add to the congestion since the last speed humps were put in, and only 1-2 cars can get through at each green traffic light

Q11 What don't you like about the plan and why?

Long Text Speed humps are so expensive, a simple pedestrian crossing would be fine and the congestion along that road is so bad as it is.
We as ratepayers cannot afford any more rate increases.

Q12 Do you support the use of speed humps to slow vehicles down on the approaches to the refuge islands?

Multi Choice No

Q13 Overall, do you support the Ferry Road pedestrian improvements?

Multi Choice No

Q14 Is there anything else we need to know before progressing these plans?

Long Text Please for once listen to the ratepayers as it doesn't seem like you do even when we take the time to fill in these surveys.

Q2 First Name

Short Text Jack

Q3 Last Name

Short Text van Beynen

Q4 Name of organisation/business

Short Text

Q5 Your role

Short Text

Q10 What do you like about the plan and why?

Long Text Efforts to slow speeds on a busy stretch of road. This will benefit me as a commuter cyclist who bikes this stretch of road every day

Q11 What don't you like about the plan and why?

Long Text Could we protect the cycleway better?

Q12 Do you support the use of speed humps to slow vehicles down on the approaches to the refuge islands?

Multi Choice Yes

Q13 Overall, do you support the Ferry Road pedestrian improvements?

Multi Choice Yes

Q14 Is there anything else we need to know before progressing these plans?

Long Text

Q2 First Name

Short Text Brent

Q3 Last Name

Short Text Terry

Q4 Name of organisation/business

Short Text

Q5 Your role

Short Text

Q10 What do you like about the plan and why?

Long Text Nothing about this is acceptable. Waste of money.

Q11 What don't you like about the plan and why?

Long Text We don't need more platforms or cycleways. Cyclist already have a dedicated route 1 block south through phillipstown.
You have slowed the traffic to a crawl with the mess at Aldwins ensors intersection. The traffic barely flows all day.

Q12 Do you support the use of speed humps to slow vehicles down on the approaches to the refuge islands?

Multi Choice No

Q13 Overall, do you support the Ferry Road pedestrian improvements?

Multi Choice No

Q14 Is there anything else we need to know before progressing these plans?

Long Text

Q2 First Name

Short Text Natasha

Q3 Last Name

Short Text Tilbury

Q4 Name of organisation/business

Short Text

Q5 Your role

Short Text

Q10 What do you like about the plan and why?

Long Text I do agree a crossing needs to be in place as I have also noticed many pedestrians crossing ferry rd, particularly between the shops and it will be nicer to know where the specific crossing is, rather than them crossing at multiple points on the street.

Q11 What don't you like about the plan and why?

Long Text I used to drive down ferry multiple times a day, to and from work. But traffic is so busy and it flows even slower now with the speed humps on at the ferry / ensors intersection.
Speed humps will have the desired effect of slowing traffic down, but at what cost when the road already backs up so much I refuse to use it anymore.

Q12 Do you support the use of speed humps to slow vehicles down on the approaches to the refuge islands?

Multi Choice Don't know/not sure

Q13 Overall, do you support the Ferry Road pedestrian improvements?

Multi Choice Somewhat

Q14 Is there anything else we need to know before progressing these plans?

Long Text I think something need to be done, to that section of Ferry Rd for pedestrians but also traffic.

Q2 First Name

Short Text Daniel

Q3 Last Name

Short Text Leonard

Q4 Name of organisation/business

Short Text

Q5 Your role

Short Text

Q10 What do you like about the plan and why?

Long Text Nothing

Q11 What don't you like about the plan and why?

Long Text

The issue is traffic queues caused by the recent ferry road changes at aldwins rd which have resulted in long queues of stationery traffic. I have witnessed several near misses, an accident and nearly been hit my a car turning across the cycle lane between stationery cars, also nearly hit a pedestrian stepping into cycle lane between stationery cars.

More road humps will increase congestion and does not protect pedestrians who will NOT use the refuge zones and will walk through stationery lines of cars into cycle lanes, opposing traffic lanes traveling at 50kmh with zero visibility for motorists / cyclists until they step into the traffic.

I have almost been hit by a car turning across into a side street on Ferry Rd through a line of stationery traffic who could not see me coming in the cycle lane due to poor visibility.

I have almost hit a pedestrian who stepped out between stationery cars into the cycle lane without looking.

I have seen a motorcyclist hit by an oncoming car when turning out of a side street onto Ferry Rd through a line of stationery traffic.

Someone is going to be killed as a result of poor visibility due to increased congestion caused by the recent changes. And made worse by any additional changes that increase congestion.

Q12 Do you support the use of speed humps to slow vehicles down on the approaches to the refuge islands?

Multi Choice No

Q13 Overall, do you support the Ferry Road pedestrian improvements?

Multi Choice No

Q14 Is there anything else we need to know before progressing these plans?

Long Text

Someone is going to be killed as a result of poor visibility due to increased congestion caused by the recent changes on Ferry Rd. And made worse by any additional changes that increase congestion.

Q2 First Name

Short Text Chris

Q3 Last Name

Short Text Fleming

Q4 Name of organisation/business

Short Text

Q5 Your role

Short Text

Q10 What do you like about the plan and why?

Long Text Pedestrian crossing with refuge is a good idea. Lots of people use that area and want to cross the road

Q11 What don't you like about the plan and why?

Long Text Speed humps, despite what the Council seems to think, are not a good idea. Long term, they cause issues with car suspension. Slowing traffic down may seem fine, but it causes a flow-on effect, which causes delays and other problems down the line.

Q12 Do you support the use of speed humps to slow vehicles down on the approaches to the refuge islands?

Multi Choice No

Q13 Overall, do you support the Ferry Road pedestrian improvements?

Multi Choice Somewhat

Q14 Is there anything else we need to know before progressing these plans?

Long Text

Q2 First Name

Short Text Sue

Q3 Last Name

Short Text McPherson

Q4 Name of organisation/business

Short Text

Q5 Your role

Short Text

Q10 What do you like about the plan and why?

Long Text

Q11 What don't you like about the plan and why?

Long Text

Because of the humps there will be traffic back up x10. It's already apparent at the Ferry, Ensors, Aldwins intersection. Which in turn is not making it safer because people are running slower, making them more anxious about being on time, causing restlessness and not paying attention. This in turn will cause more accidents, the very thing you're trying to avoid.
Not only that public transport will also not be able to run on time due to having to slowdown once again due to the humps!! Making the drivers anxious about running on time, and brassed off passengers as well. They in turn take the lateness out on drivers. Not ideal for anyone involved!!

Q12 Do you support the use of speed humps to slow vehicles down on the approaches to the refuge islands?

Multi Choice No

Q13 Overall, do you support the Ferry Road pedestrian improvements?

Multi Choice Somewhat

Q14 Is there anything else we need to know before progressing these plans?

Long Text

Q2 First Name

Short Text Jay

Q3 Last Name

Short Text Price

Q4 Name of organisation/business

Short Text

Q5 Your role

Short Text

Q10 What do you like about the plan and why?

Long Text I don't

Q11 What don't you like about the plan and why?

Long Text Putting speed bumps everywhere doesn't fix anything. It also just slows down all emergency services. Also damages all cars suspension costs every one extra money

Q12 Do you support the use of speed humps to slow vehicles down on the approaches to the refuge islands?

Multi Choice No

Q13 Overall, do you support the Ferry Road pedestrian improvements?

Multi Choice No

Q14 Is there anything else we need to know before progressing these plans?

Long Text Stop putting speed bumps everywhere and look at other ways to protect pedestrians

Q2 First Name

Short Text Megan

Q3 Last Name

Short Text Colmore

Q4 Name of organisation/business

Short Text

Q5 Your role

Short Text

Q10 What do you like about the plan and why?

Long Text Pedestrian crossing is a good idea, but not four!

Q11 What don't you like about the plan and why?

Long Text The speed bumps!! Use traffic lights or zebra crossings

Q12 Do you support the use of speed humps to slow vehicles down on the approaches to the refuge islands?

Multi Choice No

Q13 Overall, do you support the Ferry Road pedestrian improvements?

Multi Choice No

Q14 Is there anything else we need to know before progressing these plans?

Long Text Stop putting speed bumps everywhere!!

Q2 First Name

Short Text Michael

Q3 Last Name

Short Text Crabtree

Q4 Name of organisation/business

Short Text

Q5 Your role

Short Text

Q10 What do you like about the plan and why?

Long Text Safe crossing areas identified by data

Q11 What don't you like about the plan and why?

Long Text Too many crossings in a short space, too expensive to construct, no need for 4 crossings on data shown.
A map showing all 4 crossings on the stretch of Ferry road would highlight too many crossings

Q12 Do you support the use of speed humps to slow vehicles down on the approaches to the refuge islands?

Multi Choice Yes

Q13 Overall, do you support the Ferry Road pedestrian improvements?

Multi Choice No

Q14 Is there anything else we need to know before progressing these plans?

Long Text Would create too much vehicle congestion in such a short area

Q2 First Name

Short Text Tenisia

Q3 Last Name

Short Text Williams

Q4 Name of organisation/business

Short Text

Q5 Your role

Short Text

Q10 What do you like about the plan and why?

Long Text I don't like anything about the plan

Q11 What don't you like about the plan and why?

Long Text Ferry Road is congested enough in peak hour traffic

Q12 Do you support the use of speed humps to slow vehicles down on the approaches to the refuge islands?

Multi Choice No

Q13 Overall, do you support the Ferry Road pedestrian improvements?

Multi Choice No

Q14 Is there anything else we need to know before progressing these plans?

Long Text

Q2 First Name

Short Text Thomas

Q3 Last Name

Short Text Wilkinson

Q4 Name of organisation/business

Short Text

Q5 Your role

Short Text

Q10 What do you like about the plan and why?

Long Text

Q11 What don't you like about the plan and why?

Long Text I don't think adding speed humps is the right way to go about it, better signage, road mark the road better and drop the speed limit through that section of road

Q12 Do you support the use of speed humps to slow vehicles down on the approaches to the refuge islands?

Multi Choice No

Q13 Overall, do you support the Ferry Road pedestrian improvements?

Multi Choice Somewhat

Q14 Is there anything else we need to know before progressing these plans?

Long Text Get the community feed back and don't just go ahead and add speed humps

Q2 First Name

Short Text John

Q3 Last Name

Short Text Germain

Q4 Name of organisation/business

Short Text

Q5 Your role

Short Text

Q10 What do you like about the plan and why?

Long Text Nothing

Q11 What don't you like about the plan and why?

Long Text I don't think it's necessary. People can already cross safely.
No more speed bumps!!!! Creates huge congestion and problems. How many people have actually been hit in these areas?

Q12 Do you support the use of speed humps to slow vehicles down on the approaches to the refuge islands?

Multi Choice No

Q13 Overall, do you support the Ferry Road pedestrian improvements?

Multi Choice No

Q14 Is there anything else we need to know before progressing these plans?

Long Text Waste of rate payers money.

Q2 First Name

Short Text Harrison

Q3 Last Name

Short Text McEvoy

Q4 Name of organisation/business

Short Text

Q5 Your role

Short Text

Q10 What do you like about the plan and why?

Long Text It is good to include more crossings, and the speed bumps are a proven way to reduce crashes and incidents, while not getting in the way of vehicles.

Q11 What don't you like about the plan and why?

Long Text Nothing

Q12 Do you support the use of speed humps to slow vehicles down on the approaches to the refuge islands?

Multi Choice Yes

Q13 Overall, do you support the Ferry Road pedestrian improvements?

Multi Choice Yes

Q14 Is there anything else we need to know before progressing these plans?

Long Text

Q2 First Name

Short Text Marie

Q3 Last Name

Short Text Byrne

Q4 Name of organisation/business

Short Text

Q5 Your role

Short Text

Q10 What do you like about the plan and why?

Long Text Safe crossing points on Ferry Road are essential. It's such a busy road and people need to be able to cross safely and potentially have refuges to wait safely. Wheelchair users, mobility scooter users, mobility walker users and parents with prams need to be able to get across safely and struggle to do so. I've spent time in a wheelchair and tried to cross using it. It was impossible to wait in the existing pedestrian island. I've seen people in wheelchairs having to stop traffic to get across safely (photo evidence supplied)

Q11 What don't you like about the plan and why?

Long Text It's taken too long to get to this stage. Over five years is too long to wait after a pedestrian fatality (See attached photo).
It keeps the joint use of the footpath for car parking.

Q12 Do you support the use of speed humps to slow vehicles down on the approaches to the refuge islands?

Multi Choice Yes

Q13 Overall, do you support the Ferry Road pedestrian improvements?

Multi Choice Yes

Q14 Is there anything else we need to know before progressing these plans?

Long Text If there is a way of doing the pedestrian crossings without the humps, I'd like that to be a potential option. I'd hate for a backlash against speed humps stop the installation of the pedestrian refuge islands.
If there is a way of removing the car parking on the footpaths as well that would be great. That's one reason why it's hard for people in wheelchairs, using prams, walkers etc to get across the road. The kerbing keeps breaking up due to the vehicle use across the footpath - making it dangerous if a wheel hits a broken piece of road/footpath. See photo evidence

Q2 First Name

Short Text Bridget

Q3 Last Name

Short Text Malcolm

Q4 Name of organisation/business

Short Text

Q5 Your role

Short Text

Q10 What do you like about the plan and why?

Long Text There are often people crossing along ferry road and it can be nerve wracking as a driver knowing if they are about to step out in front of you or not. The slower speeds will help. Bikers also sometimes zip across in front of cars to cross the the median so these crossing points may make it easier and safer for them to cross. It makes sense slowing speeds near the bus stops also as this is a popular crossing point

Q11 What don't you like about the plan and why?

Long Text I think they're good as long as they don't create confusion about whether or not it's a pedestrian crossing- I.e needs to be clear who has right of way

Q12 Do you support the use of speed humps to slow vehicles down on the approaches to the refuge islands?

Multi Choice Yes

Q13 Overall, do you support the Ferry Road pedestrian improvements?

Multi Choice Yes

Q14 Is there anything else we need to know before progressing these plans?

Long Text

Q2 First Name

Short Text Amy

Q3 Last Name

Short Text Young

Q4 Name of organisation/business

Short Text

Q5 Your role

Short Text

Q10 What do you like about the plan and why?

Long Text It is great that some focus has been brought back to Derry Road safety. I have been actively engaged with this process for over 10 years and for the most part, Ferry Road has remained unchanged.

Q11 What don't you like about the plan and why?

Long Text Speed bumps on Ferry Road. The existing ones at the intersection of Aldwins is terrible. Motorists going straight accelerate to make it through the intersection on a Green then brake at the speed bump. Traffic backs up in the intersection. Additionally, I'm seeing right turning traffic now turning in front of briefly slowed oncoming traffic, narrowly missing cyclists and the oncoming vehicle as they accelerate after the speed bump. They have genuinely made this intersection less safe. Just consider a right turning arrow!

Q12 Do you support the use of speed humps to slow vehicles down on the approaches to the refuge islands?

Multi Choice No

Q13 Overall, do you support the Ferry Road pedestrian improvements?

Multi Choice Somewhat

Q14 Is there anything else we need to know before progressing these plans?

Long Text Ferry Road is a necessarily unpleasant road to walk, drive or bike. Separate the footpath from the road. Ever tried walking down there with a dog, pram, small children or all of the above? Perhaps see about winding the footpath inside Edmonds Gardens in order to extend to two Eastbound lanes at Ensors then pedestrians actually have a nice experience. Spend some time in Peak traffic observing the speed bumps on Ferry Ensors to understand why they aren't working with the current traffic light sequence.

There remains ambiguity and safety concerns regarding cyclists continuing East on Ferry Road from the Nursery Road, Wilsons Road cypeway departure. Still no signage or visibility enhancements for the road users and residents along what is supposedly road but is also residents' access to their properties along this stretch. I'm coming home to 227 Ferry Road after school and kindy pickups, turning into oncoming cyclists flying through what they think is a cypeway on which they have right of way. It is extremely stressful and we suffer daily abuse from cyclists not understanding that it is how we get to our driveways. We've had council and engineers look into this and be horrified. Nothing has been done and it is a miracle nobody has been injured or killed yet. Thanks for your consideration. If this reaches anyone and something is done, I want to know your name because you'll have done more than what anybody else has achieved in the 16 years we've been trying to have this resolved.

Q2 First Name

Short Text Shauna

Q3 Last Name

Short Text synnott

Q4 Name of organisation/business

Short Text

Q5 Your role

Short Text

Q10 What do you like about the plan and why?

Long Text Pedestrians definitely need a safer space to cross the road and they are in a good location

Q11 What don't you like about the plan and why?

Long Text The cost, hopefully (as other projects seem to cost a crazy amount of money to install) isn't too much for a simple fix for the area.

Q12 Do you support the use of speed humps to slow vehicles down on the approaches to the refuge islands?

Multi Choice Don't know/not sure

Q13 Overall, do you support the Ferry Road pedestrian improvements?

Multi Choice Somewhat

Q14 Is there anything else we need to know before progressing these plans?

Long Text

Q2 First Name

Short Text Grace

Q3 Last Name

Short Text Lynskey

Q4 Name of organisation/business

Short Text

Q5 Your role

Short Text

Q10 What do you like about the plan and why?

Long Text I like the speed bump and islands, it's much easier to cross with islands in the middle

Q11 What don't you like about the plan and why?

Long Text

Q12 Do you support the use of speed humps to slow vehicles down on the approaches to the refuge islands?

Multi Choice Yes

Q13 Overall, do you support the Ferry Road pedestrian improvements?

Multi Choice Yes

Q14 Is there anything else we need to know before progressing these plans?

Long Text I hope they have lighting specifically over them, some people dress like ninjas and think cars can still see them

Q2 First Name

Short Text Angelina

Q3 Last Name

Short Text Craven

Q4 Name of organisation/business

Short Text

Q5 Your role

Short Text

Q10 What do you like about the plan and why?

Long Text I do not like this plan!

Q11 What don't you like about the plan and why?

Long Text I think this plan is absolute rubbish!! Putting speed humps in here is about as ridiculous as putting the speed humps down at the Ferry/Aldwins/Ensors Rd intersection (where you were told by the locals not to do it, that this was a stupid thing to do, clearly now proving its point!). The bumps further down the road have caused this congestion up near Mathesons because traffic can no longer flow properly through the Aldwins/Ensors intersection. I have witnessed this at different times of the day when traffic used to flow smoothly before those bumps were in.

Q12 Do you support the use of speed humps to slow vehicles down on the approaches to the refuge islands?

Multi Choice No

Q13 Overall, do you support the Ferry Road pedestrian improvements?

Multi Choice No

Q14 Is there anything else we need to know before progressing these plans?

Long Text What does make things difficult here is the merging of the two lanes to one and people then slowing down suddenly to turn into Mathesons Rd. THIS is what causes incidents. Going from two lanes to one and then speed bumps is a recipe for disaster!
You can't stop people from being stupid at crossing the road. They cross wherever they like and more likely than not, won't even use any pedestrian crossing if you put it in there.
Please listen to the locals who use this road frequently. We're sick of our rates being wasted on things we don't want! And what about emergency services?! They don't want them either!

Q2 First Name

Short Text Jaimi

Q3 Last Name

Short Text Cameron

Q4 Name of organisation/business

Short Text

Q5 Your role

Short Text

Q10 What do you like about the plan and why?

Long Text I dont like it one bit

Q11 What don't you like about the plan and why?

Long Text Its congested enough down there with the stupid road humps, adding more is going to back right up and make more dangerous as everyone be in a hurry.

Q12 Do you support the use of speed humps to slow vehicles down on the approaches to the refuge islands?

Multi Choice No

Q13 Overall, do you support the Ferry Road pedestrian improvements?

Multi Choice No

Q14 Is there anything else we need to know before progressing these plans?

Long Text No more road humps

Q2 First Name

Short Text Sean

Q3 Last Name

Short Text van Schouten

Q4 Name of organisation/business

Short Text

Q5 Your role

Short Text

Q10 What do you like about the plan and why?

Long Text Although I do not walk around this area, I acknowledge the need for pedestrian crossings across this portion of Ferry road as I do cycle and drive along here regularly and see people cross the road using the median strips or raised islands. Purpose-built pedestrian islands are a great way to facilitate road crossings without physically stopping vehicle traffic - I make use of them in other parts of town when I am walking.

Q11 What don't you like about the plan and why?

Long Text Multiple raised traffic humps on a key road. I believe the islands alone provide sufficient aid to pedestrians needing to cross Ferry Road. I do realise that the speed humps will tend to make vehicles slow down, however I question whether this outcome considers what affect the speed humps may have on a wider scale as it will naturally disrupt traffic negatively, regardless of the time of day.

Q12 Do you support the use of speed humps to slow vehicles down on the approaches to the refuge islands?

Multi Choice No

Q13 Overall, do you support the Ferry Road pedestrian improvements?

Multi Choice Yes

Q14 Is there anything else we need to know before progressing these plans?

Long Text I hold the believe that a good proportion of pedestrian-vehicle accidents along this area have ocured due to pedestrians trying to cross the road quickly in order to avoid standing in the median strip which is used by turning vehicles, and that providing a safe space in the middle of the road will allow people to cross without the anxiety of having to stand in an active part of the road while waiting for a sufficient gap in traffic.

The potential for traffic to come to a halt 'upstream' can create dangerous situations for cyclists as the cycle lane will likely have moving cyclists along a line of stationery cars, which can create dangerous areas with vehicles turning through gaps stationery traffic without taking into account the active cycle lane. Although this currently occurs every weekday, it could make this problem worse.

Q2 First Name

Short Text Robbie

Q3 Last Name

Short Text Averill

Q4 Name of organisation/business

Short Text

Q5 Your role

Short Text

Q10 What do you like about the plan and why?

Long Text Pedestrian crossings are a good idea

Q11 What don't you like about the plan and why?

Long Text Speed bumps- the ones you've installed on the exit of intersections are a real hazard. Drivers don't expect them, and they often almost cause a bunch of cars to rear end each other. Having speed bumps on the entry to an intersection is weird enough but understandable. Just don't do it any more on the exit- you will cause more accidents. I am a cyclist and often have people swerving left into my cycle lane when they realise there is a speed bump after the intersection.

Q12 Do you support the use of speed humps to slow vehicles down on the approaches to the refuge islands?

Multi Choice No

Q13 Overall, do you support the Ferry Road pedestrian improvements?

Multi Choice Somewhat

Q14 Is there anything else we need to know before progressing these plans?

Long Text

Q2 First Name

Short Text Rosie

Q3 Last Name

Short Text Grant

Q4 Name of organisation/business

Short Text

Q5 Your role

Short Text

Q10 What do you like about the plan and why?

Long Text

Q11 What don't you like about the plan and why?

Long Text I'm not sure if the safety of cyclists has been considered in this. This is very important to me.

Q12 Do you support the use of speed humps to slow vehicles down on the approaches to the refuge islands?

Multi Choice

Q13 Overall, do you support the Ferry Road pedestrian improvements?

Multi Choice Don't know / Not sure

Q14 Is there anything else we need to know before progressing these plans?

Long Text Please make sure this won't be unsafe for cyclists e.g. if cars get backed up, they can usher other drivers through queues of cars to turn into a side street and often don't check for cyclists before doing so.

Q2 First Name

Short Text Kara

Q3 Last Name

Short Text Scherer

Q4 Name of organisation/business

Short Text

Q5 Your role

Short Text

Q10 What do you like about the plan and why?

Long Text Great that attention is being paid to Ferry Road as it is a major road used by many in the eastern suburbs. Pedestrian safety is also important.

Q11 What don't you like about the plan and why?

Long Text As you probably noticed in your camera tracking, Ferry Road is incredibly congested and experiences traffic back ups many times of the day, on weekdays and weekends. Although pedestrian safety is important, adding more speed bumps to this road is not the answer. Please give us some other options to consider. I would imagine that first focusing efforts on making the road less congested like adding a bus lane to encourage public transit and take some cars off the road would also be a way to increase pedestrian safety - the traffic is the problem, and speed bumps will only cause more traffic jams and frustrated drivers.

Q12 Do you support the use of speed humps to slow vehicles down on the approaches to the refuge islands?

Multi Choice No

Q13 Overall, do you support the Ferry Road pedestrian improvements?

Multi Choice No

Q14 Is there anything else we need to know before progressing these plans?

Long Text Thank you for investing in Ferry Road. Please come up with another plan to present to us, speed bumps are not the answer. The new speed platforms on Ferry and Ensors has make traffic worse and (anecdotaly) made drivers frustrated, making poor decisions. We need improved roads, infrastructure, and public transport, not just more speed bumps.

Q2 First Name

Short Text Heather

Q3 Last Name

Short Text Grant

Q4 Name of organisation/business

Short Text

Q5 Your role

Short Text

Q10 What do you like about the plan and why?

Long Text Installing a pedestrian refuge may be sensible, but the effectiveness of speed humps in addressing this particular challenge is highly questionable.

Q11 What don't you like about the plan and why?

Long Text strongly oppose the installation of speed humps as proposed. While improving pedestrian safety is important, speed humps are a blunt and unnecessary measure that worsens existing issues on Ferry Road. Traffic congestion is already a serious problem in this area, and the addition of speed humps will only increase travel delays, vehicle emissions, and driver frustration.

I also question the basis of the data informing this proposal. The area often sees unpredictable foot traffic from vulnerable individuals, including homeless people and those affected by drug use, who are unlikely to adhere to designated pedestrian crossings. Installing a pedestrian refuge may be sensible, but the effectiveness of speed humps in addressing this particular challenge is highly questionable.

I urge the Council to reconsider this approach and instead explore smarter, less disruptive solutions that balance road safety with traffic efficiency.

Q12 Do you support the use of speed humps to slow vehicles down on the approaches to the refuge islands?

Multi Choice No

Q13 Overall, do you support the Ferry Road pedestrian improvements?

Multi Choice Don't know / Not sure

Q14 Is there anything else we need to know before progressing these plans?

Long Text I also question the basis of the data informing this proposal. The area often sees unpredictable foot traffic from vulnerable individuals, including homeless people and those affected by drug use, who are unlikely to adhere to designated pedestrian crossings. Installing a pedestrian refuge may be sensible, but the effectiveness of speed humps in addressing this particular challenge is highly questionable.

I urge the Council to reconsider this approach and instead explore smarter, less disruptive solutions that balance road safety with traffic efficiency.

Q2 First Name

Short Text Avnish

Q3 Last Name

Short Text Goyani

Q4 Name of organisation/business

Short Text

Q5 Your role

Short Text

Q10 What do you like about the plan and why?

Long Text Yes to more speed bumps!!

Since the huge queues caused by the raised islands at Aldwins Rd I have witnessed several near misses with cars trying to turn in and out of side streets through stationery queues of cars which have no chance seeing cyclists in the cycle lane.

Q11 What don't you like about the plan and why?

Long Text

Q12 Do you support the use of speed humps to slow vehicles down on the approaches to the refuge islands?

Multi Choice Yes

Q13 Overall, do you support the Ferry Road pedestrian improvements?

Multi Choice Yes

Q14 Is there anything else we need to know before progressing these plans?

Long Text

Q2 First Name

Short Text Marcel

Q3 Last Name

Short Text Peek

Q4 Name of organisation/business

Short Text

Q5 Your role

Short Text

Q10 What do you like about the plan and why?

Long Text I think the islands in the middle of the road for pedestrians is a good idea, giving them a safe place to cross.

Q11 What don't you like about the plan and why?

Long Text I think adding four sets of speedbumps is a bad idea, Ferry Road is a main artery into and out of the city. This is just going to slow travel times down even more, make drivers more frustrated and angry, and more likely to make poor decisions. (ie driving too fast over the speed bumps, making them a hazard).

Q12 Do you support the use of speed humps to slow vehicles down on the approaches to the refuge islands?

Multi Choice No

Q13 Overall, do you support the Ferry Road pedestrian improvements?

Multi Choice Somewhat

Q14 Is there anything else we need to know before progressing these plans?

Long Text

Q2 First Name

Short Text Allan

Q3 Last Name

Short Text Bain

Q4 Name of organisation/business

Short Text

Q5 Your role

Short Text

Q10 What do you like about the plan and why?

Long Text Burns more fuel.
Go for traffic islands they do work but with no bumps

Q11 What don't you like about the plan and why?

Long Text If the council is anti green go for the bumps.
If we think green the use of speed bumps are certainly fuel users both busses and cars.
If the council has a go for pollution go for the bumps.
Tennison St is a mess

Q12 Do you support the use of speed humps to slow vehicles down on the approaches to the refuge islands?

Multi Choice Don't know/not sure

Q13 Overall, do you support the Ferry Road pedestrian improvements?

Multi Choice No

Q14 Is there anything else we need to know before progressing these plans?

Long Text Having been involved with the CCC traffic plans before I have wasted my time again.

Q2 First Name

Short Text Anna

Q3 Last Name

Short Text Barber

Q4 Name of organisation/business

Short Text

Q5 Your role

Short Text

Q10 What do you like about the plan and why?

Long Text Refuge points are good

Q11 What don't you like about the plan and why?

Long Text Speed humps totally unnecessary wreck pur cars wreck our backs and create congestion

Q12 Do you support the use of speed humps to slow vehicles down on the approaches to the refuge islands?

Multi Choice No

Q13 Overall, do you support the Ferry Road pedestrian improvements?

Multi Choice Somewhat

Q14 Is there anything else we need to know before progressing these plans?

Long Text

Q2 First Name

Short Text David

Q3 Last Name

Short Text Palmer

Q4 Name of organisation/business

Short Text

Q5 Your role

Short Text

Q10 What do you like about the plan and why?

Long Text My comments are in the attached PDF file.

Q11 What don't you like about the plan and why?

Long Text

Q12 Do you support the use of speed humps to slow vehicles down on the approaches to the refuge islands?

Multi Choice Yes

Q13 Overall, do you support the Ferry Road pedestrian improvements?

Multi Choice Yes

Q14 Is there anything else we need to know before progressing these plans?

Long Text

Ferry Road pedestrian improvements

Submission by David Palmer - May 2025

Kia ora,

Overall, I am very supportive of these proposed improvements. I have found myself walking on this part of Ferry Road many times recently, and the current design is well below the standard I would consider safe and accessible for pedestrians. The proposed improvements will greatly improve the accessibility of the area for pedestrians and cyclists alike.

Below, I have included feedback on specific elements of the design that I feel need to be adjusted. I specifically use the Barbour intersection a lot, so I have confined my detailed feedback comments to that intersection, but I generally support the proposed improvements at the other crossing points as well.

Matheson / Barbour / Ferry intersection

I frequently arrive in this area by bus and need to cross the road near Barbour Street, either to access offices, shops or the Phillipstown Community Hub.

The key changes to this proposal that I recommend making are:

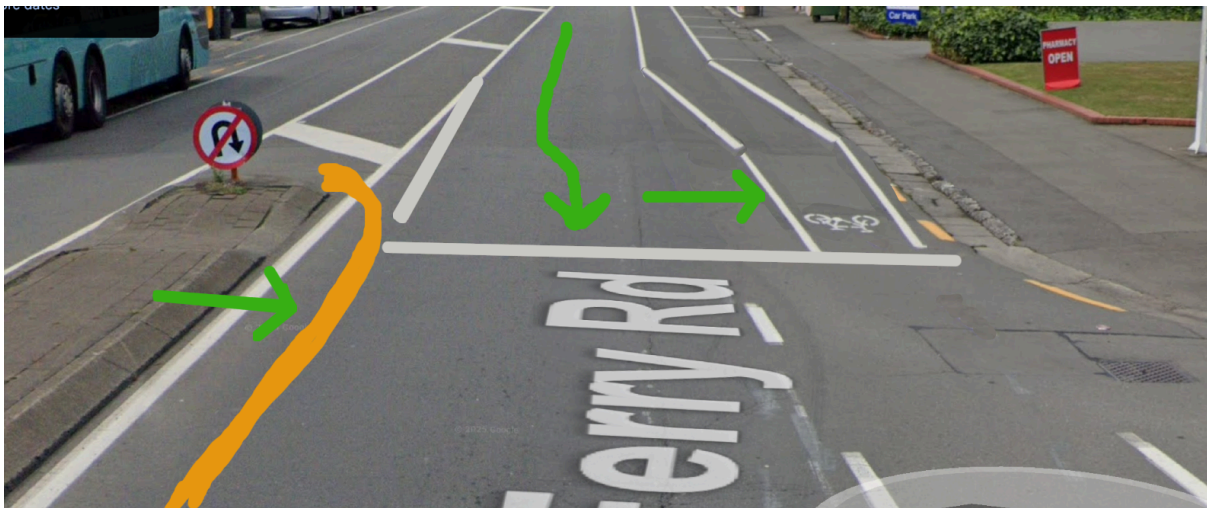
- Improving the bus stop on the north side of Ferry Road, with a raised kerb
- Upgrade the crossing on Ferry Road to be a zebra crossing
- Widen the median refuge by realigning the cycleway further south
- Install a speed bump on Barbour Street

The bus stop on the north side of Ferry Road is currently in a very poor state of repair. A large pothole has formed, and the road surface is extensively cracked. I have also found that the step-down from the bus is quite high, because the kerb is here is very low, close to the grade of the road. For that reason, **I would like to see this work include a raised and reinforced kerb installed** to make getting into and out of buses more accessible, particularly for those with mobility issues. Funding has been made available in the Long Term Plan (as part of the PT Futures programme) for bus stop upgrades,

and that work should be conducted alongside the improvements proposed here to minimise the disruption from roadworks.

I support the installation of the central pedestrian refuge. Ferry Road is quite busy, with a near continuous stream of cars at peak time. This means there are limited opportunities for a pedestrian to safely cross both lanes in one go, so the pedestrian refuge is crucial for making the crossing accessible and useful. For the same reason, **I strongly support a zebra crossing at this location**, as it triggers drivers to stop and give way to pedestrians. I understand that staff do not like installing zebra crossings as they think that drivers do not comply with them. However, I disagree with this assessment. Even if some drivers ignore zebra crossings, in my experience most of them do slow down and stop. Additionally, it only takes one driver to notice a pedestrian and stop, as they will hold back the traffic behind them. This is a better safety outcome for pedestrians, as stopped cars are always safer than moving cars.

The current refuge (if it can be called that) is far too small to be safe. I am concerned that the proposed refuge is also going to be too small. **I would therefore like to see the median refuge be widened.** Space can be created for this by moving the cycle lane on the south side of the road to align closer to the kerb. This can be done due to the proposed no-stopping restriction. There is currently a foot-wide strip of unused road surface in the proposed design, between the cycle lane and the gutter. Realigning the cycle lane would allow the carriageway lane to be realigned slightly further south, and for the refuge island to be widened. A wider refuge would allow people with bicycles and scooters to safely use the crossing.



This rough diagram shows my proposed change. By pushing the cycleway closer to the gutter, the carriageway can be realigned to the south, allowing the central refuge to be widened.

I understand the rationale for installing speed bumps on Ferry Road, and have been very impressed by the safety improvements they have provided in other parts of the city. However, **I disagree with using speed bumps in this case.** I note that there is no recent traffic count data in this area on the CCC website. However, anecdotally, I have not witnessed cars travelling at excessive speed in this area generally; I would estimate that most cars are travelling at or around the 50km/h speed limit. Speed bumps reduce the median speed at which vehicles travel through an area. We must ask ourselves, what is the problem we are trying to solve here? The answer is improving pedestrian safety. A moving car is always more dangerous to a pedestrian than a stationary car. In my view, a zebra crossing would mitigate this risk for pedestrians better than speed bumps, **by stopping traffic entirely**, at the time when a pedestrian is crossing the road.

However, to be clear, if this is not changed to a design including a zebra crossing, then I fully support the introduction of speed bumps on Ferry Road at the crossings, to ensure that vehicles reduce their speed when approaching the crossing. I would further support widening the speed bumps to create a raised crossing, with pedestrians walking across the top of a speed table.

I would like to see yellow leaner staples installed on at least the east side of the pedestrian refuge, and at the pedestrian waiting area on the south side of the crossing. These make the crossing more visually obvious to drivers, provides a bit of cover to waiting pedestrians, and can act as a hand-rail to give pedestrians with mobility needs more support while they are waiting for a gap in the traffic.

I strongly support the kerb buildout on Barbour Street. In my experience, cars make the left-hand turn from Ferry Road into Barbour Street at a speed that is far too high to be safe for pedestrians. Introducing a kerb build-out tightens the radius of the turn, encouraging drivers to make the turn at a safer speed.

I strongly support the no-stopping markings on Ferry Road to the east of Barbour Street, as they will hugely enhance pedestrian visibility. Drivers often indicate quite late before making the left-turn onto Barbour Street, and parked cars on Ferry Road often block the pedestrians' view of the indicator lights of turning cars. This makes it difficult for a pedestrian to tell if it is safe to cross Barbour Street. If car drivers are able to see a pedestrian waiting, they are more likely to indicate early. Additionally, having no cars parked in the way will make the indicator lights more visible to pedestrians, increasing their safety.

The current on-street car parking in this area, including outside the pharmacy, has a really quite bizarre design. The car park straddles the gutter, meaning that parked cars are not well separated from the footpath, and in fact are essentially parked on the footpath. Removing on-street carparking in this area will free space on the footpath for pedestrians and reduce the risk of a collision with an opening car door for cyclists. It also potentially creates road space that could be used for widening the refuge island, as mentioned earlier. The removal of the car parks will have a negligible impact on the surrounding businesses, as most of them have ample off-street parking that is rarely at capacity.

I would like to see a raised crossing installed across Barbour Street where it intersects with Ferry Road. Frequently when crossing this intersection I have had cars approach at high speed, which does not feel safe as a pedestrian. I would also like to see the no-stopping restriction extended further south on the west-side of Barbour Street. When cars are parked in that area, it significantly reduces visibility for pedestrians preparing to cross Barbour Street. If the crossing on Ferry Road is changed to be a zebra crossing, the speed bumps on Ferry Road could be removed, and the budget reallocated to speed bumps on Barbour Street.

Thank you for undertaking these proposed changes, and thank you for the chance to provide feedback on this excellent plan. I would like to speak to my submission if there are any hearings on this proposal.

Q2 First Name

Short Text Shaun

Q3 Last Name

Short Text Bosher

Q4 Name of organisation/business

Short Text

Q5 Your role

Short Text

Q10 What do you like about the plan and why?

Long Text I like that you are providing better facilities for pedestrians as it's very busy with people streaming across the road. I like that you are slowing cars down as well

Q11 What don't you like about the plan and why?

Long Text I'm not sure why you aren't using raised crossing platforms than speed humps. Or is it because the government won't let you? Raised platforms would be a lot better

Q12 Do you support the use of speed humps to slow vehicles down on the approaches to the refuge islands?

Multi Choice Yes

Q13 Overall, do you support the Ferry Road pedestrian improvements?

Multi Choice Yes

Q14 Is there anything else we need to know before progressing these plans?

Long Text I just moved from Sullivan Ave, so used to drive this route often and peds crossing at random places was an issue.

That said, installing these won't make people use them, so it won't solve all the problems no doubt. You can lead a horse to water.....

Q2 First Name

Short Text
Tori

Q3 Last Name

Short Text
Ballantine

Q4 Name of organisation/business

Short Text

Q5 Your role

Short Text

Q10 What do you like about the plan and why?

Long Text
Nothing the council are deluded in their idea off the city, put your speed platforms on the other side of town stop wrecking our streets

Q11 What don't you like about the plan and why?

Long Text
Its just going to cause even more congestion and headaches for us residents and road users

Q12 Do you support the use of speed humps to slow vehicles down on the approaches to the refuge islands?

Multi Choice
No

Q13 Overall, do you support the Ferry Road pedestrian improvements?

Multi Choice
No

Q14 Is there anything else we need to know before progressing these plans?

Long Text
Make the traffic flow freely then there wouldn't be such a backlog and people wouldn't make dangerous decisions to get to their destination

Q2 First Name

Short Text David

Q3 Last Name

Short Text Thomson

Q4 Name of organisation/business

Short Text

Q5 Your role

Short Text

Q10 What do you like about the plan and why?

Long Text Pedestrian refuge islands. These would improve safety without negatively impacting the traffic slow.

Q11 What don't you like about the plan and why?

Long Text Speed Humps. Ferry road is a busy road link and due to the number of vehicles that use it speed humps are not appropriate here. They would have a large negative impact on the traffic flow, which will compound when the road is busy causing delays and driver frustration. Safety can be improved by other means, without disrupting traffic so much on a main road.

Q12 Do you support the use of speed humps to slow vehicles down on the approaches to the refuge islands?

Multi Choice No

Q13 Overall, do you support the Ferry Road pedestrian improvements?

Multi Choice No

Q14 Is there anything else we need to know before progressing these plans?

Long Text The plans would be reasonable, if it wasn't for the speed humps.

Q2 First Name

Short Text Jessica

Q3 Last Name

Short Text Taylor

Q4 Name of organisation/business

Short Text

Q5 Your role

Short Text

Q10 What do you like about the plan and why?

Long Text Pedestrian crossings.

Q11 What don't you like about the plan and why?

Long Text Raised pedestrian crossings that slow down traffic.

Q12 Do you support the use of speed humps to slow vehicles down on the approaches to the refuge islands?

Multi Choice No

Q13 Overall, do you support the Ferry Road pedestrian improvements?

Multi Choice Somewhat

Q14 Is there anything else we need to know before progressing these plans?

Long Text People do need a place to cross safely. But people also need to learn patience. Drivers and pedestrians. A zebra crossing is all that is required. Not raised. This is a main thoroughfare for many trucks, carrying loads, buses & as it is, gets extremely backed up at the slightest sight of peak hours. This will slow it down more. Educate on patience instead of trying to dumb everything down so much.

Q2 First Name

Short Text chris

Q3 Last Name

Short Text abbott

Q4 Name of organisation/business

Short Text

Q5 Your role

Short Text

Q10 What do you like about the plan and why?

Long Text
pls include some names of firms occupying the site.
These are what I notice when I travel past, not the street numbers

Q11 What don't you like about the plan and why?

Long Text
at first glance it looks great

Q12 Do you support the use of speed humps to slow vehicles down on the approaches to the refuge islands?

Multi Choice
Yes

Q13 Overall, do you support the Ferry Road pedestrian improvements?

Multi Choice
No

Q14 Is there anything else we need to know before progressing these plans?

Long Text

Q2 First Name

Short Text Patrick

Q3 Last Name

Short Text Kennedy

Q4 Name of organisation/business

Short Text

Q5 Your role

Short Text

Q10 What do you like about the plan and why?

Long Text
As mentioned, there is no place to safely cross Ferry Road, which effectively acts as a wall between the neighbourhoods on either side.
I like the speed humps, as we all know that speed limit signs are routinely ignored, so forcing people to slow down with humps is a far superior solution.
I like the no-stopping areas around the crossings to make it easier for pedestrians (especially children) to see and be seen without being blocked by a truck.

Q11 What don't you like about the plan and why?

Long Text
I'd prefer pedestrian crossings, but I understand that the cost of these would be much higher. As the built environment changes in this area to higher density, with more people on foot, hopefully these crossings can be upgraded.

Q12 Do you support the use of speed humps to slow vehicles down on the approaches to the refuge islands?

Multi Choice Yes

Q13 Overall, do you support the Ferry Road pedestrian improvements?

Multi Choice Yes

Q14 Is there anything else we need to know before progressing these plans?

Long Text

Q2 First Name

Short Text Cynthia

Q3 Last Name

Short Text Johnson

Q4 Name of organisation/business

Short Text

Q5 Your role

Short Text

Q10 What do you like about the plan and why?

Long Text I hate everything about it.

Q11 What don't you like about the plan and why?

Long Text It's bad enough trying to drive down Ferry Road towards Woolston without putting anymore of those idiotic speed bumps in. Getting down Ferry Road is a bloody nightmare since the new speed bumps have been put in. And to the person who thought of this stupid idea all I can say is you need to find another job.

Q12 Do you support the use of speed humps to slow vehicles down on the approaches to the refuge islands?

Multi Choice No

Q13 Overall, do you support the Ferry Road pedestrian improvements?

Multi Choice No

Q14 Is there anything else we need to know before progressing these plans?

Long Text Stop wasting us ratepayer's money on these idiotic ideas. Deal with issues that matter.

Q2 First Name

Short Text Karl

Q3 Last Name

Short Text Russell

Q4 Name of organisation/business

Short Text

Q5 Your role

Short Text

Q10 What do you like about the plan and why?

Long Text a crossing is needed, not 4. put the crossing in where the medical center and 24 hour bakery is. that will be enough.

Q11 What don't you like about the plan and why?

Long Text 4 is too many

Q12 Do you support the use of speed humps to slow vehicles down on the approaches to the refuge islands?

Multi Choice No

Q13 Overall, do you support the Ferry Road pedestrian improvements?

Multi Choice Somewhat

Q14 Is there anything else we need to know before progressing these plans?

Long Text
fix the underground infrastructure first. the road has been opened twice recently to fix the stormwater... and still not fixed.
also the driveway outside my house is dangerous turning left.

the speed humps at the ensors/ ferry road intersection that was just installed is enough to slow the traffic, and drivers are courteous along this stretch of road.

the speed hump as you are leaving the intersection on ferry road heading towards Woolston is the dumbest thing i have ever seen... again it keeps the traffic slow, but makes it harder for traffic wanting to turn right onto Aldwins road for school student drop off, coming the other way!

Q2 First Name

Short Text Anne

Q3 Last Name

Short Text Heins

Q4 Name of organisation/business

Short Text

Q5 Your role

Short Text

Q10 What do you like about the plan and why?

Long Text I like that crossing Ferry Rd will be easier and safer! I was actually stuck here trying to get across near Bordesley St just the other evening and it was quite stressful even at 7pm at night, and hate to think what it would be like if you had a child, children's buggy or a wheelchair to navigate, or if it was peak hour traffic. I also think the speed humps are a good idea - they generally seem effective at slowing traffic, and I think that's why they evoke strong reactions from some people - because unlike a sign telling you slow down, you can't ignore them as easily.
I also like that the cycle lanes will be highlighted with the green paint - Ferry Road can be quite full on to cycle down.

Q11 What don't you like about the plan and why?

Long Text I can't really comment on the detail as I live further down Ferry Rd, so I'm not super familiar with this area and how residents use it.

Q12 Do you support the use of speed humps to slow vehicles down on the approaches to the refuge islands?

Multi Choice Yes

Q13 Overall, do you support the Ferry Road pedestrian improvements?

Multi Choice Yes

Q14 Is there anything else we need to know before progressing these plans?

Long Text Thanks for making this area safer to cross, and safer to cycle down.

Q2 First Name

Short Text Matthew

Q3 Last Name

Short Text Dauwalder

Q4 Name of organisation/business

Short Text

Q5 Your role

Short Text

Q10 What do you like about the plan and why?

Long Text I like nothing about the plan.

Q11 What don't you like about the plan and why?

Long Text I'm sick of the council making it unpleasurable to drive around Christchurch with the constant building of speed humps and lowering speed limits in an attempt to make people use their undesirable public transport. It's a waste of money and foolish what the council has done to the roads over the last decade. I've crossed Ferry Road on foot many times without getting hit by a car. How many people per annum get hit by cars in these locations that would justify this wasteful spending?

Q12 Do you support the use of speed humps to slow vehicles down on the approaches to the refuge islands?

Multi Choice No

Q13 Overall, do you support the Ferry Road pedestrian improvements?

Multi Choice No

Q14 Is there anything else we need to know before progressing these plans?

Long Text

Q2 First Name

Short Text dave

Q3 Last Name

Short Text gardner

Q4 Name of organisation/business

Short Text

Q5 Your role

Short Text

Q10 What do you like about the plan and why?

Long Text I only ever drive a car down this road. I like that you are improving the area for the people who live in the area. I know what it's like trying to cross a busy roads in Christchurch and overseas where roads are very anti people

Q11 What don't you like about the plan and why?

Long Text na

Q12 Do you support the use of speed humps to slow vehicles down on the approaches to the refuge islands?

Multi Choice Yes

Q13 Overall, do you support the Ferry Road pedestrian improvements?

Multi Choice Yes

Q14 Is there anything else we need to know before progressing these plans?

Long Text Please try to make the edge of the footpath/road as flat as possible so it's not hard for people on mobility scooters, prams, children bicycles to cross. A good way to do this would be to raise the crossing area on the road higher, maybe extend the speed bumps so people are crossing over the bumps?
since no stopping is going on the sides of the road, is it possible to make the pedestrian islands even wider, by pushing the car and bicycle lane more towards the footpath?

Q2 First Name

Short Text Treena

Q3 Last Name

Short Text Davidson

Q4 Name of organisation/business

Short Text

Q5 Your role

Short Text

Q10 What do you like about the plan and why?

Long Text Support pedestrian crossings on Ferry Road as this is a difficult road to cross.

Q11 What don't you like about the plan and why?

Long Text Concerned that when exiting Ryan Street by car it will be very difficult to turn right particularly in heavy traffic. Currently you can use the centre lines to pull out and merge into traffic. The island appears to make this difficult. Ryan Street is a no exit street with an increasing number of houses and traffic from the school. We would support a concept that includes better ingress and egress onto Ryan Street particularly when traffic is backed up at the lights. It can be extremely difficult to enter the street from the left on Ferry Road too in busy traffic.

Q12 Do you support the use of speed humps to slow vehicles down on the approaches to the refuge islands?

Multi Choice Yes

Q13 Overall, do you support the Ferry Road pedestrian improvements?

Multi Choice Somewhat

Q14 Is there anything else we need to know before progressing these plans?

Long Text Please spend time observing traffic movements onto and off Ryan Street in heavy traffic.

Q2 First Name

Short Text Anna

Q3 Last Name

Short Text Ward

Q4 Name of organisation/business

Short Text

Q5 Your role

Short Text

Q10 What do you like about the plan and why?

Long Text

Q11 What don't you like about the plan and why?

Long Text

RYAN STREET CROSSING: MY OBSERVATIONS

- very few people cross the street at this point. I am very aware of this as I back out of my driveway many times a day. I need to be very aware of cars/bikes turning out of Ryan St and heading to town as we would crash ,if I did not wait for them before proceeding to back out on the road. I rarely encounter pedestrians coming across at this point. I therefore question the need for "the improvements " at this location.
- I see students from Linwood high School using the lights to cross at the Aldwin/Ensors/Ferry Rd intersection. They walk from the school thru the playing fields, then thru Edmonds gardens, rather than use Ryan St to gain entry to the school (from the South)
- Traffic heading out of town is often backed up from the traffic lights many times during the day and especially between 4.30 and 6pm (It would be easy to cross the road at these times as the cars are at a stand still). This also makes me wonder why would you put speed humps on part of the road where traffic is often at a stand still and when there are speed humps only 100 meters up the road before the controlled intersection.

ISSUE RELATING TO 322 FERRY RD (property in 2 titles)

- I note that the crossing will not affect my entry to my property. I however am not that young and may not be living there for much longer. My property is over 1300 sq metres and is in two titles. Developers are continually wanting to buy the two sites. I note that for the east title site (should it ever be developed in the future, which no doubt it will be, as my house is 135years old) drivers would not be able to turn directly into this site (because of the structure of the proposed crossing restrictng access), if they come from town. Instead they will need to drive to the Aldwins/Ensors rd intersection and do a U turn there. The road is a single lane and it would be difficult and dangerous to do this, and in doing this would hold up turning traffic going into Ensors rd.

MY OVERVIEW/CONCLUSION

The development of four crossing over Ferry Rd between Wilsons Rd and Aldwins Rd would be OVER THE TOP of what is required in terms of improved safety. I would be happy to discuss these issues further

Q12 Do you support the use of speed humps to slow vehicles down on the approaches to the refuge islands?

Multi Choice No

Q13 Overall, do you support the Ferry Road pedestrian improvements?

Multi Choice No

Q14 Is there anything else we need to know before progressing these plans?

Long Text

Q2 First Name

Short Text Bill

Q3 Last Name

Short Text Marks

Q4 Name of organisation/business

Short Text

Q5 Your role

Short Text

Q10 What do you like about the plan and why?

Long Text I like the the expansion of refuge islands to make it safer for pedestrians and the no parking lines to improve visibility for all.

Q11 What don't you like about the plan and why?

Long Text I'm not keen on speed humps and would like to see instead a speed reduction for this stretch of road. One thing that speed humps create is to place cars into their most fuel inefficient mode of driving, that is, slowing down and speeding up multiple times. This creates a lot more pollution which the city has a legal and strategic obligation to reduce. pol This is contained in the likes of the Local Government Act 2002 and the RMA Act 1991. The Councililil has also commitments to reduce emmissions to set targets to net zero. There is already speed humps at the Ferry, Aldwins, Ensors intersection and I'm concerned that already frustrated drivers will react badly to four more sets of them in a short stretch of road. This would also cause even more congestion to the morning and afternoon traffic which is pretty bad already!

Q12 Do you support the use of speed humps to slow vehicles down on the approaches to the refuge islands?

Multi Choice No

Q13 Overall, do you support the Ferry Road pedestrian improvements?

Multi Choice Somewhat

Q14 Is there anything else we need to know before progressing these plans?

Long Text I support lowering the speed limit for the safety of pedestrians.

Q2 First Name

Short Text irene

Q3 Last Name

Short Text Marks

Q4 Name of organisation/business

Short Text

Q5 Your role

Short Text

Q10 What do you like about the plan and why?

Long Text good that pedestrian access across Ferry Rd is addressed.

Q11 What don't you like about the plan and why?

Long Text do speed bumps actually work?

Q12 Do you support the use of speed humps to slow vehicles down on the approaches to the refuge islands?

Multi Choice Don't know/not sure

Q13 Overall, do you support the Ferry Road pedestrian improvements?

Multi Choice Yes

Q14 Is there anything else we need to know before progressing these plans?

Long Text Im not sure it would be necessary to have a give way sign at the end of Ryan street as its pretty obvious you have to give way. I only hope that this work does not make it harder to turn right right out of Ryan street. Hopefully the "island" wont be too close to the intersection.
From your survey its interesting to see that most people crossed the road out of the mad butcher to Isabelle Pl rather than by Ryan Street. Would it be better placed where the people cross?

Q2 First Name

Short Text Tony

Q3 Last Name

Short Text Ward

Q4 Name of organisation/business

Short Text

Q5 Your role

Short Text

Q10 What do you like about the plan and why?

Long Text Nothing.

Q11 What don't you like about the plan and why?

Long Text The proposed plan will contribute to 400m of stalled traffic along this section during the most of week day hrs and a lesser extent on the weekends. This is a major road.

Speed humps have the adverse affect to impede the flow of traffic. Traffic engineering analysis is known to show that vehicle flow along the entire Rd will be restricted to the slowest speed at the restriction point being the speed humps.

Speed humps contribute to decreased safety for vehicles. The humps are a hazard to low slung vehicles. Drivers loose awareness and attention when confined to vehicle queues exacerbated by additional speed humps.

There is already two island crossing at each end of the proposed plan. Oliviers Rd and near Aldwins Rd. Why do we need more.

The proposed additional speed hump pedestrian crossings have refuge Islands in the middle of the road. These are a major hazard to emergency vehicles and prevent easy traffic by pass.

The proposed crossing near Ryan St is silly. From observation there seems to be no significant foot traffic trying to cross at this location. Ryan St does not seem to be the favoured access point to the high school. Most go through the Edmonds garden. The published foot counts seem to confirm this.

Ferry Rd can generally be crossed safety as it is often congested or stalled with back up traffic.

Q12 Do you support the use of speed humps to slow vehicles down on the approaches to the refuge islands?

Multi Choice No

Q13 Overall, do you support the Ferry Road pedestrian improvements?

Multi Choice No

Q14 Is there anything else we need to know before progressing these plans?

Long Text The proposed plan will contribute to 400m of stalled traffic along this section during the most of week day hrs and a lesser extent on the weekends. This is a major road.

Speed humps have the adverse affect to impede the flow of traffic. Traffic engineering analysis is known to show that vehicle flow along the entire Rd will be restricted to the slowest speed at the restriction point being the speed humps.

Speed humps contribute to decreased safety for vehicles. The humps are a hazard to low slung vehicles. Drivers loose awareness and attention when confined to vehicle queues exacerbated by additional speed humps.

There is already two island crossing at each end of the proposed plan. Oliviers Rd and near Aldwins Rd. Why do we

need more.

The proposed additional speed hump pedestrian crossings have refuge Islands in the middle of the road. These are a major hazard to emergency vehicles and prevent easy traffic by pass.

The proposed crossing near Ryan St is silly. From observation there seems to be no significant foot traffic trying to cross at this location. Ryan St does not seem to be the favoured access point to the high school. Most go through the Edmonds garden. The published foot counts seem to confirm this.

Ferry Rd can generally be crossed safely as it is often congested or stalled with back up traffic.

Q2 First Name

Short Text Danny

Q3 Last Name

Short Text Rood

Q4 Name of organisation/business

Short Text

Q5 Your role

Short Text

Q10 What do you like about the plan and why?

Long Text Great to see the desire lines published this to help inform the decision.

Wider footpaths = shorter crossing distances

More designated places for people to cross, slower speed limits, speed humps

Q11 What don't you like about the plan and why?

Long Text Again, a missed chance to create protected cycleways to connect into the network. Easily achievable. Why another unnecessarily wide flush median (why?!?!)

Why the three month wait between consultation, community board session, and another three to six month wait for construction? This could all be done and dusted in 2025. People want bang for their buck from their rates. This looks like a pretty straight forward project and could be done much more quickly. Risks being paused "cos it's election season"

Q12 Do you support the use of speed humps to slow vehicles down on the approaches to the refuge islands?

Multi Choice Yes

Q13 Overall, do you support the Ferry Road pedestrian improvements?

Multi Choice Yes

Q14 Is there anything else we need to know before progressing these plans?

Long Text Commend the concept and won't let perfect get in the way of good. However, again, the lack of protected cycleway is almost a bingo card item at this point.

Too much of a chance for people with their reckons to challenge what is proven to work. They've got honest anxieties, and that's understandable, but they're a vocal minority

Q2 First Name

Short Text Melissa-Lee

Q3 Last Name

Short Text Mitchell

Q4 Name of organisation/business

Short Text

Q5 Your role

Short Text

Q10 What do you like about the plan and why?

Long Text Nothing

Q11 What don't you like about the plan and why?

Long Text No-parking zones, islands & speed bumps aren't going to improve safety. All it's going to do is make exiting Bordesley Street onto Ferry Road, heading toward Moorhouse, even more difficult than it already is. You'll make already frustrated drivers even more frustrated, meaning a potential increase in accidents.

Q12 Do you support the use of speed humps to slow vehicles down on the approaches to the refuge islands?

Multi Choice No

Q13 Overall, do you support the Ferry Road pedestrian improvements?

Multi Choice No

Q14 Is there anything else we need to know before progressing these plans?

Long Text It would be better if there were traffic lights at the Bordesley/Ferry intersection, and "keep clear" zones marked at the intersection.

Q2 First Name

Short Text Jose

Q3 Last Name

Short Text Aquino

Q4 Name of organisation/business

Short Text

Q5 Your role

Short Text

Q10 What do you like about the plan and why?

Long Text Nothing

Q11 What don't you like about the plan and why?

Long Text 4 crossings and islands in such a small space is unnecessary and over the top. Why is a painted pedestrian crossing not sufficient? This plan is uneconomic given how much it will cost to benefit only a handful of people.

Ferry Road is a major transport thoroughfare, slowing it down with more speed bumps and crossings will make congestion worse, no consideration seems to have been given for this in the plan. Why can't pedestrians walk a few meters to an already existing crossing? It seems this plan may in part be motivated by laziness on the part of some pedestrians.

Q12 Do you support the use of speed humps to slow vehicles down on the approaches to the refuge islands?

Multi Choice No

Q13 Overall, do you support the Ferry Road pedestrian improvements?

Multi Choice No

Q14 Is there anything else we need to know before progressing these plans?

Long Text These speed bumps will impede emergency services using Ferry Road.

Q2 First Name

Short Text Dan

Q3 Last Name

Short Text Harris

Q4 Name of organisation/business

Short Text

Q5 Your role

Short Text

Q10 What do you like about the plan and why?

Long Text

Q11 What don't you like about the plan and why?

Long Text There will be too many speed humps down Ferry Rd with this proposal. Zebra crossings are an effective way to cross without needing speed humps. Speed humps should remain at intersections with lights. I already frequently drive over the high humps at the intersections of Ferry Rd/ Aldwins Rd, and also at Aldwins/ Linwood Ave. My preference is to have a zebra crossing or a dedicated island for pedestrians only and have seen these work very effectively.

Q12 Do you support the use of speed humps to slow vehicles down on the approaches to the refuge islands?

Multi Choice No

Q13 Overall, do you support the Ferry Road pedestrian improvements?

Multi Choice No

Q14 Is there anything else we need to know before progressing these plans?

Long Text

Q2 First Name

Short Text Aleksandra

Q3 Last Name

Short Text Nakusova

Q4 Name of organisation/business

Short Text

Q5 Your role

Short Text

Q10 What do you like about the plan and why?

Long Text I like your idea removing the carpark around the crossing. That's really necessary.

Q11 What don't you like about the plan and why?

Long Text I don't like that the crossing close to Olliviers Road is planned to be after the intersection instead of before the intersection, like it is now. That's further from the bus stop so many people will still cross in a different place, closer to the bus stop.

The speed bumps don't seem great to me either. They will stop the traffic even if there are no people crossing the street at all. It would make more sense to install a traffic light instead. This will also greatly help people with reduced mobility to cross the street there. I often see a guy in a wheelchair who waits for ages there because the cars just don't stop for him.

Q12 Do you support the use of speed humps to slow vehicles down on the approaches to the refuge islands?

Multi Choice Don't know/not sure

Q13 Overall, do you support the Ferry Road pedestrian improvements?

Multi Choice Somewhat

Q14 Is there anything else we need to know before progressing these plans?

Long Text I'd really appreciate if CCC also looked into crime safety in this area too. It's gotten much worse in the past year.

Q2 First Name

Short Text Dean

Q3 Last Name

Short Text Walker

Q4 Name of organisation/business

Short Text

Q5 Your role

Short Text

Q10 What do you like about the plan and why?

Long Text Safer for pedestrians

Q11 What don't you like about the plan and why?

Long Text I assume all crossing will have bricked platforms. That would be good. 4 speed humps is quite a lot, maybe not for all crossings. Just the ones opposite Olliviers and Mathesons.

Q12 Do you support the use of speed humps to slow vehicles down on the approaches to the refuge islands?

Multi Choice Don't know/not sure

Q13 Overall, do you support the Ferry Road pedestrian improvements?

Multi Choice Yes

Q14 Is there anything else we need to know before progressing these plans?

Long Text

Q2 First Name

Short Text Allan

Q3 Last Name

Short Text Burns

Q4 Name of organisation/business

Short Text

Q5 Your role

Short Text

Q10 What do you like about the plan and why?

Long Text putting speed humps and refuge islands in will make it easier to cross the road

Q11 What don't you like about the plan and why?

Long Text to keep everyone safe people riding bikes need to be separated from motor vehicles and not allow motor bikes on bike lanes

Q12 Do you support the use of speed humps to slow vehicles down on the approaches to the refuge islands?

Multi Choice Yes

Q13 Overall, do you support the Ferry Road pedestrian improvements?

Multi Choice Yes

Q14 Is there anything else we need to know before progressing these plans?

Long Text too many red light runners in Christchurch according to this youtube channel
<https://www.youtube.com/@redlightrunnersdangerousdr1387/videos>

Q2 First Name

Short Text Nick

Q3 Last Name

Short Text Gread

Q4 Name of organisation/business

Short Text

Q5 Your role

Short Text

Q10 What do you like about the plan and why?

Long Text Certainly more safety.

Q11 What don't you like about the plan and why?

Long Text Why not have actual pedestrian crossings for more safety.

Q12 Do you support the use of speed humps to slow vehicles down on the approaches to the refuge islands?

Multi Choice Yes

Q13 Overall, do you support the Ferry Road pedestrian improvements?

Multi Choice Somewhat

Q14 Is there anything else we need to know before progressing these plans?

Long Text Yellow crossed lines need to be on ferry road at the entry to Ryan street.
What happened to the widening of ferry road?
The bus stop between Bordesley and Ryan streets needs a total revamp, it's extremely unsafe, uneven surfaces, floods easily.

Q2 First Name

Short Text Darren

Q3 Last Name

Short Text Dean

Q4 Name of organisation/business

Short Text

Q5 Your role

Short Text

Q10 What do you like about the plan and why?

Long Text

Q11 What don't you like about the plan and why?

Long Text This will encourage people to dilly dally across a busy arterial route - why? to pick up their prescriptions or buy takeaways? Far out.

Q12 Do you support the use of speed humps to slow vehicles down on the approaches to the refuge islands?

Multi Choice No

Q13 Overall, do you support the Ferry Road pedestrian improvements?

Multi Choice No

Q14 Is there anything else we need to know before progressing these plans?

Long Text The vast majority of road users do not support speed humps.
If people wish to cross a busy arterial route they need to factor that into their thinking. This idea that traffic in both directions needs to be impeded so one person can cross the road like some grand parting of the red sea is absurd.

Q2 First Name

Short Text Christine

Q3 Last Name

Short Text Speak

Q4 Name of organisation/business

Short Text

Q5 Your role

Short Text

Q10 What do you like about the plan and why?

Long Text A couple of crossings in strategic positions may work to help pedestrians

Q11 What don't you like about the plan and why?

Long Text This plan is poorly thought through. Peak hours traffic is high volume and is very slow so no issue for Pedestrians and most cross where they choose and will not use crossings. The speed humps on both sides of Ferry Road crossing is very dangerous and badly done so more will only cause more issues. Having lived in this area for 40 years I have never seen traffic management worse.

Q12 Do you support the use of speed humps to slow vehicles down on the approaches to the refuge islands?

Multi Choice No

Q13 Overall, do you support the Ferry Road pedestrian improvements?

Multi Choice Somewhat

Q14 Is there anything else we need to know before progressing these plans?

Long Text Signage to support islands and crossings only needed. Some Pedestrians need to take responsibility for their own behavior

Q2 First Name

Short Text Rachel

Q3 Last Name

Short Text Peters

Q4 Name of organisation/business

Short Text

Q5 Your role

Short Text

Q10 What do you like about the plan and why?

Long Text Refuge islands making it easier for pedestrians to cross

Q11 What don't you like about the plan and why?

Long Text Speed humps, after the installment of speed humps at Aldwins road the traffic on Ferry Road is much worse. Fewer cars are able to pass through the intersection causing conjection. Don't want more conjection in my local area.

Q12 Do you support the use of speed humps to slow vehicles down on the approaches to the refuge islands?

Multi Choice No

Q13 Overall, do you support the Ferry Road pedestrian improvements?

Multi Choice Somewhat

Q14 Is there anything else we need to know before progressing these plans?

Long Text The speed humps will lead to more conjection on an already busy Road. This will inadvertently make it more dangerous for pedestrians due to more conflict points, queued cars or trucks may hide pedestrians waiting to cross. I have witnessed frustrated drivers driving dangerously along this stretch of road, more traffic may lead to erratic movements of drivers and lane change related crashes. I have witnessed on numerous occasions drivers using the cycle lane to undercut traffic.

Q2 First Name

Short Text Antoine

Q3 Last Name

Short Text Desnos

Q4 Name of organisation/business

Short Text

Q5 Your role

Short Text

Q10 What do you like about the plan and why?

Long Text Helping pedestrian cross safely.
That will also have the good effect to stop the continuous flow of cars

Q11 What don't you like about the plan and why?

Long Text

Q12 Do you support the use of speed humps to slow vehicles down on the approaches to the refuge islands?

Multi Choice Yes

Q13 Overall, do you support the Ferry Road pedestrian improvements?

Multi Choice Yes

Q14 Is there anything else we need to know before progressing these plans?

Long Text

Q2 First Name

Short Text Danny

Q3 Last Name

Short Text Samuelu

Q4 Name of organisation/business

Short Text

Q5 Your role

Short Text

Q10 What do you like about the plan and why?

Long Text The island to cross

Q11 What don't you like about the plan and why?

Long Text The speed hump

Q12 Do you support the use of speed humps to slow vehicles down on the approaches to the refuge islands?

Multi Choice No

Q13 Overall, do you support the Ferry Road pedestrian improvements?

Multi Choice Somewhat

Q14 Is there anything else we need to know before progressing these plans?

Long Text No more speed humps, an island for people to cross will do. Traffic is already at a stand still in peak hours

Q2 First Name

Short Text Genesis

Q3 Last Name

Short Text Buckley

Q4 Name of organisation/business

Short Text

Q5 Your role

Short Text

Q10 What do you like about the plan and why?

Long Text I like that it prioritises pedestrian safety over vehicle speed, especially as vehicles are generally going to be stopped soon by queues or red lights along here anyway.

I am a regular user of this road both by car and on foot and I would much rather have pedestrians crossing safely in one place than making dashes between vehicles in unpredictable places as they do now.

I like that the speed bumps don't give drivers a choice about slowing down, because given a choice many of them will not prioritise pedestrian safety over their own convenience.

Q11 What don't you like about the plan and why?

Long Text

Q12 Do you support the use of speed humps to slow vehicles down on the approaches to the refuge islands?

Multi Choice Yes

Q13 Overall, do you support the Ferry Road pedestrian improvements?

Multi Choice Yes

Q14 Is there anything else we need to know before progressing these plans?

Long Text

Q2 First Name

Short Text Chris

Q3 Last Name

Short Text Ross-Smith

Q4 Name of organisation/business

Short Text

Q5 Your role

Short Text

Q10 What do you like about the plan and why?

Long Text I like the repainting of the bus stops. These will help the standout more.
The refuge islands are a good idea to allow a safe place to wait for a gap in the traffic.

Q11 What don't you like about the plan and why?

Long Text I don't agree with the speed humps. This is over engineering a solution to no real problem. Natural traffic flow is usually slow in this part of Ferry Road due to the buildup.

Q12 Do you support the use of speed humps to slow vehicles down on the approaches to the refuge islands?

Multi Choice No

Q13 Overall, do you support the Ferry Road pedestrian improvements?

Multi Choice Somewhat

Q14 Is there anything else we need to know before progressing these plans?

Long Text

Q2 First Name

Short Text Sharon

Q3 Last Name

Short Text Crane

Q4 Name of organisation/business

Short Text

Q5 Your role

Short Text

Q10 What do you like about the plan and why?

Long Text Pedestrian crossing are fine.

Q11 What don't you like about the plan and why?

Long Text The raised speed platforms are absolutely ridiculous. They cost more money than the council or us ratepayers can afford. They achieve nothing other than congest the roads.

Q12 Do you support the use of speed humps to slow vehicles down on the approaches to the refuge islands?

Multi Choice No

Q13 Overall, do you support the Ferry Road pedestrian improvements?

Multi Choice No

Q14 Is there anything else we need to know before progressing these plans?

Long Text Stop spending money we don't have. We cannot afford to carry on like this any longer.

Q2 First Name

Short Text Lisa

Q3 Last Name

Short Text Wright

Q4 Name of organisation/business

Short Text

Q5 Your role

Short Text

Q10 What do you like about the plan and why?

Long Text Nothing. It is such a waste of money and time that could be better used for more worthwhile projects.

Q11 What don't you like about the plan and why?

Long Text Costs
Further adding to the congestion that is already bad enough.
Cars don't travel fast during high peak times due to traffic congestion, which is also when most of the pedestrians
Will be crossing.
The speed bumps aren't great for cars
Those who are going to travel fast still do with the bumps anyway.

Q12 Do you support the use of speed humps to slow vehicles down on the approaches to the refuge islands?

Multi Choice No

Q13 Overall, do you support the Ferry Road pedestrian improvements?

Multi Choice No

Q14 Is there anything else we need to know before progressing these plans?

Long Text

Q2 First Name

Short Text Cara

Q3 Last Name

Short Text Thomson

Q4 Name of organisation/business

Short Text

Q5 Your role

Short Text

Q10 What do you like about the plan and why?

Long Text The pedestrian islands are a good idea as it the number of cars and people trying to cross can be a problem

Q11 What don't you like about the plan and why?

Long Text The speed humps, the Aldwin and ferry road crossing is a joke now with less traffic getting through and longer wait times meaning I see more people running oranges and reds in frustration. It isn't improving safety at all especially as it's got crossing lights for pedestrians.

Q12 Do you support the use of speed humps to slow vehicles down on the approaches to the refuge islands?

Multi Choice No

Q13 Overall, do you support the Ferry Road pedestrian improvements?

Multi Choice Somewhat

Q14 Is there anything else we need to know before progressing these plans?

Long Text

Q2 First Name

Short Text Kim

Q3 Last Name

Short Text Turner

Q4 Name of organisation/business

Short Text

Q5 Your role

Short Text

Q10 What do you like about the plan and why?

Long Text It is really important to have safer places to cross in the areas identified. I drive Ferry Rd everyday, and almost every day there is a pedestrian crossing traffic unsafely.
Having safer places to wait in refugee islands is a great idea. However, having four speed bumps down the section of road will cause major delays and congestion on the road.

Q11 What don't you like about the plan and why?

Long Text I don't think four speed bumps are necessary, they will slow traffic too much and cause too much congestion. During busy times of the day, this is already standstill traffic - which can be safely crossed with a refugee island. The problem is not the traffic going too fast down Ferry Rd, its always very slow... the problem is there is so much traffic.
Having some islands and better signage is an appropriate level of action.

Q12 Do you support the use of speed humps to slow vehicles down on the approaches to the refuge islands?

Multi Choice No

Q13 Overall, do you support the Ferry Road pedestrian improvements?

Multi Choice Yes

Q14 Is there anything else we need to know before progressing these plans?

Long Text

Q2 First Name

Short Text Jackson

Q3 Last Name

Short Text Davey

Q4 Name of organisation/business

Short Text

Q5 Your role

Short Text

Q10 What do you like about the plan and why?

Long Text This uses very granular data to determine the best place for pedestrian crossings, which I think is the best-practice way of doing this. As pedestrians do not have safe places to cross and there have been deaths here in the past due to this lack of crossing points, I think that this plan will be very effective and dramatically improve safety. I support both the pedestrian islands and speed humps, as well as the revised cycle lane markings.

Q11 What don't you like about the plan and why?

Long Text It's all pretty good

Q12 Do you support the use of speed humps to slow vehicles down on the approaches to the refuge islands?

Multi Choice Yes

Q13 Overall, do you support the Ferry Road pedestrian improvements?

Multi Choice Yes

Q14 Is there anything else we need to know before progressing these plans?

Long Text

Q2 First Name

Short Text Jennifer

Q3 Last Name

Short Text Hoskin

Q4 Name of organisation/business

Short Text

Q5 Your role

Short Text

Q10 What do you like about the plan and why?

Long Text

Q11 What don't you like about the plan and why?

Long Text

My husband and I are concerned about how emergency traffic and that includes fire, ambulance etc will be able to negotiate the humps, at this time the vehicles travel along the median if this is to raised what happens, if the traffic moves over to the footpath what about the cyclists.

We also feel there is no need for this arrangement at Ryan St as the pedestrian crossing is so close.

Our neighbour is concerned about the constant thumps of cars travelling over humps might affect the foundations of mostly older houses.

If there are to be humps people ask could the humps be painted so they are more visible.

The 25 k speed restriction - at peak times the traffic travels about this speed anyway.

What does "Bus Friendly Humps" mean?

The Flower shop owner is concerned he will not have parking outside his shop - how will his deliveries and vehicles bringing stock be able to do this as there is a bus stop in the area next to his shop?

Q12 Do you support the use of speed humps to slow vehicles down on the approaches to the refuge islands?

Multi Choice

Q13 Overall, do you support the Ferry Road pedestrian improvements?

Multi Choice Somewhat

Q14 Is there anything else we need to know before progressing these plans?

Long Text

I write this answer on the behalf of others in the area.

We feel it would be good to have a better crossing outside the chemist/post office and also at Grafton Street but do not support one at Ryan St.

Q2 First Name

Short Text Paul

Q3 Last Name

Short Text Middleton

Q4 Name of organisation/business

Short Text

Q5 Your role

Short Text

Q10 What do you like about the plan and why?

Long Text I'm ok with pedestrian refuge islands. They will keep people in a centralised crossing location and hopefully keep crossings more uniform.

Q11 What don't you like about the plan and why?

Long Text The use of speed humps is ridiculous on a main arterial route entering the city. I own and operate (for the past 11 years) Claudes Kitchen. A business at 390 Ferry Road, that is reliant on passing customers, and the addition of the speed humps at the Aldwins/Ferry intersection has added nothing but misery to the local residents and businesses alike. We have noticed a 50% drop in customer numbers between the hours of 730am-930am and 2pm until we close at 3. This happened the day of the speedhumps opening due to the traffic being backed up for so long. Adding yet more speed humps will simply drive commuters off this route and add more to the linwood ave entry into town. It can take 5 sets of light changes now to turn right off Ferry Road onto Aldwins heading into town. The traffic is a nightmare. Which just encourages dangerous crossing habits, because people see stopped cars and take their chance.

I urge you to reconsider the addition of the speed humps, as traffic rarely if ever hits 50kph during any working hours of the weekday. Maybe a change of the speed limit to 40kph would achieve the same results r.e. lowering severity of crashes, and keeping the traffic flowing smoothly.

I urge you to all drive the road, several times a day for a week, to see what it is like in real world conditions before you make any decisions that will affect locals and commuters negatively for years to come.

On a side note..... Also consider the removal of the speed hump for traffic leaving the Aldwins/Ferry intersection on Ferry road. Slowing traffic both entering and exiting (but strangely only on the one exit) makes no sense and let's even less traffic through in a light change, causing more people to rush through the changing lights.

Q12 Do you support the use of speed humps to slow vehicles down on the approaches to the refuge islands?

Multi Choice No

Q13 Overall, do you support the Ferry Road pedestrian improvements?

Multi Choice No

Q14 Is there anything else we need to know before progressing these plans?

Long Text Walk a mile in the shoes of the locals before you make a final decision. On our side of town we seem to be seen as people that don't know how to look after ourselves and need direction, when the truth is we are fine, and would prefer support upgrading the quality of our roads and footpaths. You don't see speed humps every 70 meters down Papanui road. But boy is it smooth with nice footpaths, same goes for Wairaki road, Barrington street, Cashmere road.... I could go on.

Q2 First Name

Short Text Benjamin

Q3 Last Name

Short Text Jamieson

Q4 Name of organisation/business

Short Text

Q5 Your role

Short Text

Q10 What do you like about the plan and why?

Long Text I don't like it.

Q11 What don't you like about the plan and why?

Long Text Traffic is already terrible, especially after the aldwins rd changes. This will only make it worse.

Q12 Do you support the use of speed humps to slow vehicles down on the approaches to the refuge islands?

Multi Choice No

Q13 Overall, do you support the Ferry Road pedestrian improvements?

Multi Choice No

Q14 Is there anything else we need to know before progressing these plans?

Long Text

Q2 First Name

Short Text Rachael

Q3 Last Name

Short Text Norcross

Q4 Name of organisation/business

Short Text

Q5 Your role

Short Text

Q10 What do you like about the plan and why?

Long Text I appreciate the focus on pedestrian crossing and safety for pedestrians.

Q11 What don't you like about the plan and why?

Long Text I disagree with the addition of more speed humps. Ferry road is still an arterial route and speed humps disadvantage traffic at all times. It would make more sense to have preventative measures only during times when extra safety measures are pertinent. More speed humps will impact businesses along Ferry Road who have already had to bear the impact of extensive road works and changes. It is important to uphold their interests too.

Q12 Do you support the use of speed humps to slow vehicles down on the approaches to the refuge islands?

Multi Choice No

Q13 Overall, do you support the Ferry Road pedestrian improvements?

Multi Choice Yes

Q14 Is there anything else we need to know before progressing these plans?

Long Text

Q2 First Name

Short Text Kate

Q3 Last Name

Short Text Whithear

Q4 Name of organisation/business

Short Text

Q5 Your role

Short Text

Q10 What do you like about the plan and why?

Long Text Nothing! The new speed bumps on Aldwins Rd/Ferry are just terrible - especially the up ramp coming into Ferry Road from West to East direction. This causes back up resulting in cars stuck in the intersection when the lights are red as cars have to brake to continue through the intersection. Absolutely the worst thing I've ever seen!!!!

Q11 What don't you like about the plan and why?

Long Text As above. The speed bumps are an absolute joke and cause havoc on Ferry Road / Aldwins. Cars backed up past Portstone every day and cars stuck in the intersection after the lights are red due to cars having to brake to cross the intersection.
This is a MAIN ROAD. There is no place for speed bumps. Build a tunnel under the road. You wouldn't do this on Moorhouse, so why here?

Q12 Do you support the use of speed humps to slow vehicles down on the approaches to the refuge islands?

Multi Choice No

Q13 Overall, do you support the Ferry Road pedestrian improvements?

Multi Choice No

Q14 Is there anything else we need to know before progressing these plans?

Long Text This Council is ruining this City.

Q2 First Name

Short Text Jackie

Q3 Last Name

Short Text Campbell

Q4 Name of organisation/business

Short Text

Q5 Your role

Short Text

Q10 What do you like about the plan and why?

Long Text The pedestrian crossing is a good idea

Q11 What don't you like about the plan and why?

Long Text The speed bumps is a terrible idea most crossing are druggys they will cross no matter what . The main reason for a no is traffic gets congested on that road a lot. So it will only bring out more silly people and road rage.

Q12 Do you support the use of speed humps to slow vehicles down on the approaches to the refuge islands?

Multi Choice No

Q13 Overall, do you support the Ferry Road pedestrian improvements?

Multi Choice Somewhat

Q14 Is there anything else we need to know before progressing these plans?

Long Text That you aren't listening to people. I am still waiting for all the kids that will be apparently be cycling from the schools to the pool on smith street when you decided 13 speed humps would be a good idea . I have seen them walk and bus but no kids cycling from the schools to the pool .

Q2 First Name

Short Text Carla

Q3 Last Name

Short Text Boyce

Q4 Name of organisation/business

Short Text

Q5 Your role

Short Text

Q10 What do you like about the plan and why?

Long Text I don't like anything about the plan. If pedestrians cannot wait for a clear space to cross the road, why should cars suffer. The more humps you put in delays emergency services getting to their destination. Could be a matter of life or death.

Q11 What don't you like about the plan and why?

Long Text As a driver, speed humps are a ridiculous waste of money. I know your motive is to get cars off the road but i would hate to be in a bus slowing down the going over the hump then speeding up repeat...

Q12 Do you support the use of speed humps to slow vehicles down on the approaches to the refuge islands?

Multi Choice No

Q13 Overall, do you support the Ferry Road pedestrian improvements?

Multi Choice No

Q14 Is there anything else we need to know before progressing these plans?

Long Text Find something else to spend the money on and let cars move as they were meant to do.

Q2 First Name

Short Text Liam

Q3 Last Name

Short Text Greer

Q4 Name of organisation/business

Short Text

Q5 Your role

Short Text

Q10 What do you like about the plan and why?

Long Text Nothing

Q11 What don't you like about the plan and why?

Long Text Everything.

Q12 Do you support the use of speed humps to slow vehicles down on the approaches to the refuge islands?

Multi Choice No

Q13 Overall, do you support the Ferry Road pedestrian improvements?

Multi Choice No

Q14 Is there anything else we need to know before progressing these plans?

Long Text If you are elderly and lying, by yourself with no one around waiting for an ambulance you will regret putting all these ridiculous speed bumps in. I also look at this from a business point of view, everytime you do these works on Ferry Road, you ruin the livelihood of multiple small and large business owners. Why can't you do the work at once and be done with it rather than ruining everyones lives?

Q2 First Name

Short Text Brian

Q3 Last Name

Short Text Hill

Q4 Name of organisation/business

Short Text

Q5 Your role

Short Text

Q10 What do you like about the plan and why?

Long Text Islands are fine, if you want to do that I don't really care either way

Q11 What don't you like about the plan and why?

Long Text Speed bumps are unnecessary and only increase congestion. Ferry Road is a major road and to deliberately increase congestion is just silly. I know staff will claim that it won't increase congestion but that is simply wrong as evidenced by the increased congestion resulting from the Ferry/Aldwins speed humps. There is overwhelming public opposition to more speed humps and council needs to follow the wishes of the residents. Emergency services have expressed their opposition to speed humps and this alone should be enough to put a stop to this nonsense.

Q12 Do you support the use of speed humps to slow vehicles down on the approaches to the refuge islands?

Multi Choice No

Q13 Overall, do you support the Ferry Road pedestrian improvements?

Multi Choice No

Q14 Is there anything else we need to know before progressing these plans?

Long Text Stop wasting ratepayers money

Q2 First Name

Short Text Geoffrey

Q3 Last Name

Short Text King

Q4 Name of organisation/business

Short Text

Q5 Your role

Short Text

Q10 What do you like about the plan and why?

Long Text I like nothing about the plan waste of time and money. There is nothing wrong with traffic flow and there mis no congestion whenever I use the road.

Q11 What don't you like about the plan and why?

Long Text Waste of time and money will only clog the flow of traffic.

Q12 Do you support the use of speed humps to slow vehicles down on the approaches to the refuge islands?

Multi Choice No

Q13 Overall, do you support the Ferry Road pedestrian improvements?

Multi Choice No

Q14 Is there anything else we need to know before progressing these plans?

Long Text Yes where is the money coming from other than our back pockets!!!!

Q2 First Name

Short Text Sam

Q3 Last Name

Short Text Newton

Q4 Name of organisation/business

Short Text

Q5 Your role

Short Text

Q10 What do you like about the plan and why?

Long Text That pedestrian safety is a consideration

Q11 What don't you like about the plan and why?

Long Text The distance between each of the planned pedestrian refuge and speed humps, will only add to an already extremely congested, main arterial road.
Perhaps subway or over bridge would be more appropriate, also enabling the flow of traffic better, than the already added speed humps at the ensors rd/ferry rd intersection

Q12 Do you support the use of speed humps to slow vehicles down on the approaches to the refuge islands?

Multi Choice No

Q13 Overall, do you support the Ferry Road pedestrian improvements?

Multi Choice Somewhat

Q14 Is there anything else we need to know before progressing these plans?

Long Text

Q2 First Name

Short Text Daniel

Q3 Last Name

Short Text Collins

Q4 Name of organisation/business

Short Text

Q5 Your role

Short Text

Q10 What do you like about the plan and why?

Long Text Ferry Rd from Aldwins to Leyden has always seemed it needed pedestrian support, given the length of road and density of users. So this is a much-needed and welcome improvement. I frequently drive the stretch of road, and would welcome more pedestrian support; I also cross Ferry by foot around Barbour occasionally.

Q11 What don't you like about the plan and why?

Long Text Going from zero to four speed humps in one step may not be the most efficient for the council. If the costs are a potential hurdle, then I suggest an adaptive approach where CCC installs two initially (at Matheson and at Bordesley), and then conducts the same type of desire line monitoring. You might find that the proximity of the first two installations is sufficient to lower un-supported pedestrian crossings to an acceptably low number. If not, then add the other two. But please include the same pedestrian crossing monitoring after installation to build a dataset to evaluate the efficacy of the work.

Q12 Do you support the use of speed humps to slow vehicles down on the approaches to the refuge islands?

Multi Choice Yes

Q13 Overall, do you support the Ferry Road pedestrian improvements?

Multi Choice Yes

Q14 Is there anything else we need to know before progressing these plans?

Long Text

Q2 First Name

Short Text Letitia

Q3 Last Name

Short Text Lum

Q4 Name of organisation/business

Short Text

Q5 Your role

Short Text

Q10 What do you like about the plan and why?

Long Text Pedestrian islands are enough.

Q11 What don't you like about the plan and why?

Long Text That's way too many speed bumps.
The bumps are bad for cars, it's not fair on those who need to travel in private vehicles. We're all struggling already with cost of living and more wear and tear on vehicles makes this worse.
Speed bumps should be for side streets only, not main roads.

Q12 Do you support the use of speed humps to slow vehicles down on the approaches to the refuge islands?

Multi Choice No

Q13 Overall, do you support the Ferry Road pedestrian improvements?

Multi Choice No

Q14 Is there anything else we need to know before progressing these plans?

Long Text Where there are speed bumps coming up to lights. The light timing needs to be adjusted as less cars are getting through.

Q2 First Name

Short Text Jayne

Q3 Last Name

Short Text Daly

Q4 Name of organisation/business

Short Text

Q5 Your role

Short Text

Q10 What do you like about the plan and why?

Long Text Putting in Speed humps has got out of control with this council

Q11 What don't you like about the plan and why?

Long Text Speed humps
- Damage to cars

Q12 Do you support the use of speed humps to slow vehicles down on the approaches to the refuge islands?

Multi Choice No

Q13 Overall, do you support the Ferry Road pedestrian improvements?

Multi Choice Somewhat

Q14 Is there anything else we need to know before progressing these plans?

Long Text Stop wasting money

Q2 First Name

Short Text Hollie

Q3 Last Name

Short Text Tilbury

Q4 Name of organisation/business

Short Text

Q5 Your role

Short Text

Q10 What do you like about the plan and why?

Long Text Nothing apart from the fact it's trying to make people safer.

Q11 What don't you like about the plan and why?

Long Text The speed humps won't make crossing better they just make driving worse. Most of the time traffic is already so backed up and at a stand still that crossing is easy. The rest of the time it's quiet enough to easily find gaps to cross. Stock to adding refuge islands on their own, it's a more than adequate solution.

Q12 Do you support the use of speed humps to slow vehicles down on the approaches to the refuge islands?

Multi Choice No

Q13 Overall, do you support the Ferry Road pedestrian improvements?

Multi Choice Somewhat

Q14 Is there anything else we need to know before progressing these plans?

Long Text Ferry is already horribly congested, this should be a key factor to think about along side pedestrian crossing routes.

Q2 First Name

Short Text Andrew

Q3 Last Name

Short Text Herring

Q4 Name of organisation/business

Short Text

Q5 Your role

Short Text

Q10 What do you like about the plan and why?

Long Text There's nothing to like about this plan. No more speed bumps. We don't need more congestion causing speed bumps slowing the flow of traffic.

Q11 What don't you like about the plan and why?

Long Text No more congestion causing speed bumps slowing the flow of traffic. Creating problems for emergency services.

Q12 Do you support the use of speed humps to slow vehicles down on the approaches to the refuge islands?

Multi Choice No

Q13 Overall, do you support the Ferry Road pedestrian improvements?

Multi Choice No

Q14 Is there anything else we need to know before progressing these plans?

Long Text Do not continue with this plan. Total waste of rate payers money which could be spent on more important things

Q2 First Name

Short Text hans

Q3 Last Name

Short Text smeets

Q4 Name of organisation/business

Short Text

Q5 Your role

Short Text

Q10 What do you like about the plan and why?

Long Text the refuge island

Q11 What don't you like about the plan and why?

Long Text The speedbumps: Speedbumps are supposed to be designed to suit the intended speed of the road (50kmh) The speedbumps which are currently already there are designed for 30 kmh (as best). This makes the road a lot more dangerous and opens up CCC for liability since i can now damage my car by doing the allowed speed limit. Also putting speedbumps on intersections with traffic lights makes no sense at all, that is not the purpose of a speedbump. The people who came up with this haven't quite understood how speedbumps work. Back in europe I studied as a civil engineer and road (safety) design was a primary part of that. In short the design of the road must fit the intended speed, on Ferryroad that is not the case. Because of this ferryroad now has traffic jams at times where there weren't any, which is bad for the environment.

Q12 Do you support the use of speed humps to slow vehicles down on the approaches to the refuge islands?

Multi Choice No

Q13 Overall, do you support the Ferry Road pedestrian improvements?

Multi Choice Somewhat

Q14 Is there anything else we need to know before progressing these plans?

Long Text Make the design-layout of the road fit the design-speed of the road. This is roading 101. Adding random speedbumps, which size does not match that, is a waste of ratepayers money, makes the road more dangerous and is bad for the environment.

Q2 First Name

Short Text Liz

Q3 Last Name

Short Text Murchison

Q4 Name of organisation/business

Short Text

Q5 Your role

Short Text

Q10 What do you like about the plan and why?

Long Text It's terrible. It would slow traffic down far to much and create bottle necks further down the road

Q11 What don't you like about the plan and why?

Long Text The speed bumps. It's not necessary
Pedestrians can use the walk relief areas without needing speed bumps. Stooooooooop with he bumps!

Q12 Do you support the use of speed humps to slow vehicles down on the approaches to the refuge islands?

Multi Choice No

Q13 Overall, do you support the Ferry Road pedestrian improvements?

Multi Choice No

Q14 Is there anything else we need to know before progressing these plans?

Long Text No more bumps

Q2 First Name

Short Text Molly

Q3 Last Name

Short Text Magid

Q4 Name of organisation/business

Short Text

Q5 Your role

Short Text

Q10 What do you like about the plan and why?

Long Text I think it's great ferry road is getting pedestrian used. It's super busy and these changes will make it safer for people to walk

Q11 What don't you like about the plan and why?

Long Text I think it needs to take into account that there's a major cycleway on the road and ensure the design takes that into account for both cyclist and pedestrian safety

Q12 Do you support the use of speed humps to slow vehicles down on the approaches to the refuge islands?

Multi Choice Yes

Q13 Overall, do you support the Ferry Road pedestrian improvements?

Multi Choice Yes

Q14 Is there anything else we need to know before progressing these plans?

Long Text

Q2 First Name

Short Text Alex

Q3 Last Name

Short Text Fletcher

Q4 Name of organisation/business

Short Text

Q5 Your role

Short Text

Q10 What do you like about the plan and why?

Long Text The plan allows pedestrians to safely cross the road in strategic places along this stretch of road. The refuges make it easier to cross and the speed platforms propagate traffic flows to a sensible speed and encourage more defensive driving.

Q11 What don't you like about the plan and why?

Long Text None

Q12 Do you support the use of speed humps to slow vehicles down on the approaches to the refuge islands?

Multi Choice Yes

Q13 Overall, do you support the Ferry Road pedestrian improvements?

Multi Choice Yes

Q14 Is there anything else we need to know before progressing these plans?

Long Text

Q2 First Name

Short Text Glen

Q3 Last Name

Short Text Koorey

Q4 Name of organisation/business

Short Text

Q5 Your role

Short Text

Q10 What do you like about the plan and why?

Long Text Good to have more focused crossing points and speed management either side to minimise any potential harm

Q11 What don't you like about the plan and why?

Long Text Given the amount of traffic, it will be interesting see whether in some cases a priority crossing (eg zebra) might be required in due course instead

Q12 Do you support the use of speed humps to slow vehicles down on the approaches to the refuge islands?

Multi Choice Yes

Q13 Overall, do you support the Ferry Road pedestrian improvements?

Multi Choice Yes

Q14 Is there anything else we need to know before progressing these plans?

Long Text

Q2 First Name

Short Text Matthew

Q3 Last Name

Short Text Talbot

Q4 Name of organisation/business

Short Text

Q5 Your role

Short Text

Q10 What do you like about the plan and why?

Long Text I like that you're thinking about Ferry Rd and the impact of heavy traffic on movement between residential neighbourhoods on either side. It creates a disconnect between the eastern fringe neighbourhood hubs (Philipstown, Stanmore, Richmond) and the southeastern (Opawa, Waltham, St Martins) when they have a lot in common, and there's reason to go between. The plan is a win for pedestrians.

Q11 What don't you like about the plan and why?

Long Text Doesn't solve the old problem for bikes. The current intersection design nearby allows bike traffic from Nursery to Wilsons, but not the other way! Either you ride in the wrong direction through the lights on the right, or you ride OVER the central hump. Doh!
There's a useful cycle route north-south through Philipstown, connecting major neighbourhoods, ruined by a couple of impossible stretches. Such a wasted opportunity. I used to commute with my boy from home (Elm Grove) to school (St Marks Opawa), and it wasn't possible for him to ride this alone.

Q12 Do you support the use of speed humps to slow vehicles down on the approaches to the refuge islands?

Multi Choice Yes

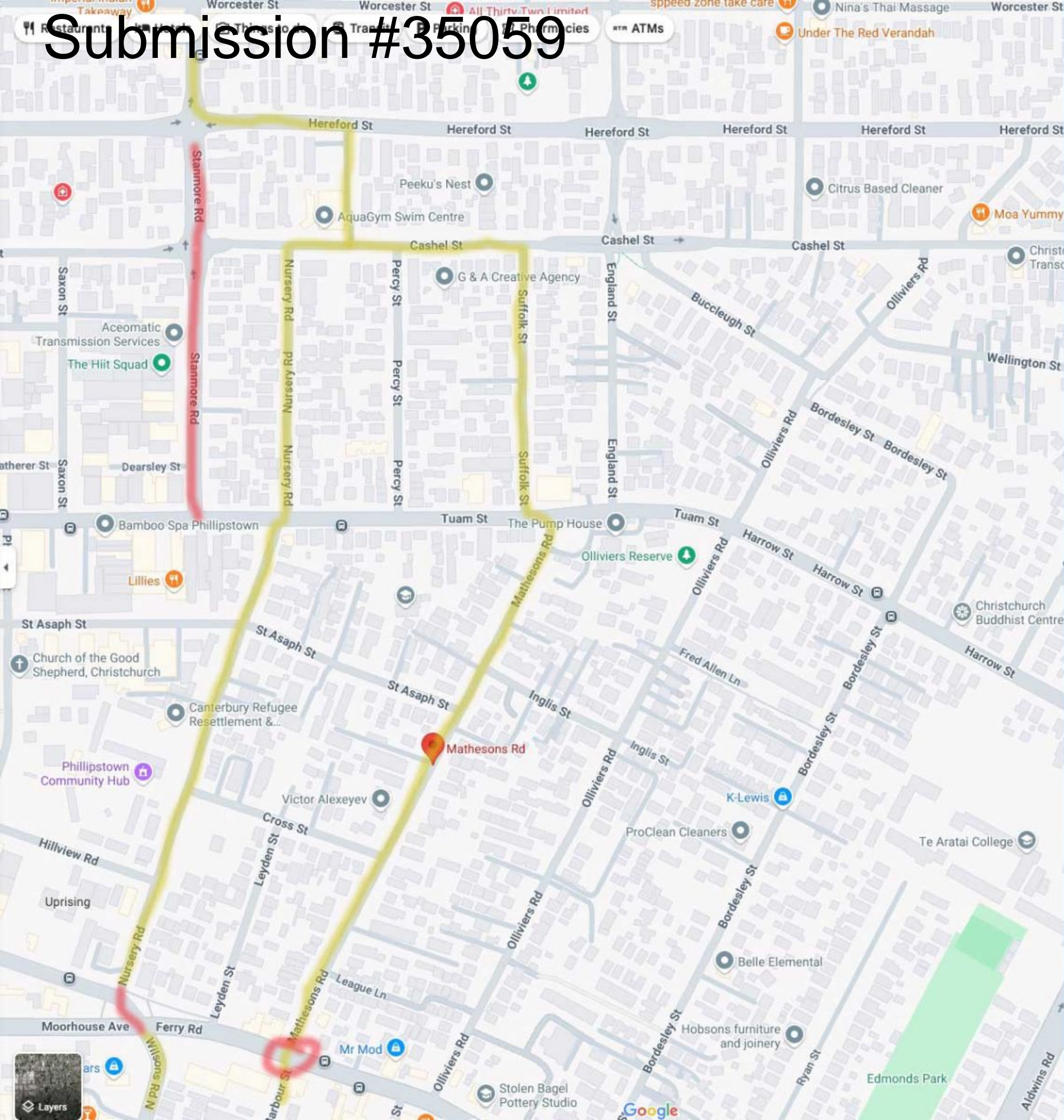
Q13 Overall, do you support the Ferry Road pedestrian improvements?

Multi Choice Somewhat

Q14 Is there anything else we need to know before progressing these plans?

Long Text Might be an opportunity to design the crossings wide enough for bike refuge too? Start encouraging riders to use quiet back streets instead of making such a big deal about cycleways. For many cyclists this is a perfect solution. Nursery Rd **should** be a filled with cyclists... direct north south connections .. low traffic .. Mathesons, Olliviers .. too ..

Submission #35059



Q2 First Name

Short Text Patrick

Q3 Last Name

Short Text White

Q4 Name of organisation/business

Short Text

Q5 Your role

Short Text

Q10 What do you like about the plan and why?

Long Text Nothing this is stupid and a waste of money

Q11 What don't you like about the plan and why?

Long Text Everything, no thought has gone into the real issues in this area and the congestion is already getting worse this is only only to make it worse.

Q12 Do you support the use of speed humps to slow vehicles down on the approaches to the refuge islands?

Multi Choice No

Q13 Overall, do you support the Ferry Road pedestrian improvements?

Multi Choice No

Q14 Is there anything else we need to know before progressing these plans?

Long Text Fix the roads and curbs!! The basics need to be brought to an acceptable level before looking at ways to improve safety.

Don't waste our money!

Q2 First Name

Short Text Stephen

Q3 Last Name

Short Text Ashley

Q4 Name of organisation/business

Short Text

Q5 Your role

Short Text

Q10 What do you like about the plan and why?

Long Text It's great that people have safer locations to cross Ferry Road. Clearly people were crossing anyway, so allowing them to do so with an island and speed bump to help them is a positive move.

Q11 What don't you like about the plan and why?

Long Text None of the proposed crossings give people the right of way. The proposed solution works well in very congested traffic and low traffic, but will still be difficult to cross in busy, but free flowing traffic. Can at least one of the most used locations get a zebra crossing or traffic light?

Q12 Do you support the use of speed humps to slow vehicles down on the approaches to the refuge islands?

Multi Choice Yes

Q13 Overall, do you support the Ferry Road pedestrian improvements?

Multi Choice Yes

Q14 Is there anything else we need to know before progressing these plans?

Long Text

Q2 First Name

Short Text Kevin

Q3 Last Name

Short Text Johnson

Q4 Name of organisation/business

Short Text

Q5 Your role

Short Text

Q10 What do you like about the plan and why?

Long Text Nothing

Q11 What don't you like about the plan and why?

Long Text Everything- stop the speed bumps

Q12 Do you support the use of speed humps to slow vehicles down on the approaches to the refuge islands?

Multi Choice No

Q13 Overall, do you support the Ferry Road pedestrian improvements?

Multi Choice No

Q14 Is there anything else we need to know before progressing these plans?

Long Text Teach how to cross the road - not blaming drivers all the time. Growing up we used comment senses before crossing the road. Now don't tell me that cars are traveling quicker no as the were less safe than they are now. You are slowing traffic which causes more problems. This will make back roads busier. Stop this over reaction now you do not have our permission!!! Read the comments

Q2 First Name

Short Text Charmaine & Brian

Q3 Last Name

Short Text Rielly

Q4 Name of organisation/business

Short Text

Q5 Your role

Short Text

Q10 What do you like about the plan and why?

Long Text Nothing

Q11 What don't you like about the plan and why?

Long Text traffic volume already holds up commuters travelling from City to Christchurch East so I believe that the proposal will further exacerbate the issues.
Would like to see statistics that show how many persons have been injured whilst crossing this section of road vs the immense costs and hold ups to business's and commuters.
We manage to cross Ferry Road from Olliviers Road using the sections in the middle of the road that allow pedestrians to cross one side safely until safe to cross the other side.

Q12 Do you support the use of speed humps to slow vehicles down on the approaches to the refuge islands?

Multi Choice No

Q13 Overall, do you support the Ferry Road pedestrian improvements?

Multi Choice No

Q14 Is there anything else we need to know before progressing these plans?

Long Text Yes cost vs actual statistics of injuries to pedestrians/cyclists in Ferry Road

Q2 First Name

Short Text Anthony

Q3 Last Name

Short Text Planicka

Q4 Name of organisation/business

Short Text

Q5 Your role

Short Text

Q10 What do you like about the plan and why?

Long Text There is nothing I like about the plan.

Q11 What don't you like about the plan and why?

Long Text Council only wants to slow traffic down and only consider speed bumps and not any other considerations.

Q12 Do you support the use of speed humps to slow vehicles down on the approaches to the refuge islands?

Multi Choice No

Q13 Overall, do you support the Ferry Road pedestrian improvements?

Multi Choice Somewhat

Q14 Is there anything else we need to know before progressing these plans?

Long Text Council needs to remember that motorists pay tax which filters down to business their attempt on Ferry road and Aldwins road cnr has been nothing but poor in their design.

Q2 First Name

Short Text Greg

Q3 Last Name

Short Text Byrnes

Q4 Name of organisation/business

Short Text

Q5 Your role

Short Text

Q10 What do you like about the plan and why?

Long Text I like that the issue of safe pedestrian crossing of ferry road, between ensors and Wilsons roads has been identified. I like that the options have some basis of data capture to determine possible location of crossings. I also like that the bus stops will be better marked.

Q11 What don't you like about the plan and why?

Long Text I think that the section could better suit three crossings rather than the proposed four. I'm not convinced a crossing at Ryan is required. I would not like to see any variations which could impact the travel of buses and cyclists, given these are important to reduce congestion.

Q12 Do you support the use of speed humps to slow vehicles down on the approaches to the refuge islands?

Multi Choice Yes

Q13 Overall, do you support the Ferry Road pedestrian improvements?

Multi Choice Yes

Q14 Is there anything else we need to know before progressing these plans?

Long Text Identify and action properties where hedges and vegetation restrict the width of the footpath. Look at parking issues at the shops near Isabella place. This impacts pedestrian access and cyclists when passing the shops.

Q2 First Name

Short Text kyle

Q3 Last Name

Short Text haskell

Q4 Name of organisation/business

Short Text

Q5 Your role

Short Text

Q10 What do you like about the plan and why?

Long Text I agree that there should be pedestrian safety island as it is a busy street

Q11 What don't you like about the plan and why?

Long Text I don't like speed bumps. Why? I would do what is designed to do and that is slow the traffic down. Unfortunately, in peak time the traffic is already travelling at a slow speed. Not only that it would cause congestion. We have seen this in a number of areas where the speed limit has been reduced to 30 kmh, just look what has happened along Lincoln Rd and other main arterial roads. I still can't why Montreal St is 30kmh.
We have three pedestrian islands placed along Worcester St between Linwood Ave and Woodham rd. Which turns out to be a waste of time due to the fact that there is hardly any foot traffic even on schooldays and speedbumps have been placed by the islands. What I have heard from some Neighbours have told me that they can hear the thumps as the cars go over the bumps as I have observed around the city that lot of drivers don't even slow down even more and that includes buses. I see this often at the raised intersection on Lincoln Rd. And please do not lower the speed limit as this would also lead to congestion

Q12 Do you support the use of speed humps to slow vehicles down on the approaches to the refuge islands?

Multi Choice No

Q13 Overall, do you support the Ferry Road pedestrian improvements?

Multi Choice Yes

Q14 Is there anything else we need to know before progressing these plans?

Long Text

Q2 First Name

Short Text Mary

Q3 Last Name

Short Text White

Q4 Name of organisation/business

Short Text

Q5 Your role

Short Text

Q10 What do you like about the plan and why?

Long Text Nothing

Q11 What don't you like about the plan and why?

Long Text

1) Having looked at the supporting evidence provided in this consultation, you are looking at four changes to this stretch of road when one of the sections of pedestrian numbers is less than or well less than the other three images. Even to the extent of being 5.5%, 7%, 13.5% of the other three, yet you still propose to install speed bumps and islands.

2) There is absolutely no information about accidents involving pedestrians for any of these areas, therefore no information of the harm that needs to be mitigated.

3) Having looked at the images of crossings over two 12 hour periods I note the vast majority of these crossings took place using current islands in the middle of the road. This indicates to me that pedestrians successfully use the current islands, even though between them there are only two designated pedestrian areas for crossing.

4) There are no images for crossings around the Bordesley Street area to justify additional work, especially given only 19 crossings were recorded in the two 12 hours period.

5) That speed bumps are being considered in an area that is often over congested and can be backed, at least on one side of the road, up to half or more of the total distance being considered. Outside of peak times there are sufficient breaks in the traffic which allow safe crossing of the road for pedestrians.

6) The speed bumps designed to supposedly assist with crossing the road are likely to have a detrimental affect on Ferry Road property owners access to and exit from their driveways. Having lived in the area, on Ferry Road, over 44 years, I am used to having to judge the breaks in the traffic to enter and exit our property. But I am extremely concerned that the introduction of speed bumps will greatly change the traffic flow losing any alignment between the Moorhouse Ave and Aldwin Road lights that create the opportunity to right exit our property. I see this happening because the flow of traffic will have more slowing down points due to the four speed bumps in each direction, so as one direction slows down the other direction is picking up speed, therefore, with different drivers behaving differently it will make it harder to judge appropriate gaps to safely move into traffic flows.

7) With bedrooms in the front of our house I have noise concerns because of vehicles slowing and accelerating due to the proposed bumps which creates more noise than cars travelling at a steady pace. I have noted the ongoing noise from cars travelling over the cords on the road, I assume are for monitoring numbers of vehicles and speeds. These are two small cords but you can clearly hear the thump, thump as each car travels over them, especially at night. Given the noise from a small thing where cars do not slow down, I am dreading the noise from large speed bumps. And speed bumps always seem larger on this side of town.

Q12 Do you support the use of speed humps to slow vehicles down on the approaches to the refuge islands?

Multi Choice No

Q13 Overall, do you support the Ferry Road pedestrian improvements?

Multi Choice No

Q14 Is there anything else we need to know before progressing these plans?

Long Text

I do not see any value in speed bumps, nor in adding new islands.

If work is needed it would be for the current islands to have more pedestrian walkways through them and to ensure they are wide enough for two or three people and level with the road so they are not a tripping hazard, which the current ones appear to be.

Q2 First Name

Short Text Jeanette

Q3 Last Name

Short Text Ward

Q4 Name of organisation/business

Short Text

Q5 Your role

Short Text

Q10 What do you like about the plan and why?

Long Text I don't like anything about the plan, have you driven down ferry road recently? I think since you did your survey the amount of traffic that goes down ferry road has changed considerably. There is so much less traffic now with a lot of the businesses disappearing from the centre of the city. There aren't a lot of people walking on there. This plan is a complete waste of my my tax which I pay to the government. It would be better spent on enhancing the rail road system. Also from a health point of view I think most of the people living in this area could do with a break from noisy construction for a bit.

Q11 What don't you like about the plan and why?

Long Text

Q12 Do you support the use of speed humps to slow vehicles down on the approaches to the refuge islands?

Multi Choice No

Q13 Overall, do you support the Ferry Road pedestrian improvements?

Multi Choice No

Q14 Is there anything else we need to know before progressing these plans?

Long Text You should know this , but most of the people living in this area have been through a lot of noise and dust from buildings being removed and roadworks. I think going ahead with more is going to really impact on people's health. I think most people a wise enough to slow down when it is necessary and really putting things up above people's heads is it such a good idea with poss more earthquakes possibly looming. Spend it on something else.

Q2 First Name

Short Text Diane Christine

Q3 Last Name

Short Text Blackwell

Q4 Name of organisation/business

Short Text

Q5 Your role

Short Text

Q10 What do you like about the plan and why?

Long Text

Q11 What don't you like about the plan and why?

Long Text

Q12 Do you support the use of speed humps to slow vehicles down on the approaches to the refuge islands?

Multi Choice

Q13 Overall, do you support the Ferry Road pedestrian improvements?

Multi Choice Yes

Q14 Is there anything else we need to know before progressing these plans?

Long Text

Q2 First Name

Short Text Russell

Q3 Last Name

Short Text Sinclair

Q4 Name of organisation/business

Short Text

Q5 Your role

Short Text

Q10 What do you like about the plan and why?

Long Text Speed humps on the side roads are fine

Q11 What don't you like about the plan and why?

Long Text Speed bumps in the main road is not

Q12 Do you support the use of speed humps to slow vehicles down on the approaches to the refuge islands?

Multi Choice No

Q13 Overall, do you support the Ferry Road pedestrian improvements?

Multi Choice Somewhat

Q14 Is there anything else we need to know before progressing these plans?

Long Text

Q2 First Name

Short Text Hannah

Q3 Last Name

Short Text Murdoch

Q4 Name of organisation/business

Short Text

Q5 Your role

Short Text

Q10 What do you like about the plan and why?

Long Text I'm glad this is being address because it is difficult to cross Ferry Road when I'm walking my dog. I want Phillipstown to be more walker friendly.

Q11 What don't you like about the plan and why?

Long Text Are the refuge islands enough? I don't trust drivers to stop. The Council needs to be incentivising non-car transport, and reducing the importance of roading for cars over other modes of transport.

Q12 Do you support the use of speed humps to slow vehicles down on the approaches to the refuge islands?

Multi Choice Yes

Q13 Overall, do you support the Ferry Road pedestrian improvements?

Multi Choice Yes

Q14 Is there anything else we need to know before progressing these plans?

Long Text Please do communication campaigns on why speed bumps are important otherwise drivers become frustrated if they do not see a reason for them.
Also, please look into Tuam St- similar problem with it being a major commuting route and it's hard to cross.

Q2 First Name

Short Text Tamotu

Q3 Last Name

Short Text White

Q4 Name of organisation/business

Short Text

Q5 Your role

Short Text

Q10 What do you like about the plan and why?

Long Text I do not like anything about the plan. There is no sense in putting bumps on the road because the traffic is already restricted.

Q11 What don't you like about the plan and why?

Long Text Losing carparks because this will impact on local businesses.
The traffic will be even more restricted, especially near the lights if speed humps are added.
The numbers of pedestrians recorded crossing the street does not appear to be reflected in the locations chosen.

Q12 Do you support the use of speed humps to slow vehicles down on the approaches to the refuge islands?

Multi Choice No

Q13 Overall, do you support the Ferry Road pedestrian improvements?

Multi Choice Somewhat

Q14 Is there anything else we need to know before progressing these plans?

Long Text It would make more sense to put a traditional pedestrian crossing where it is most needed, away from the lights, and possibly near the 24 hour bakery. This would be at a much less cost to the CCC and would require cars to stop for pedestrians.

Q2 First Name

Short Text Kari

Q3 Last Name

Short Text Hunter

Q4 Name of organisation/business

Short Text

Q5 Your role

Short Text

Q10 What do you like about the plan and why?

Long Text I strongly support making Ferry Road safer for pedestrians to cross. This applies to all pedestrias, but especially young people, elders, and others who's movement is slower.
Pedestrian refuges are good for getting across one direction of traffic flow at a time.
Speed humps are good from slowing traffic to safer speeds.
Keeping parked cars clear of the approaches to the refuges enables pedestrians and motorists etc to see each other better.
New stop and give way signs will help signal the need to stop or slow - safer for cyclists and others.

Q11 What don't you like about the plan and why?

Long Text

Q12 Do you support the use of speed humps to slow vehicles down on the approaches to the refuge islands?

Multi Choice Yes

Q13 Overall, do you support the Ferry Road pedestrian improvements?

Multi Choice Yes

Q14 Is there anything else we need to know before progressing these plans?

Long Text Consider making a couple of these refuges into full (stripey) pedestrian crossings.

Please ensure that the pedestrian refuges have dimensions that will allow people with wheelchairs and wheeling cycles (including long ones), etc, can safely use them. I bus, cycle and drive on Ferry Road. (When cycling, I more often use Charles St and Wilsons Rd, where I feel much safer, but sometimes I cycle Ferry Road.) When I want to cross the road with my bike, depending on traffic flow etc, I sometimes feel safer getting off my bike and walking across. Some pedestrian refuges are a bit short for this, and the front or rear wheel protrude into the traffic lane.

I would also favour reducing the speed limit along this whole section of Ferry Road to 30kph.

Q2 First Name

Short Text Sunema

Q3 Last Name

Short Text Tusa

Q4 Name of organisation/business

Short Text

Q5 Your role

Short Text

Q10 What do you like about the plan and why?

Long Text Nothing

Q11 What don't you like about the plan and why?

Long Text The places you have highlighted as high use by pedestrians aren't overly high especially near bordesley st which was the least used.

The only place I see of value to add pedestrian crossing is in front of the 24hour bakery/dairy - however, there is already an island there! Adding speed bumps would make it even harder for those exiting Olliviers road (Drivers) than it already can be during busy hours.

There are lights to cross at at either end (Aldwins & Wilsons).

As we (my children & I) often walk Ferry road and safely cross these areas I see no need to waste taxpayers money to make an already congested/busy road have more obstacles. Are there approximate ages provided in crossing details? From what I've witnessed it's mostly adults, and teens, children accompanied by adults, or children crossing at the lights.

I previously lived on Ferry road for 20 odd years and can see this only adding frustration not safety, especially as you have not said these will be zebra crossings etc, or given many details.

Side note. Why are speed bumps on the east side so high?! I have never experienced them like this in any other part of Christchurch. Are you putting them in where you live or just targeting the 'East'?

Please just leave it as it is. I can see people trying to get out of side streets during busy periods and this proposal making it; 1. more difficult, and 2. More dangerous ie cars turning out onto Ferry rd, cars slowing for speed bumps/crossings only to accelerate afterwards, not to mention cyclists by passing bumps.

Have you looked into the damage on infrastructure these speed bumps may cause especially with bus use. Many travel Ferry road as part of their route which has been known to damage pipes etc.

Removing of car parks on a busy road, adjacent to facilities used by many ie the atm is again making it more dangerous than if proposed changes go ahead.

Q12 Do you support the use of speed humps to slow vehicles down on the approaches to the refuge islands?

Multi Choice No

Q13 Overall, do you support the Ferry Road pedestrian improvements?

Multi Choice No

Q14 Is there anything else we need to know before progressing these plans?

Long Text Don't.
You already over spend on unnecessary projects increasing rates charges every year.

Under 800 people crossing over x2 Busy 12 hour periods, compared to 20K cars doesn't justify huge costs involved, disruptions caused to the negative outcome these would provide.

Q2 First Name

Short Text Wayne

Q3 Last Name

Short Text Boyd

Q4 Name of organisation/business

Short Text

Q5 Your role

Short Text

Q10 What do you like about the plan and why?

Long Text

Q11 What don't you like about the plan and why?

Long Text
Speed humps!
Don't need Stop signs at a T-intersection.
Stop wasting ratepayers money.

Q12 Do you support the use of speed humps to slow vehicles down on the approaches to the refuge islands?

Multi Choice No

Q13 Overall, do you support the Ferry Road pedestrian improvements?

Multi Choice No

Q14 Is there anything else we need to know before progressing these plans?

Long Text

Q2 First Name

Short Text Anne

Q3 Last Name

Short Text Scott

Q4 Name of organisation/business

Short Text

Q5 Your role

Short Text

Q10 What do you like about the plan and why?

Long Text I bike through here regularly and sometimes drive. It is difficult to get across the road as a pedestrian or cyclist to get to various businesses I support slowing traffic down and making it easier to cross the road.

Q11 What don't you like about the plan and why?

Long Text

Q12 Do you support the use of speed humps to slow vehicles down on the approaches to the refuge islands?

Multi Choice Yes

Q13 Overall, do you support the Ferry Road pedestrian improvements?

Multi Choice Yes

Q14 Is there anything else we need to know before progressing these plans?

Long Text The Smith Street crossing should get the same treatment as it is used by a lot of cyclists and pedestrians.

Q2 First Name

Short Text Allan

Q3 Last Name

Short Text Taunt

Q4 Name of organisation/business

Short Text

Q5 Your role

Short Text

Q10 What do you like about the plan and why?

Long Text

This is the same for each crossings:

- Providing a focused point where people cross greatly improves safety.
- Speed humps also greatly improve safety by helping ensure speed is not excessive.
- The control signage at intersections brings consistency which also helps improve safety.

We know people can be distracted while driving or otherwise make mistakes. Safer speeds mean the consequences of those mistakes will be less severe (people will less likely to be killed or receive serious injuries).

It has been said, what about night, why should drivers slow down? Fact is people can be out and about at any time - people go to places irrespective of transport. At night it is even more important to travel at a safe speed, as there is not the visibility. There can also be a mistaken assumption there won't be any pedestrians.

Also at night drivers can forget to turn their lights on, or have faulty lights. This is a serious problem, on any given walk in the evening I see at least one driver without their lights on (often it is more than one). I'll also see many drivers with faulty lights.

In addition to drivers not seeing, the risk with no lights or faulty lights is that pedestrians may not see a vehicle when crossing. This is why speed humps are needed and why they are especially important at night.

Sunstrike can also reduce visibility, this is especially applicable on east-west/west-east roads. Again speed humps help ensure safe speeds and reduce the chances of a bad outcome should a collision occur.

Q11 What don't you like about the plan and why?

Long Text

Q12 Do you support the use of speed humps to slow vehicles down on the approaches to the refuge islands?

Multi Choice Yes

Q13 Overall, do you support the Ferry Road pedestrian improvements?

Multi Choice Yes

Q14 Is there anything else we need to know before progressing these plans?

Long Text

Value the science in making decisions. Help people understand the science.

Also realise most people are not aware of what it is like to be a vulnerable road user in a collision. Most people think they are better than the average driver and don't believe they will make a mistake. Reality is, everyone makes mistakes (in some cases, people even don't realise they have made a mistake!).

Q2 First Name

Short Text Yani

Q3 Last Name

Short Text JOHANSON

Q4 Name of organisation/business

Short Text

Q5 Your role

Short Text

Q10 What do you like about the plan and why?

Long Text I am making this submission in my personal capacity as a former resident of the area. My submission represents my personal view and does not represent the collective view of either the Council or the Community Board that I am a member of.

I support improving the safety for pedestrians and cyclists crossing the road. This is long overdue.

Q11 What don't you like about the plan and why?

Long Text I am concerned about the impact of the speed humps on buses (and their passengers), emergency services and other heavy vehicles that use this route. I am concerned that it will lead to more vibrations and shaking for the houses and buildings in this area. This plan doesn't seem to cater for cyclists going along the MCR through Charleston who wish to travel to Te Ara Tai college near Ryan Street or to other locations in Philipstown. I think it would better to have signalised crossing to create gaps in the traffic rather than speed bumps and provide a safe cycling crossing. I am concerned that the plan doesn't make any mention of the condition of the road, the future use of the road for bus priority and the potential road widening to four lanes. If the road is in poor condition and there are future plans then it would be good to know how this works aligns and creates synergy with what is proposed to come after. Otherwise, it is probably more efficient use of resources to install transitional/temporary safety measures and bring work forward to complete and construct the permanent design rather than having to dig up the safety improvements in a year or two's time at considerable cost and inconvenience.

Q12 Do you support the use of speed humps to slow vehicles down on the approaches to the refuge islands?

Multi Choice No

Q13 Overall, do you support the Ferry Road pedestrian improvements?

Multi Choice Somewhat

Q14 Is there anything else we need to know before progressing these plans?

Long Text There needs to be greater transparency with the future plans for this stretch of road. It would be good to be able to see the bigger picture and understand what other works are planned so that informed feedback can be given. For example, if traffic lights or more car parking removal is proposed as part of the bus priority plans, then surely this is very relevant to the feedback people may wish to give on this proposal as the cumulative impact will be greater than what is on this consultation plans. Likewise if the road needs to be fully reconstructed because it is in such poor condition, then perhaps residents would prefer to have that done first to reduce the vibrations from heavy vehicles that currently occur rather than making the problem worse by installing speed humps before fixing it. It would be useful to provide some information to the community about the performance of speed humps in regard to creating vibrations for local residents. And what issues (if there have been any) are in this regard on previous speed hump projects. I know from having lived on Ferry Rd near Leyden Street that there is frequent shaking of the houses from heavy vehicles at present. I would not like to see this get worse.

Q2 First Name

Short Text Paul

Q3 Last Name

Short Text Young

Q4 Name of organisation/business

Short Text

Q5 Your role

Short Text

Q10 What do you like about the plan and why?

Long Text Hi there good that you are looking at pedestrian safety

Q11 What don't you like about the plan and why?

Long Text A big NO! To speed bumps the ones at Aldwins Rd have made the intersection much worse and I have seen a lot more near misses as people suddenly slow then speed up.. It's terrible and they should be removed. So no more! Please.

Q12 Do you support the use of speed humps to slow vehicles down on the approaches to the refuge islands?

Multi Choice No

Q13 Overall, do you support the Ferry Road pedestrian improvements?

Multi Choice Yes

Q14 Is there anything else we need to know before progressing these plans?

Long Text

Q2 First Name

Short Text George

Q3 Last Name

Short Text Laxton

Q4 Name of organisation/business

Short Text

Q5 Your role

Short Text

Q10 What do you like about the plan and why?

Long Text

Q11 What don't you like about the plan and why?

Long Text

Q12 Do you support the use of speed humps to slow vehicles down on the approaches to the refuge islands?

Multi Choice Yes

Q13 Overall, do you support the Ferry Road pedestrian improvements?

Multi Choice Yes

Q14 Is there anything else we need to know before progressing these plans?

Long Text I am in support of improving the crossing here, but I think it should not just be for pedestrians but for cycles as well as I have to cross this road regularly to get to Linwood safely by going down Grafton / Olliviers and vice versa so if there is budget could the waiting places be made wider as it's quite nerve racking waiting in the middle when you are trying to cross.

I also want to support the speed bumps as they will slow down traffic outside of peak times, during peak times they won't make a difference anyway due to cars not moving so I don't see any reason not to put them in.