

Kōrero mai | Let's talk

Submission form - Barnett Park play space and tree planting plan Results

Dec 18, 2025 - Feb 01, 2026

Please note: these are all accepted submissions on Barnett Park play space and tree planting plan. The views are those of the submitters and may include mis- or disinformation, hearsay and offensive or discriminatory language.

Q1 Are you responding:

Multi Choice On behalf of a recognised organisation or business

Q2 Name of organisation/business

Short Text ParaPro Ltd

Q3 Your role

Short Text Owner, Lead instructor

Q4 Full name

Short Text Ondrej Wieden

Q7 Suburb

Select Box Mt Pleasant

Q8 Which aspect of the project do you want to provide feedback on?

Multi Choice Tree planting plan

Q9 What do you like about the play space renewal plan?

Long Text

Q10 What don't you like about the play space renewal plan?

Long Text

Q11 Overall, do you support the plan for a playground renewal?

Multi Choice

Q12 Is there anything else the Community Board needs to consider?

Long Text

Q13 Supporting information

File Upload

Q14 How important are the following aspects in this park?

Matrix
Trees with autumn colouring - Not important
Flowering trees - Important
Trees attracting birds and insects - Important
Climbable trees / trees to play in - Neither important nor unimportant
Trees providing enough shade - Neither important nor unimportant
Native trees - Important

Q15 Which aspects (if any) are you concerned about in this park?

Multi Choice
Loss of open spaces
Hazards (e.g. roots, falling branches)
Other: Trees near the north end may cause turbulence causing crashes of learner paragliding pilots

Q16 Have we got this tree planting plan right?

Multi Choice No

Q17 Tell us why you feel this way

Long Text Barnett Park is often used as a landing field for paragliders and students of local paragliding schools. Planting trees in the northern and eastern side of the park will cause turbulence downwind of these resulting in crashes and potential injuries

I support planting of new native trees in Christchurch but I see some serious hazards being created here. 3 small businesses are licenced to operate in Barnett park and this planting plan may well have an impact on the livelihood of the operators

Q18 Is there anything else the Waihoru Spreydon-Cashmere-Heathcote Community Board needs to consider?

Long Text

Q19 Supporting information

File Upload

Q1 Are you responding:

Multi Choice On behalf of a recognised organisation or business

Q2 Name of organisation/business

Short Text Cloudbase Paragliding

Q3 Your role

Short Text Operations Manager

Q4 Full name

Short Text Bevan Small

Q7 Suburb

Select Box Taylors Mistake

Q8 Which aspect of the project do you want to provide feedback on?

Multi Choice Tree planting plan

Q9 What do you like about the play space renewal plan?

Long Text

Q10 What don't you like about the play space renewal plan?

Long Text

Q11 Overall, do you support the plan for a playground renewal?

Multi Choice

Q12 Is there anything else the Community Board needs to consider?

Long Text

Q13 Supporting information

File Upload

Q14 How important are the following aspects in this park?

Matrix

Q15 Which aspects (if any) are you concerned about in this park?

Multi Choice

Q16 Have we got this tree planting plan right?

Multi Choice No

Q17 Tell us why you feel this way

Long Text See attached pdf.

Q18 Is there anything else the Waihoru Spreydon-Cashmere-Heathcote Community Board needs to consider?

Long Text

Q19 Supporting information

File Upload



Barnett Park tree planting plan response

Cloudbase Paragliding NZ Ltd

Table of Contents

1	Introduction.....	2
1.1	Recommendation	2
1.2	Summary.....	3
1.3	About Cloudbase Paragliding NZ	3
1.4	Council concession	4
2	Operations at Barnett Park	5
2.1	Flight path and obstacles in the landing zone	5

1 Introduction

1.1 Recommendation

Cloudbase Paragliding NZ recommends removing some planned trees from the landing zone or planting smaller species. These trees create new hazards for our students and may result in crashes. Removing the proposed trees indicated below would fix these issues:



Figure 1 : Cloudbase suggestion for planting at Barnett Park. X marks trees that cause issues for operation of the school

Trees crossed out in red introduce a new obstacle to clear on approach. Provided these trees do not exceed 10m then there is no appreciable hazard.

With this change Cloudbase Paragliding would support the planting at Barnett Park, appreciating the benefits of more shade and having a more pleasant park to visit.



1.2 Summary

Barnett Park is a site used by Cloudbase Paragliding for training students. It offers an exceptional flight for learners with a long, pleasant and scenic glide and a good landing.

However while the landing is long, it does feel narrow to students, and the existing trees at the southern edge of the park are a major hazard at the site as students need to clear the trees in order to make the landing.

As a site it works well in light Easterly and Northeasterly conditions and is our second most used location. Students must fly three unique locations to achieve their solo rating, making Barnett Park a key site to the school.

The planting plan supplied for the Barnett Park creates some safety concerns and as drafted would make operations at Barnett Park more hazardous.

If caught out low, students can currently come around the end of the trees in the southeast corner. Adding tall trees here reduces student's options, pushing them out low over residential housing when they are low and increasing the risk of a collision with a tree.

1.3 About Cloudbase Paragliding NZ

Cloudbase Paragliding has been operating as a school in the Port Hills of Christchurch since 2019 under the ownership of Chief Flying Instructor Grey Hamilton. In that time, Grey and his team have trained hundreds of students in the art of paragliding, with an emphasis on safe piloting.

Bevan Small is the Operations Manager for Cloudbase Paragliding and conducts most of the day-to-day instructing. Bevan Small is the main point of contact for discussing the CCC proposal and the Cloudbase Paragliding NZ submission.

Table 1 : Key Personnel

Title	Holder	Contact
Operations Manager Instructor	Bevan Small	+64 27 328 2518 info@cloudbaseparagliding.co.nz
Chief Executive Officer (CEO) Chief Flying Instructor (CFI)	Grey Hamilton	+64 27 532 4874 cbparagliding@gmail.com

Cloudbase Paragliding is a name recognised throughout the country as a safe and fun place to learn paragliding. We attract many locals to the sport, as well as pilots from Wellington, Queenstown, Wanaka and internationally from countries such as the US, England, France, the Netherlands, Tahiti and many more.



Learner pilots often base themselves in Christchurch for a month or longer, spending significant money supporting the local hospitality and tourism industries. Cloudbase provides employment for two instructors and part time employment for four assistant instructors.

1.4 Council concession

Cloudbase Paragliding holds a concession to operate its flying school on Council managed land, including in Barnett Park.

2 Operations at Barnett Park

The main considerations for planting regarding a safe approach are:

- Hazards on approach (tall trees between you and landing)
- Hazards in the landing zone (trees, bushes, posts)
- Turbulence from trees upwind of your landing

The Barnett Park plan introduces new hazards on approach, as well as some new hazards in the landing zone

2.1 Flight path and obstacles in the landing zone

An ideal flight for students is shown below:

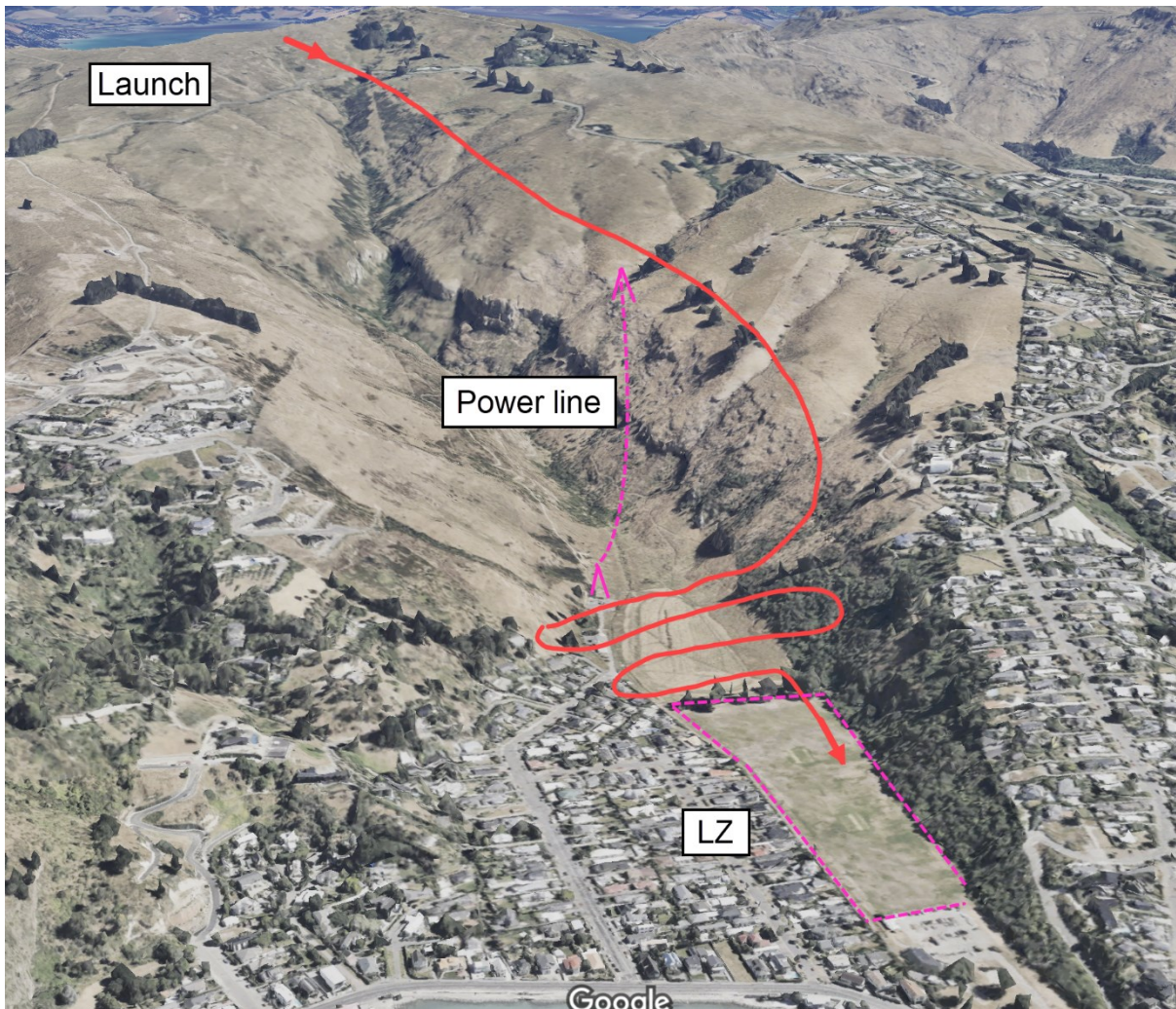


Figure 2 : Ideal student flight at Barnett Park

A good approach and landing ideally looks like the figure below.



Figure 3 : Perfect Paraglider approach and touchdown

Students may end up overshooting if they experience unexpected lift, turbulence or pilot indecision. Paragliders have quite broad turning circles, particularly in the hands of inexperienced students. In an overshoot students need room to manoeuvre and overrun the ideal landing.

Students may come in too low due to error, unexpected sink, headwinds or pilot indecision. In this scenario they ideally turn back and land behind the southern treeline. However if they miss this opportunity, their last good option is skirting around the trees at the southeast end.

Additional tall trees here would push students low over houses and into much greater risk. A very low, last option approach is shown in the figure below.



Figure 4 :Very low pilot approach, pink showing the new path this pilot would need to take if tall trees are planted here

Thus tall trees planted here creates a new risk. Small plantings (<10m) would not change the risk in this location.

Q1 Are you responding:

Multi Choice As an individual

Q2 Name of organisation/business

Short Text

Q3 Your role

Short Text

Q4 Full name

Short Text Alan Truscott

Q7 Suburb

Select Box Moncks Bay

Q8 Which aspect of the project do you want to provide feedback on?

Multi Choice Tree planting plan

Q9 What do you like about the play space renewal plan?

Long Text

Q10 What don't you like about the play space renewal plan?

Long Text

Q11 Overall, do you support the plan for a playground renewal?

Multi Choice

Q12 Is there anything else the Community Board needs to consider?

Long Text

Q13 Supporting information

File Upload

Q14 How important are the following aspects in this park?

Matrix
Trees with autumn colouring - Neither important nor unimportant
Flowering trees - Neither important nor unimportant
Trees attracting birds and insects - Important
Climbable trees / trees to play in - Important
Trees providing enough shade - Not important
Native trees - Not important

Q15 Which aspects (if any) are you concerned about in this park?

Multi Choice
Loss of open spaces
Loss of view
Debris (e.g. dropping leaves)
Too much shade
Other: More debris in the area that can block the flood drain which is there to protect the main residential area of Moncks in Bad weather events

Q16 Have we got this tree planting plan right?

Multi Choice No

Q17 Tell us why you feel this way

Long Text At a recent meeting in Barnett Park with Council representatives, Councillor Nethaniel Herzjardine, and residents. It was agreed there would be no planting of trees along the side of the flood drain, which runs between the residents' boundaries and the playing fields

Q18 Is there anything else the Waihoru Spreydon-Cashmere-Heathcote Community Board needs to consider?

Long Text

Q19 Supporting information

File Upload

Q1 Are you responding:

Multi Choice As an individual

Q2 Name of organisation/business

Short Text

Q3 Your role

Short Text

Q4 Full name

Short Text Max Peacock

Q7 Suburb

Select Box Moncks Bay

Q8 Which aspect of the project do you want to provide feedback on?

Multi Choice Play space renewal

Q9 What do you like about the play space renewal plan?

Long Text All of it.

Q10 What don't you like about the play space renewal plan?

Long Text It doesn't include the replacement of the play area removed from the Bay View Road entrance. It's a shame we don't see families at that end of the park anymore.

Q11 Overall, do you support the plan for a playground renewal?

Multi Choice Yes

Q12 Is there anything else the Community Board needs to consider?

Long Text Placing some simple structure at the Bay View Rd entrance similar to that removed last year.

Q13 Supporting information

File Upload

Q14 How important are the following aspects in this park?

Matrix

Q15 Which aspects (if any) are you concerned about in this park?

Multi Choice

Q16 Have we got this tree planting plan right?

Multi Choice Somewhat

Q17 Tell us why you feel this way

Long Text A walkway through the bush should be included.

Q18 Is there anything else the Waihoru Spreydon-Cashmere-Heathcote Community Board needs to consider?

Long Text No

Q19 Supporting information

File Upload

Q1 Are you responding:

Multi Choice As an individual

Q2 Name of organisation/business

Short Text

Q3 Your role

Short Text

Q4 Full name

Short Text Luisa Bister

Q7 Suburb

Select Box Moncks Bay

Q8 Which aspect of the project do you want to provide feedback on?

Multi Choice Play space renewal

Q9 What do you like about the play space renewal plan?

Long Text that it has a slide more suitable for little kids and the extra trees to be planted

Q10 What don't you like about the play space renewal plan?

Long Text

Q11 Overall, do you support the plan for a playground renewal?

Multi Choice Yes

Q12 Is there anything else the Community Board needs to consider?

Long Text It would be lovely to see some "adult" equipment there too. I know many that run there or cycle past or spend time there with their kids. It would be great if it catered to adults too who wish to exercise their bodies, even just a hanging/chin up bar would be helpful.
And seeing more toddler friendly equipment would also be appreciated, something for the age range 18 months to 4 years. where they can independently climb up and slide down. Thank you very much

Q13 Supporting information

File Upload

Q14 How important are the following aspects in this park?

Matrix

Q15 Which aspects (if any) are you concerned about in this park?

Multi Choice

Q16 Have we got this tree planting plan right?

Multi Choice Yes

Q17 Tell us why you feel this way

Long Text

Q18 Is there anything else the Waihoru Spreydon-Cashmere-Heathcote Community Board needs to consider?

Long Text

Q19 Supporting information

File Upload

Q1 Are you responding:

Multi Choice As an individual

Q2 Name of organisation/business

Short Text

Q3 Your role

Short Text

Q4 Full name

Short Text Sue Cooke

Q7 Suburb

Select Box Redcliffs

Q8 Which aspect of the project do you want to provide feedback on?

Multi Choice Tree planting plan

Q9 What do you like about the play space renewal plan?

Long Text

Q10 What don't you like about the play space renewal plan?

Long Text

Q11 Overall, do you support the plan for a playground renewal?

Multi Choice

Q12 Is there anything else the Community Board needs to consider?

Long Text

Q13 Supporting information

File Upload

Q14 How important are the following aspects in this park?

Matrix

Q15 Which aspects (if any) are you concerned about in this park?

Multi Choice

Q16 Have we got this tree planting plan right?

Multi Choice

Q17 Tell us why you feel this way

Long Text

Q18 Is there anything else the Waihoru Spreydon-Cashmere-Heathcote Community Board needs to consider?

Long Text Great to see plans for Barnett park!!

I am Involved with regreening the Regional Park section of Barnett Park.

We have also worked with Millie Stead and Holly Whitaker doing some beautification at the "urban parks " end of Barnett Park.

In early December 2025 myself and four young men cleaned up rubbish and pest plants from the bushy area between sports fields and Moncks Spur. By no means have we completed the task, but it did make me realise..

1. Lots of rubbish dumped by bbq
2. maybe need a rubbish bin also by the playground
3. invasive tree lucerne plants growing in the native bush ..be great if you could cut them out before planting more
4. we planted around carpark in 2023 but needs another effort
5. The pest plants we are removing in regional park are - elder trees, broom,gorse, bone seed, blackberry, and banana passionfruit. Be great if you could remove any of these you find!

Just wondering if you could do more "infill" planting in the triangular bushy area between Cave Terrace and playground.

We removed a lot of pest plants, so there will be space.

Q19 Supporting information

File Upload

Q1 Are you responding:

Multi Choice As an individual

Q2 Name of organisation/business

Short Text

Q3 Your role

Short Text

Q4 Full name

Short Text Madeleine Dy

Q7 Suburb

Select Box Moncks Bay

Q8 Which aspect of the project do you want to provide feedback on?

Multi Choice Tree planting plan

Q9 What do you like about the play space renewal plan?

Long Text

Q10 What don't you like about the play space renewal plan?

Long Text

Q11 Overall, do you support the plan for a playground renewal?

Multi Choice

Q12 Is there anything else the Community Board needs to consider?

Long Text

Q13 Supporting information

File Upload

Q14 How important are the following aspects in this park?

Matrix
Trees with autumn colouring - Not important
Flowering trees - Not important
Trees attracting birds and insects - Important
Climbable trees / trees to play in - Not important
Trees providing enough shade - Important
Native trees - Important

Q15 Which aspects (if any) are you concerned about in this park?

Multi Choice I don't have any concerns

Q16 Have we got this tree planting plan right?

Multi Choice Somewhat

Q17 Tell us why you feel this way

Long Text Thank you for the work and feel free to add MORE trees and shade for our kids! Which So important and needed (and we feel the neighboring complaints about loss of view should be of lesser priority because if we don't mitigate climate change with tall native carbon capturing trees, there will be nothing worth seeing), we as the middle age and younger generation value the future of our children and preservation of nature more than those privileged with a view.

Q18 Is there anything else the Waihoru Spreydon-Cashmere-Heathcote Community Board needs to consider?

Long Text

Q19 Supporting information

File Upload

Q1 Are you responding:

Multi Choice As an individual

Q2 Name of organisation/business

Short Text

Q3 Your role

Short Text

Q4 Full name

Short Text Sumaya Mir

Q7 Suburb

Select Box Outside of Christchurch: Rolleston

Q8 Which aspect of the project do you want to provide feedback on?

Multi Choice Tree planting plan

Q9 What do you like about the play space renewal plan?

Long Text

Q10 What don't you like about the play space renewal plan?

Long Text

Q11 Overall, do you support the plan for a playground renewal?

Multi Choice

Q12 Is there anything else the Community Board needs to consider?

Long Text

Q13 Supporting information

File Upload

Q14 How important are the following aspects in this park?

Matrix
Trees with autumn colouring - Neither important nor unimportant
Flowering trees - Neither important nor unimportant
Trees attracting birds and insects - Neither important nor unimportant
Climbable trees / trees to play in - Neither important nor unimportant
Trees providing enough shade - Neither important nor unimportant
Native trees - Neither important nor unimportant

Q15 Which aspects (if any) are you concerned about in this park?

Multi Choice Other: Making the approach for paragliders more dangerous

Q16 Have we got this tree planting plan right?

Multi Choice No

Q17 Tell us why you feel this way

Long Text

Planned trees should be removed from our landing approach or planted as shorter species at the Southeast corner of the field.
I support the Canterbury Hang Gliding and Paragliding Club submission on the Barnett Park tree planting plan. Barnett Park is an important recreational paragliding site, with a enjoyable long glide and spectacular views out over the city and New Brighton.
The proposed plan creates risks to safety. It plants obstacles on our approach that may force low pilots to veer out over housing.
The proposed planting increases the chances of a crash landing, property damage and serious injury. Removing the trees from the landing zone will make the plan acceptable for safely paragliding at Barnett Park.
I support planting at Barnett Park if the needs of hang gliders and paragliders are met.

Q18 Is there anything else the Waihoru Spreydon-Cashmere-Heathcote Community Board needs to consider?

Long Text

Q19 Supporting information

File Upload

Q1 Are you responding:

Multi Choice As an individual

Q2 Name of organisation/business

Short Text

Q3 Your role

Short Text

Q4 Full name

Short Text Theo Oswaldi

Q7 Suburb

Select Box Wigram

Q8 Which aspect of the project do you want to provide feedback on?

Multi Choice Tree planting plan

Q9 What do you like about the play space renewal plan?

Long Text

Q10 What don't you like about the play space renewal plan?

Long Text

Q11 Overall, do you support the plan for a playground renewal?

Multi Choice

Q12 Is there anything else the Community Board needs to consider?

Long Text

Q13 Supporting information

File Upload

Q14 How important are the following aspects in this park?

Matrix
Trees with autumn colouring - Neither important nor unimportant
Flowering trees - Neither important nor unimportant
Trees attracting birds and insects - Important
Climbable trees / trees to play in - Neither important nor unimportant
Trees providing enough shade - Neither important nor unimportant
Native trees - Neither important nor unimportant

Q15 Which aspects (if any) are you concerned about in this park?

Multi Choice Other: Making the approach for paragliders more dangerous

Q16 Have we got this tree planting plan right?

Multi Choice Somewhat

Q17 Tell us why you feel this way

Long Text

Planned trees should be removed from our landing approach or planted as shorter species at the Southeast corner of the field.

I support the Canterbury Hang Gliding and Paragliding Club submission on the Barnett Park tree planting plan. Barnett Park is an important recreational paragliding site, with a enjoyable long glide and spectacular views out over the city and New Brighton.

The proposed plan creates risks to safety. It plants obstacles on our approach that may force low pilots to veer out over housing.

The proposed planting increases the chances of a crash landing, property damage and serious injury. Removing the trees from the landing zone will make the plan acceptable for safely paragliding at Barnett Park.

I support planting at Barnett Park if the needs of hang gliders and paragliders are met.

Q18 Is there anything else the Waihoru Spreydon-Cashmere-Heathcote Community Board needs to consider?

Long Text

Q19 Supporting information

File Upload

Q1 Are you responding:

Multi Choice As an individual

Q2 Name of organisation/business

Short Text

Q3 Your role

Short Text

Q4 Full name

Short Text LOUISE LOW

Q7 Suburb

Select Box Wigram

Q8 Which aspect of the project do you want to provide feedback on?

Multi Choice Tree planting plan

Q9 What do you like about the play space renewal plan?

Long Text

Q10 What don't you like about the play space renewal plan?

Long Text

Q11 Overall, do you support the plan for a playground renewal?

Multi Choice

Q12 Is there anything else the Community Board needs to consider?

Long Text

Q13 Supporting information

File Upload

Q14 How important are the following aspects in this park?

Matrix
Trees with autumn colouring - Neither important nor unimportant
Flowering trees - Neither important nor unimportant
Trees attracting birds and insects - Important
Climbable trees / trees to play in - Neither important nor unimportant
Trees providing enough shade - Neither important nor unimportant
Native trees - Important

Q15 Which aspects (if any) are you concerned about in this park?

Multi Choice Other: Making the approach for paragliders more dangerous

Q16 Have we got this tree planting plan right?

Multi Choice Somewhat

Q17 Tell us why you feel this way

Long Text

Planned trees should be removed from our landing approach or planted as shorter species at the Southeast corner of the field.
I support the Canterbury Hang Gliding and Paragliding Club submission on the Barnett Park tree planting plan. Barnett Park is an important recreational paragliding site, with a enjoyable long glide and spectacular views out over the city and New Brighton.
The proposed plan creates risks to safety. It plants obstacles on our approach that may force low pilots to veer out over housing.
The proposed planting increases the chances of a crash landing, property damage and serious injury. Removing the trees from the landing zone will make the plan acceptable for safely paragliding at Barnett Park.
I support planting at Barnett Park if the needs of hang gliders and paragliders are met.

Q18 Is there anything else the Waihoru Spreydon-Cashmere-Heathcote Community Board needs to consider?

Long Text

Q19 Supporting information

File Upload

Q1 Are you responding:

Multi Choice As an individual

Q2 Name of organisation/business

Short Text

Q3 Your role

Short Text

Q4 Full name

Short Text Andy Sarratt

Q7 Suburb

Select Box Sydenham

Q8 Which aspect of the project do you want to provide feedback on?

Multi Choice Tree planting plan

Q9 What do you like about the play space renewal plan?

Long Text

Q10 What don't you like about the play space renewal plan?

Long Text

Q11 Overall, do you support the plan for a playground renewal?

Multi Choice

Q12 Is there anything else the Community Board needs to consider?

Long Text

Q13 Supporting information

File Upload

Q14 How important are the following aspects in this park?

Matrix
Trees with autumn colouring - Neither important nor unimportant
Flowering trees - Neither important nor unimportant
Trees attracting birds and insects - Important
Climbable trees / trees to play in - Neither important nor unimportant
Trees providing enough shade - Neither important nor unimportant
Native trees - Important

Q15 Which aspects (if any) are you concerned about in this park?

Multi Choice Other: Making the approach for paragliders more dangerous

Q16 Have we got this tree planting plan right?

Multi Choice Somewhat

Q17 Tell us why you feel this way

Long Text

Planned trees should be removed from our landing approach or planted as shorter species at the Southeast corner of the field.
I support the Canterbury Hang Gliding and Paragliding Club submission on the Barnett Park tree planting plan. Barnett Park is an important recreational paragliding site, with a enjoyable long glide and spectacular views out over the city and New Brighton.
The proposed plan creates risks to safety. It plants obstacles on our approach that may force low pilots to veer out over housing.
The proposed planting increases the chances of a crash landing, property damage and serious injury. Removing the trees from the landing zone will make the plan acceptable for safely paragliding at Barnett Park.
I support planting at Barnett Park if the needs of hang gliders and paragliders are met.

Q18 Is there anything else the Waihoru Spreydon-Cashmere-Heathcote Community Board needs to consider?

Long Text

Q19 Supporting information

File Upload

Q1 Are you responding:

Multi Choice As an individual

Q2 Name of organisation/business

Short Text

Q3 Your role

Short Text

Q4 Full name

Short Text Andrew Chinn

Q7 Suburb

Select Box Spreydon

Q8 Which aspect of the project do you want to provide feedback on?

Multi Choice Tree planting plan

Q9 What do you like about the play space renewal plan?

Long Text

Q10 What don't you like about the play space renewal plan?

Long Text

Q11 Overall, do you support the plan for a playground renewal?

Multi Choice

Q12 Is there anything else the Community Board needs to consider?

Long Text

Q13 Supporting information

File Upload

Q14 How important are the following aspects in this park?

Matrix
Trees with autumn colouring - Neither important nor unimportant
Flowering trees - Neither important nor unimportant
Trees attracting birds and insects - Neither important nor unimportant
Climbable trees / trees to play in - Neither important nor unimportant
Trees providing enough shade - Neither important nor unimportant
Native trees - Neither important nor unimportant

Q15 Which aspects (if any) are you concerned about in this park?

Multi Choice Other: Making the approach for paragliders landing in the park more dangerous

Q16 Have we got this tree planting plan right?

Multi Choice No

Q17 Tell us why you feel this way

Long Text

Planned trees should be removed from our landing approach or planted as shorter species at the Southeast corner of the field.
I support the Canterbury Hang Gliding and Paragliding Club submission on the Barnett Park tree planting plan. Barnett Park is an important recreational paragliding site, with a enjoyable long glide and spectacular views out over the city and New Brighton.
The proposed plan creates risks to safety. It plants obstacles on our approach that may force low pilots to veer out over housing.
The proposed planting increases the chances of a crash landing, property damage and serious injury. Removing the trees from the landing zone will make the plan acceptable for safely paragliding at Barnett Park.
I support planting at Barnett Park if the needs of hang gliders and paragliders are met.

Q18 Is there anything else the Waihoru Spreydon-Cashmere-Heathcote Community Board needs to consider?

Long Text

Above

Q19 Supporting information

File Upload

Q1 Are you responding:

Multi Choice As an individual

Q2 Name of organisation/business

Short Text

Q3 Your role

Short Text

Q4 Full name

Short Text Blair Quane

Q7 Suburb

Select Box Redcliffs

Q8 Which aspect of the project do you want to provide feedback on?

Multi Choice Play space renewal

Q9 What do you like about the play space renewal plan?

Long Text Great to see!

Q10 What don't you like about the play space renewal plan?

Long Text The noise emitting play equipment should not be allowed as the neighbors don't want annoying noise pollution. The equipment is great but just ditch the noise component

Q11 Overall, do you support the plan for a playground renewal?

Multi Choice Yes

Q12 Is there anything else the Community Board needs to consider?

Long Text

Q13 Supporting information

File Upload

Q14 How important are the following aspects in this park?

Matrix

Q15 Which aspects (if any) are you concerned about in this park?

Multi Choice

Q16 Have we got this tree planting plan right?

Multi Choice Yes

Q17 Tell us why you feel this way

Long Text

Q18 Is there anything else the Waihoru Spreydon-Cashmere-Heathcote Community Board needs to consider?

Long Text

Q19 Supporting information

File Upload

Q1 Are you responding:

Multi Choice As an individual

Q2 Name of organisation/business

Short Text

Q3 Your role

Short Text

Q4 Full name

Short Text Guillaume Vincent Frederic Payet

Q7 Suburb

Select Box Outside of Christchurch: Rolleston

Q8 Which aspect of the project do you want to provide feedback on?

Multi Choice Tree planting plan

Q9 What do you like about the play space renewal plan?

Long Text

Q10 What don't you like about the play space renewal plan?

Long Text

Q11 Overall, do you support the plan for a playground renewal?

Multi Choice

Q12 Is there anything else the Community Board needs to consider?

Long Text

Q13 Supporting information

File Upload

Q14 How important are the following aspects in this park?

Matrix
Trees with autumn colouring - Important
Flowering trees - Important
Trees attracting birds and insects - Important
Climbable trees / trees to play in - Important
Trees providing enough shade - Important
Native trees - Important

Q15 Which aspects (if any) are you concerned about in this park?

Multi Choice Other: Making the approach for paragliders more dangerous

Q16 Have we got this tree planting plan right?

Multi Choice No

Q17 Tell us why you feel this way

Long Text

Planned trees should be removed from our landing approach, or replaced with shorter species planted in the southeast corner of the field.

I support the Canterbury Hang Gliding and Paragliding Club's submission on the Barnett Park planting plan. Barnett Park is an important recreational paragliding site, offering a smooth, enjoyable glide and spectacular views across the city and out toward New Brighton.

As proposed, the planting plan introduces safety risks. It places obstacles directly on our approach path, which could force low pilots to divert over nearby houses.

These changes increase the likelihood of crash landings, property damage, and serious injury. Removing the trees from the landing zone would make the plan workable while keeping paragliding at Barnett Park safe.

I support planting at Barnett Park, provided the needs of hang gliders and paragliders are properly considered.

Q18 Is there anything else the Waihoru Spreydon-Cashmere-Heathcote Community Board needs to consider?

Long Text

Q19 Supporting information

File Upload

Q1 Are you responding:

Multi Choice As an individual

Q2 Name of organisation/business

Short Text

Q3 Your role

Short Text

Q4 Full name

Short Text Amy Vaughan

Q7 Suburb

Select Box Mt Pleasant

Q8 Which aspect of the project do you want to provide feedback on?

Multi Choice Tree planting plan

Q9 What do you like about the play space renewal plan?

Long Text

Q10 What don't you like about the play space renewal plan?

Long Text

Q11 Overall, do you support the plan for a playground renewal?

Multi Choice

Q12 Is there anything else the Community Board needs to consider?

Long Text

Q13 Supporting information

File Upload

Q14 How important are the following aspects in this park?

Matrix
Trees with autumn colouring - Not important
Flowering trees - Not important
Trees attracting birds and insects - Important
Climbable trees / trees to play in - Not important
Trees providing enough shade - Not important
Native trees - Important

Q15 Which aspects (if any) are you concerned about in this park?

Multi Choice
Loss of open spaces
Hazards (e.g. roots, falling branches)
Other: Making the approach for paragliders more dangerous

Q16 Have we got this tree planting plan right?

Multi Choice No

Q17 Tell us why you feel this way

Long Text
Planned trees create a hazard for our landing approach and should either be removed from the plan, or planted as shorter species at the southeast corner of the field to minimise impact to our approach path.
I support the Canterbury Hang Gliding and Paragliding Club submission on the Barnett Park tree planting plan. Barnett Park is an important recreational paragliding site, with a enjoyable long glide and spectacular views out over the city and New Brighton.
The proposed plan in its current state creates risk to safety by adding obstacles on our approach that could force low altitude pilots to veer out towards housing, and increases risk of crash landing, and serious injury.

Q18 Is there anything else the Waihoru Spreydon-Cashmere-Heathcote Community Board needs to consider?

Long Text
The plans here don't seem to be specific to native trees, which for the valleys and replanting efforts in reserves is undermining efforts being currently undertaken. While creating shade is somewhat important, so is replanting with appropriate species for the environment being planted which is NOT European/ American imports.
I also think its worth considering that efforts could be made to improve the biodiversity of urban areas by replacing pine trees and agapanthus with appropriate natives to encourage native insects and birds, environment for the return of Tui to the area.

Q19 Supporting information

File Upload

Q1 Are you responding:

Multi Choice As an individual

Q2 Name of organisation/business

Short Text

Q3 Your role

Short Text

Q4 Full name

Short Text Leanne Kennedy

Q7 Suburb

Select Box Moncks Bay

Q8 Which aspect of the project do you want to provide feedback on?

Multi Choice Tree planting plan

Q9 What do you like about the play space renewal plan?

Long Text

Q10 What don't you like about the play space renewal plan?

Long Text

Q11 Overall, do you support the plan for a playground renewal?

Multi Choice

Q12 Is there anything else the Community Board needs to consider?

Long Text

Q13 Supporting information

File Upload

Q14 How important are the following aspects in this park?

Matrix
Trees with autumn colouring - Neither important nor unimportant
Flowering trees - Neither important nor unimportant
Trees attracting birds and insects - Important
Climbable trees / trees to play in - Neither important nor unimportant
Trees providing enough shade - Neither important nor unimportant
Native trees - Important

Q15 Which aspects (if any) are you concerned about in this park?

Multi Choice
Too much shade
Loss of view
Hazards (e.g. roots, falling branches)
Loss of open spaces

Q16 Have we got this tree planting plan right?

Multi Choice Somewhat

Q17 Tell us why you feel this way

Long Text As advised to Toby and Daisy when they visited the neighbours on Tuesday 20th January, I am opposed to the trees being planted outside our property (#28 Wakatu) and along the fence lines of the properties that border onto Barnett Park. We want to retain as much sun as possible. We already have a walnut, 2 pohutakawas, a beech, 2 kowhai, numerous tree ferns and other native shrubbery on our property. Toby assured us the planting would not go ahead if we were not in favour of it. We appreciate that our concerns have been heard and will be upheld. Please ensure the relocation of the rubbish bin is to a position that is visible to people returning to the car park (so they can dump their rubbish in the correct place prior to leaving the park).

Q18 Is there anything else the Waihoru Spreydon-Cashmere-Heathcote Community Board needs to consider?

Long Text

Q19 Supporting information

File Upload

Q1 Are you responding:

Multi Choice As an individual

Q2 Name of organisation/business

Short Text

Q3 Your role

Short Text

Q4 Full name

Short Text Michael Crabtree

Q7 Suburb

Select Box Sumner

Q8 Which aspect of the project do you want to provide feedback on?

Multi Choice Play space renewal
Tree planting plan

Q9 What do you like about the play space renewal plan?

Long Text Great initiative needs a new look and facilities for the children who visit

Q10 What don't you like about the play space renewal plan?

Long Text Nil

Q11 Overall, do you support the plan for a playground renewal?

Multi Choice Yes

Q12 Is there anything else the Community Board needs to consider?

Long Text

Q13 Supporting information

File Upload

Q14 How important are the following aspects in this park?

Matrix Trees with autumn colouring - Important
Flowering trees - Important
Trees attracting birds and insects - Important
Climbable trees / trees to play in - Not important
Trees providing enough shade - Important
Native trees - Neither important nor unimportant

Q15 Which aspects (if any) are you concerned about in this park?

Multi Choice I don't have any concerns

Q16 Have we got this tree planting plan right?

Multi Choice Yes

Q17 Tell us why you feel this way

Long Text

Q18 Is there anything else the Waihoru Spreydon-Cashmere-Heathcote Community Board needs to consider?

Long Text No

Q19 Supporting information

File Upload

Q1 Are you responding:

Multi Choice As an individual

Q2 Name of organisation/business

Short Text

Q3 Your role

Short Text

Q4 Full name

Short Text Ele England

Q7 Suburb

Select Box Redcliffs

Q8 Which aspect of the project do you want to provide feedback on?

Multi Choice Play space renewal

Q9 What do you like about the play space renewal plan?

Long Text I really like the new play ideas and that you have asked the local school children.

Q10 What don't you like about the play space renewal plan?

Long Text It appears you are removing the swings that cater for our under 5's. I would like to see some 'safe' under 5 elements, yes you have the nature and climbing spaces, little people love to feel the wind in their hair and faces.

Q11 Overall, do you support the plan for a playground renewal?

Multi Choice Yes

Q12 Is there anything else the Community Board needs to consider?

Long Text

Q13 Supporting information

File Upload

Q14 How important are the following aspects in this park?

Matrix

Q15 Which aspects (if any) are you concerned about in this park?

Multi Choice

Q16 Have we got this tree planting plan right?

Multi Choice Somewhat

Q17 Tell us why you feel this way

Long Text I can't tell if this planting impacts on the sports fields.

Q18 Is there anything else the Waihoru Spreydon-Cashmere-Heathcote Community Board needs to consider?

Long Text

Q19 Supporting information

File Upload

Q1 Are you responding:

Multi Choice As an individual

Q2 Name of organisation/business

Short Text

Q3 Your role

Short Text

Q4 Full name

Short Text Luke Mahon

Q7 Suburb

Select Box Moncks Bay

Q8 Which aspect of the project do you want to provide feedback on?

Multi Choice Tree planting plan

Q9 What do you like about the play space renewal plan?

Long Text

Q10 What don't you like about the play space renewal plan?

Long Text

Q11 Overall, do you support the plan for a playground renewal?

Multi Choice

Q12 Is there anything else the Community Board needs to consider?

Long Text

Q13 Supporting information

File Upload

Q14 How important are the following aspects in this park?

Matrix
Trees with autumn colouring - Not important
Flowering trees - Not important
Trees attracting birds and insects - Important
Climbable trees / trees to play in - Not important
Trees providing enough shade - Neither important nor unimportant
Native trees - Important

Q15 Which aspects (if any) are you concerned about in this park?

Multi Choice
Loss of view
Too much shade
Hazards (e.g. roots, falling branches)

Q16 Have we got this tree planting plan right?

Multi Choice Somewhat

Q17 Tell us why you feel this way

Long Text

It is great that there is thought being made towards planting trees that will increase cover into the future and make sure that existing trees are replaced by infilled newer trees. Adding extra trees to enhance what is already there is important especially around the carpark area and the northern and southern ends of the sports fields. It is important not to cut down the existing trees at the southern end of the fields but rather just infill and add more in these areas. The western side of the sports fields has a good coverage of trees and adding more this side as shade for people using the sports field would have minimal impact on residents on the eastern side but would add significantly to the enjoyment of sports field users. At present this is the side where teams and supporters congregate anyway as it is away from the houses on the eastern side and more amenable to privacy and people gathering using the existing shade. There is a natural small terrace along this side that is not part of the sports fields per se which would also be a good place to add more small trees. In planting these trees however any future path along the western side needs to be thought about and factored in.

Along the eastern side where the houses are my main concern is that any planted trees do not have a negative impact on the swale either through their root systems or debris and branches falling into this area. When the swale does fill up it flows very fast and any trapped debris in the drains by the toilet block, or elsewhere, can have an adverse effect on its usefulness. I think it is important that any trees planted on the eastern side, or south eastern corner of the park take this into account however given these concerns they are best avoided. Trees, if any, along here should be no more than "small" but even small trees would still cause shade and view issues for many residents with frontages onto the park. Therefore, they should be avoided along this boundary with more emphasis put on increasing tree cover and shade at the western, southern and northern (including carpark) areas.

Q18 Is there anything else the Waihoru Spreydon-Cashmere-Heathcote Community Board needs to consider?

Long Text

Q19 Supporting information

File Upload

Q1 Are you responding:

Multi Choice As an individual

Q2 Name of organisation/business

Short Text

Q3 Your role

Short Text

Q4 Full name

Short Text Hugh Wilson

Q7 Suburb

Select Box Redcliffs

Q8 Which aspect of the project do you want to provide feedback on?

Multi Choice Play space renewal

Q9 What do you like about the play space renewal plan?

Long Text I like that the equipment will be getting a refresh and that the access from Main Rd will be improved for people walking. I like that the school kids from Redcliffs were involved in the initial development of the plans. The shade for the table will also be great.=

Q10 What don't you like about the play space renewal plan?

Long Text I have two main ideas/concerns:
1. Inclusion of te Ao Māori - it would be great to have more inclusion of māori and māori history in the area. The Goga pit is great but māori have traditional elements/games too that could be included.
2a. Swings - we use the swings there a lot. I see that there are plans for swings on the trees but please ensure there enough swings for younger kids too. Currently there are 4 swings in the set, ideally the number of swings would remain the same.
2b. Swings - the old swing from the Gap Filler project is currently being stored in the old New World car park just down Main Rd. Is there a way this could be installed at Barnett Park with signage etc. to reflect the importance this played in the post quake rebuild?

I have a couple of smaller concerns that may have been considered but want to raise them incase.
1. Younger tamariki - how were kids younger than school aged considered in these designs? Ensuring this remains a fun space for kids 1 - 4 is important.
2. Maintenance - it looks like the Goga pit might need a reasonable amount of maintainance. Just want to ensure this has been accounted for in the planning.

Q11 Overall, do you support the plan for a playground renewal?

Multi Choice Yes

Q12 Is there anything else the Community Board needs to consider?

Long Text

Q13 Supporting information

File Upload

Q14 How important are the following aspects in this park?

Matrix

Q15 Which aspects (if any) are you concerned about in this park?

Multi Choice

Q16 Have we got this tree planting plan right?

Multi Choice Yes

Q17 Tell us why you feel this way

Long Text

Q18 Is there anything else the Waihoru Spreydon-Cashmere-Heathcote Community Board needs to consider?

Long Text

Q19 Supporting information

File Upload

Q1 Are you responding:

Multi Choice As an individual

Q2 Name of organisation/business

Short Text

Q3 Your role

Short Text

Q4 Full name

Short Text Narada Casiello

Q7 Suburb

Select Box Moncks Bay

Q8 Which aspect of the project do you want to provide feedback on?

Multi Choice Tree planting plan

Q9 What do you like about the play space renewal plan?

Long Text

Q10 What don't you like about the play space renewal plan?

Long Text

Q11 Overall, do you support the plan for a playground renewal?

Multi Choice

Q12 Is there anything else the Community Board needs to consider?

Long Text

Q13 Supporting information

File Upload

Q14 How important are the following aspects in this park?

Matrix
Trees with autumn colouring - Neither important nor unimportant
Flowering trees - Neither important nor unimportant
Trees attracting birds and insects - Not important
Climbable trees / trees to play in - Not important
Trees providing enough shade - Not important
Native trees - Important

Q15 Which aspects (if any) are you concerned about in this park?

Multi Choice
Other: Myself & my husband do not agree with your proposal for additional trees in on the residential side of the park. There are plentiful trees on the other side providing shade and habitat. The trees will be close to the sports pitches. The proposed planting site of the many trees will also be behind lots of the houses some of which are situated close to the boundary. We have more than a dozen trees on our property plus a fernery, we get lots of birds, bees and other insects in our garden. It would be great to have more trees at the far end of the park away from the houses also some additional seating / picnic benches would be great too.
Loss of view

Q16 Have we got this tree planting plan right?

Multi Choice No

Q17 Tell us why you feel this way

Long Text
Myself & my husband do not agree with your proposal for additional trees in on the residential side of the park. There are plentiful trees on the other side providing shade and habitat. The trees will be close to the sports pitches. The proposed planting site of the many trees will also be behind lots of the houses some of which are situated close to the boundary. We have more than a dozen trees on our property plus a fernery, we get lots of birds, bees and other insects in our garden. It would be great to have more trees at the far end of the park away from the houses also some additional seating / picnic benches would be great too.

Q18 Is there anything else the Waihoru Spreydon-Cashmere-Heathcote Community Board needs to consider?

Long Text

Q19 Supporting information

File Upload

Q1 Are you responding:

Multi Choice As an individual

Q2 Name of organisation/business

Short Text

Q3 Your role

Short Text

Q4 Full name

Short Text liz barrie

Q7 Suburb

Select Box Moncks Bay

Q8 Which aspect of the project do you want to provide feedback on?

Multi Choice Tree planting plan

Q9 What do you like about the play space renewal plan?

Long Text

Q10 What don't you like about the play space renewal plan?

Long Text

Q11 Overall, do you support the plan for a playground renewal?

Multi Choice

Q12 Is there anything else the Community Board needs to consider?

Long Text

Q13 Supporting information

File Upload

Q14 How important are the following aspects in this park?

Matrix
Trees with autumn colouring - Important
Flowering trees - Neither important nor unimportant
Trees attracting birds and insects - Important
Climbable trees / trees to play in - Not important
Trees providing enough shade - Important
Native trees - Important

Q15 Which aspects (if any) are you concerned about in this park?

Multi Choice I don't have any concerns

Q16 Have we got this tree planting plan right?

Multi Choice Yes

Q17 Tell us why you feel this way

Long Text

Q18 Is there anything else the Waihoru Spreydon-Cashmere-Heathcote Community Board needs to consider?

Long Text

Q19 Supporting information

File Upload

Q1 Are you responding:

Multi Choice As an individual

Q2 Name of organisation/business

Short Text

Q3 Your role

Short Text

Q4 Full name

Short Text Michele Laing

Q7 Suburb

Select Box Redcliffs

Q8 Which aspect of the project do you want to provide feedback on?

Multi Choice Tree planting plan

Q9 What do you like about the play space renewal plan?

Long Text

Q10 What don't you like about the play space renewal plan?

Long Text

Q11 Overall, do you support the plan for a playground renewal?

Multi Choice

Q12 Is there anything else the Community Board needs to consider?

Long Text

Q13 Supporting information

File Upload

Q14 How important are the following aspects in this park?

Matrix
Trees with autumn colouring - Not important
Flowering trees - Neither important nor unimportant
Trees attracting birds and insects - Important
Climbable trees / trees to play in - Important
Trees providing enough shade - Important
Native trees - Important

Q15 Which aspects (if any) are you concerned about in this park?

Multi Choice Other: the more tree coverage the better, we lack shade in summer, biodiversity and habitats for birds and insects is lacking

Q16 Have we got this tree planting plan right?

Multi Choice Yes

Q17 Tell us why you feel this way

Long Text

Q18 Is there anything else the Waihoru Spreydon-Cashmere-Heathcote Community Board needs to consider?

Long Text the more tree coverage the better,
we lack shade in summer,
biodiversity and habitats for birds and insects is lacking
tall trees in the neighbourhood are lacking

Q19 Supporting information

File Upload

Q1 Are you responding:

Multi Choice As an individual

Q2 Name of organisation/business

Short Text

Q3 Your role

Short Text

Q4 Full name

Short Text Michael Robinson

Q7 Suburb

Select Box Avondale

Q8 Which aspect of the project do you want to provide feedback on?

Multi Choice Play space renewal
Tree planting plan

Q9 What do you like about the play space renewal plan?

Long Text It's a good plan. Very much needed.

Q10 What don't you like about the play space renewal plan?

Long Text Possibly more shade sail. Bring shaded areas closer to play ground

Q11 Overall, do you support the plan for a playground renewal?

Multi Choice Yes

Q12 Is there anything else the Community Board needs to consider?

Long Text

Q13 Supporting information

File Upload

Q14 How important are the following aspects in this park?

Matrix
Trees with autumn colouring - Not important
Flowering trees - Not important
Trees attracting birds and insects - Important
Climbable trees / trees to play in - Neither important nor unimportant
Trees providing enough shade - Important
Native trees - Important

Q15 Which aspects (if any) are you concerned about in this park?

Multi Choice I don't have any concerns

Q16 Have we got this tree planting plan right?

Multi Choice Somewhat

Q17 Tell us why you feel this way

Long Text Possibly more trees on the cave terrace side

Q18 Is there anything else the Waihoru Spreydon-Cashmere-Heathcote Community Board needs to consider?

Long Text More smart rubbish bins and regular emptying

Q19 Supporting information

File Upload

Q1 Are you responding:

Multi Choice As an individual

Q2 Name of organisation/business

Short Text

Q3 Your role

Short Text

Q4 Full name

Short Text Claire Morillas

Q7 Suburb

Select Box Moncks Bay

Q8 Which aspect of the project do you want to provide feedback on?

Multi Choice Play space renewal

Q9 What do you like about the play space renewal plan?

Long Text Renewal of very old current equipment

Q10 What don't you like about the play space renewal plan?

Long Text Unsure if the new equipment will give same amount of enjoyment to kids, would like to see similar things to current set up but with improvements and additions

Q11 Overall, do you support the plan for a playground renewal?

Multi Choice Yes

Q12 Is there anything else the Community Board needs to consider?

Long Text

Q13 Supporting information

File Upload

Q14 How important are the following aspects in this park?

Matrix

Q15 Which aspects (if any) are you concerned about in this park?

Multi Choice

Q16 Have we got this tree planting plan right?

Multi Choice Don't know / not sure

Q17 Tell us why you feel this way

Long Text

Q18 Is there anything else the Waihoru Spreydon-Cashmere-Heathcote Community Board needs to consider?

Long Text

Q19 Supporting information

File Upload

Q1 Are you responding:

Multi Choice As an individual

Q2 Name of organisation/business

Short Text

Q3 Your role

Short Text

Q4 Full name

Short Text LANCE SIEBUHR

Q7 Suburb

Select Box Redcliffs

Q8 Which aspect of the project do you want to provide feedback on?

Multi Choice Play space renewal
Tree planting plan

Q9 What do you like about the play space renewal plan?

Long Text It's going to be great

Q10 What don't you like about the play space renewal plan?

Long Text

Q11 Overall, do you support the plan for a playground renewal?

Multi Choice Yes

Q12 Is there anything else the Community Board needs to consider?

Long Text

Q13 Supporting information

File Upload

Q14 How important are the following aspects in this park?

Matrix
Trees with autumn colouring - Not important
Flowering trees - Not important
Trees attracting birds and insects - Important
Climbable trees / trees to play in - Not important
Trees providing enough shade - Important
Native trees - Neither important nor unimportant

Q15 Which aspects (if any) are you concerned about in this park?

Multi Choice I don't have any concerns

Q16 Have we got this tree planting plan right?

Multi Choice Yes

Q17 Tell us why you feel this way

Long Text

Q18 Is there anything else the Waihoru Spreydon-Cashmere-Heathcote Community Board needs to consider?

Long Text

Q19 Supporting information

File Upload

Q1 Are you responding:

Multi Choice As an individual

Q2 Name of organisation/business

Short Text

Q3 Your role

Short Text

Q4 Full name

Short Text Charlotte Sumner

Q7 Suburb

Select Box Moncks Bay

Q8 Which aspect of the project do you want to provide feedback on?

Multi Choice Play space renewal

Q9 What do you like about the play space renewal plan?

Long Text It's now also catering towards the preschool children. Currently the park isn't that easy for younger children and with a preschool that backs onto the park and another down the road. We have so many families with young children living down ours and BayView Road so it's just great to bring our community together and creating a safe space for children to play.

Q10 What don't you like about the play space renewal plan?

Long Text

Q11 Overall, do you support the plan for a playground renewal?

Multi Choice Yes

Q12 Is there anything else the Community Board needs to consider?

Long Text Just as long as it can cater to a range of ages from toddlers up is great and allows for many users to enjoy the park

Q13 Supporting information

File Upload

Q14 How important are the following aspects in this park?

Matrix

Q15 Which aspects (if any) are you concerned about in this park?

Multi Choice

Q16 Have we got this tree planting plan right?

Multi Choice Yes

Q17 Tell us why you feel this way

Long Text

Q18 Is there anything else the Waihoru Spreydon-Cashmere-Heathcote Community Board needs to consider?

Long Text

Q19 Supporting information

File Upload

Q1 Are you responding:

Multi Choice As an individual

Q2 Name of organisation/business

Short Text

Q3 Your role

Short Text

Q4 Full name

Short Text Matthew Love-Smith

Q7 Suburb

Select Box Moncks Bay

Q8 Which aspect of the project do you want to provide feedback on?

Multi Choice Tree planting plan

Q9 What do you like about the play space renewal plan?

Long Text

Q10 What don't you like about the play space renewal plan?

Long Text

Q11 Overall, do you support the plan for a playground renewal?

Multi Choice

Q12 Is there anything else the Community Board needs to consider?

Long Text

Q13 Supporting information

File Upload

Q14 How important are the following aspects in this park?

Matrix
Trees with autumn colouring - Important
Flowering trees - Important
Trees attracting birds and insects - Important
Climbable trees / trees to play in - Not important
Trees providing enough shade - Not important
Native trees - Not important

Q15 Which aspects (if any) are you concerned about in this park?

Multi Choice Too much shade

Q16 Have we got this tree planting plan right?

Multi Choice No

Q17 Tell us why you feel this way

Long Text I do not understand what benefit is created by planting trees on the Wakatu Avenue side of the Park, close to residential property. My garden and property will be in shade of the proposed tree, during the important Winter months when our need to benefit from the light and warmth of the sun is at its highest. As we are back in the valley the sunlight is at a premium during the winter and the current plan will see our sunlight diminished even further. Please can you redesign the plan taking this into account.

Q18 Is there anything else the Waihoru Spreydon-Cashmere-Heathcote Community Board needs to consider?

Long Text The needs of local residents and the benefit of sunlight during winter months.

Q19 Supporting information

File Upload

Q1 Are you responding:

Multi Choice As an individual

Q2 Name of organisation/business

Short Text

Q3 Your role

Short Text

Q4 Full name

Short Text Tina Harrison

Q7 Suburb

Select Box Scarborough

Q8 Which aspect of the project do you want to provide feedback on?

Multi Choice Play space renewal

Q9 What do you like about the play space renewal plan?

Long Text Love the variety of equipment which will suit different ages and developmental stages.

Q10 What don't you like about the play space renewal plan?

Long Text More accessible equipment please. Would it be possible to add a wheelchair swing or some accessible equipment for children with disabilities? This would ensure all children could use it.

Q11 Overall, do you support the plan for a playground renewal?

Multi Choice Somewhat

Q12 Is there anything else the Community Board needs to consider?

Long Text When doing the tree planting consider putting in a sensory trail garden. These are wonderful for children with sensory needs and blind / low vision.

Fencing - fully fence the playground as it's a busy road out front of the playground and often the drive way to the back of the carpark and childcare is busy.

Q13 Supporting information

File Upload

Q14 How important are the following aspects in this park?

Matrix

Q15 Which aspects (if any) are you concerned about in this park?

Multi Choice

Q16 Have we got this tree planting plan right?

Multi Choice Somewhat

Q17 Tell us why you feel this way

Long Text Sensory planting - plants and fragrant trees for a sensory walk.

Q18 Is there anything else the Waihoru Spreydon-Cashmere-Heathcote Community Board needs to consider?

Long Text

Q19 Supporting information

File Upload

Q1 Are you responding:

Multi Choice As an individual

Q2 Name of organisation/business

Short Text

Q3 Your role

Short Text

Q4 Full name

Short Text Lorraine Mcherron

Q7 Suburb

Select Box Heathcote Valley

Q8 Which aspect of the project do you want to provide feedback on?

Multi Choice Tree planting plan

Q9 What do you like about the play space renewal plan?

Long Text

Q10 What don't you like about the play space renewal plan?

Long Text

Q11 Overall, do you support the plan for a playground renewal?

Multi Choice

Q12 Is there anything else the Community Board needs to consider?

Long Text

Q13 Supporting information

File Upload

Q14 How important are the following aspects in this park?

Matrix
Trees with autumn colouring - Important
Flowering trees - Neither important nor unimportant
Trees attracting birds and insects - Neither important nor unimportant
Climbable trees / trees to play in - Not important
Trees providing enough shade - Important
Native trees - Important

Q15 Which aspects (if any) are you concerned about in this park?

Multi Choice Loss of view

Q16 Have we got this tree planting plan right?

Multi Choice Somewhat

Q17 Tell us why you feel this way

Long Text

Suggest you may want to rethink the planting of trees in front of parking area facing the football field. This parking area is often used by people sitting in their car watching the kids at footy practise or games in winter. Trees between the carpark and field would impede views. As a grandma of two players and regularly take my grandsons to the field I would be only one of some who would be impacted.

Q18 Is there anything else the Waihoru Spreydon-Cashmere-Heathcote Community Board needs to consider?

Long Text

Q19 Supporting information

File Upload

Q1 Are you responding:

Multi Choice As an individual

Q2 Name of organisation/business

Short Text

Q3 Your role

Short Text

Q4 Full name

Short Text Joanna Beadle

Q7 Suburb

Select Box Redcliffs

Q8 Which aspect of the project do you want to provide feedback on?

Multi Choice Play space renewal

Q9 What do you like about the play space renewal plan?

Long Text I don't really care about this play space personally, what I wanted to say is that I think the path along the side of the sports field is completely unnecessary and ruins the green space. People are perfectly happy to walk on the grass to the tracks at the back.

Q10 What don't you like about the play space renewal plan?

Long Text I hate the idea of a concrete pathway in the sports field area

Q11 Overall, do you support the plan for a playground renewal?

Multi Choice No

Q12 Is there anything else the Community Board needs to consider?

Long Text

Q13 Supporting information

File Upload

Q14 How important are the following aspects in this park?

Matrix

Q15 Which aspects (if any) are you concerned about in this park?

Multi Choice

Q16 Have we got this tree planting plan right?

Multi Choice Don't know / not sure

Q17 Tell us why you feel this way

Long Text

Q18 Is there anything else the Waihoru Spreydon-Cashmere-Heathcote Community Board needs to consider?

Long Text

Q19 Supporting information

File Upload