

Waimāero Fendalton-Waimairi-Harewood
Community Board
Plan 2026–28



Lake Roto Kohatu, Harewood

Contents

From the Chair.....	3
About community boards and our plans.....	3
Strengthening Communities Together Strategy.....	4
Waimāero Fendalton-Waimairi-Harewood Board area.....	5
Key statistics.....	6
Our vision.....	7
Our priorities.....	8
Community board funding.....	14
Your community board members.....	15



From the Chair



On behalf of the Waimāero Fendalton-Waimairi-Harewood Community Board, I am proud to present our 2026-2028 Community Board Plan.

A community board plan is a key document that outlines our vision for the local community and helps guide the board in prioritising its work over the next three years.

We see this plan as a “living document” that may evolve over time as projects are completed or as changing circumstances lead to adjustments in our priorities.

The priorities identified in this plan reflect the issues raised by residents, community groups, and Christchurch City Council staff.

I would like to take this opportunity to thank everyone who took the time to provide feedback on our draft priorities. Please be assured that we have listened to your suggestions, and while they may not all appear on our priority list, we will continue to advocate for them to be considered in the Council’s planning processes where appropriate.

Our vision for this community is for it to thrive environmentally, socially, and economically, while recognising the range of risks and challenges we face today, from rising living costs to the impacts of climate change. Balancing priorities is therefore essential, as is ensuring your money is spent responsibly.

We look forward to working in partnership with our local community to achieve the vision we share for this area.



Jason Middlemiss, Chairperson

About community boards and our plans

Community boards carry out functions and exercise powers delegated to them by their councils.

There are six community boards within the Christchurch City Council area.

Local body elections for community board members and councillors are held every three years.

The community board’s main role is to:

- Represent and advocate for the interests of its community.
- Consider and report on all matters referred to it by the council, or any matter of interest to the board.
- Maintain an overview of council services in the community.

- Prepare an annual submission to the council for expenditure within the community.
- Communicate with community organisations and special interest groups within the community.

Community Board Plans

Community board plans are developed every three years and outline the board’s key priorities for their elected term. They also indicate how the board will work in partnership with the local community to achieve the council’s community outcomes.

A key part of the development of the plan is engagement with the local community and key stakeholders to ensure that the board’s priorities reflect the needs and desires of local residents, community groups and businesses in our board area.

Te Haumako Te Whitingia

Strengthening Communities Together Strategy

In 2022, the Council reflected on the 2007 Strengthening Communities Strategy, which made it clear that people value diversity, collaboration, being connected and building capability for the future.

We cannot address the many complex social issues that face our city on our own but can help to develop and nurture networks and bring resources and people together so that collectively we can achieve more.

We know that communities want us to focus more on impact and outcomes, with more emphasis on collaboration and partnership. They want transparency and accountability with measurable goals and actions so we know what's working and what isn't.

We believe this refreshed strategy delivers on this.

The strategy has been organised around four pillars that set out the Council's commitment to working alongside the community over the next ten years.

Strategy Pillars

Te Tāngata People

Actively promote a culture of equity by valuing diversity and fostering inclusion across communities and generations.

Whenua Place

Support and help build connections between communities to foster a sense of local identity, shared experience and stewardship.

Te Mahi Participation

Residents and groups in the wider community are socially and actively engaged and able to initiate and influence decisions affecting their lives.

Te Takatū Preparedness

People feel safe in their communities and neighbourhoods and work together to understand, adapt and thrive in the context of change and disruption.

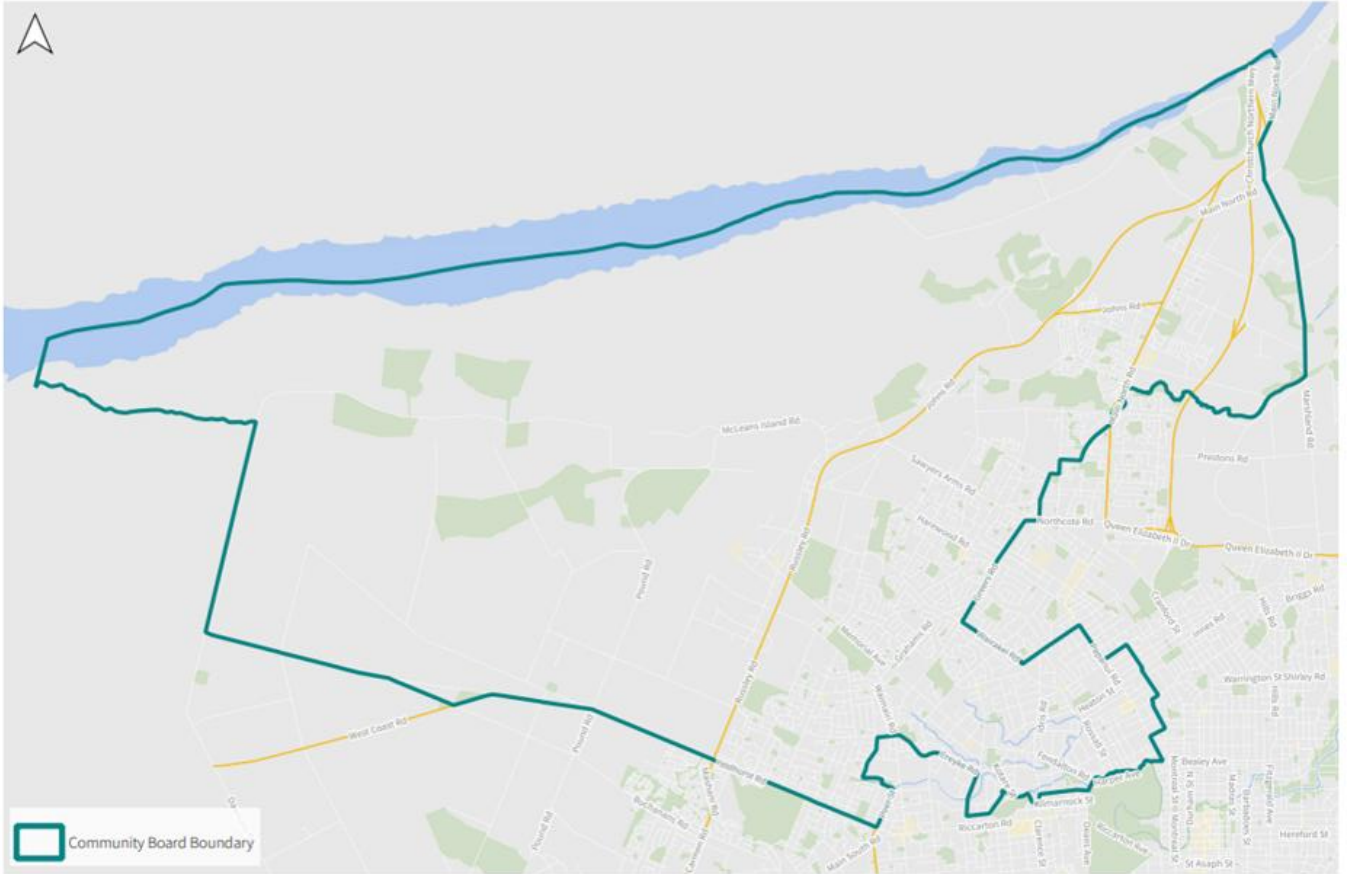
The Waimāero Fendalton-Waimairi-Harewood Community Board is committed to working alongside our local communities to achieve the goals of the strategy. The four pillars above guide us in our decision-making and advocacy on behalf of our residents.

You can view a copy of the Strengthening Communities Together Strategy on the Council's website [here](#).

(ccc.govt.nz/the-council/plans-strategies-policies-and-bylaws/strategies/strengthening-communities-together-strategy)



Waimāero Fendalton-Waimairi-Harewood Community Board area



2022 Christchurch City Council Local Government Elections |
Waimāero Fendalton-Waimairi-Harewood Community Board



Key statistics



This section provides an overview of key statistics for the Waimāero Fendalton-Waimairi-Harewood Community Board area. Please note all figures are sourced from the 2023 Census of Population and Dwellings.



Population:
74,579

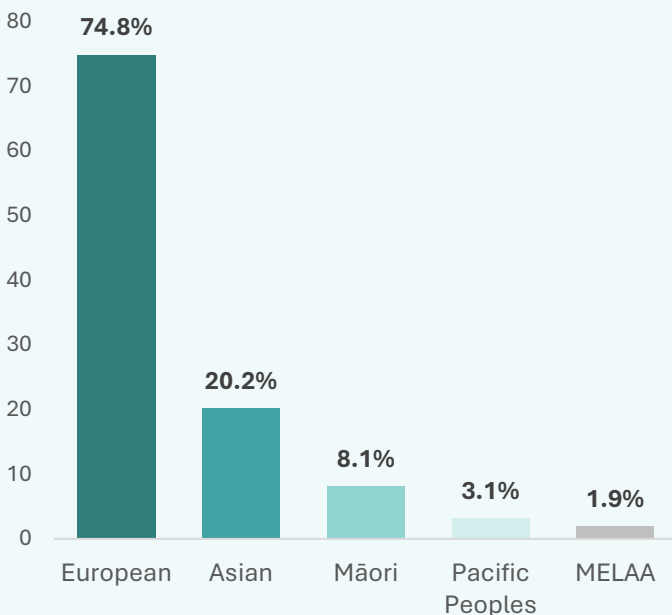


Median age:
40 years



Median personal income:
\$41,000

Ethnicity



Occupied private dwellings:
28,440



Unoccupied private dwellings:
2,028



Household access to internet:
93.1%



Rented dwellings:
28.9%



Born overseas:
29.3%

Key Facilities and Amenities

- 2 Council libraries: Fendalton, Ōrauwhata: Bishopdale Library
- 1 Council service centre: Fendalton
- 165 Council parks (670 hectares)
- 31 schools: 19 primary, 3 intermediate, 5 secondary, 3 composite (Year 1-13), 1 special
- 2 private hospitals: St George's, Nurse Maude
- 1 charity hospital: Canterbury Charity Hospital
- Approximately 9,798 businesses employing 38,992 people (Feb 2024)
- Christchurch Airport
- Multiple major sport and recreation amenities: Jellie Park Rec and Sport Centre, McLeans Island, Christchurch Football Academy, The Groynes, Lake Roto Kohatu, Nunweek Park, Sheldon Park
- Main shopping centres and precincts: Avonhead Mall, Bishopdale Mall, Fendalton Mall, Ilam/Clyde, Merivale Mall
- Mall, Spitfire Square (airport), Wairakei/Greers, Northwood Supa Centre/Belfast
- Major tourist attractions: Orana Wildlife Park, Willowbank Wildlife Reserve, Antarctic Centre

Our vision



The Waimāero Fendalton-Waimairi-Harewood area has a strong local identity that is vibrant, inclusive and highly valued by all.



Vision statements

- The views, interests, needs and aspirations of residents are effectively represented.
- The Community Board has an open and transparent decision-making process that residents can understand and engage in.
- Initiatives to protect the local environment will be developed and supported, including the protection of our local waterways, increasing tree-canopy and retaining and enhancing the natural character of the area.
- The Board area has a safe and sustainable transport network which links with the wider Canterbury network. This includes advocating for improvements to infrastructure that create efficiencies for all road users e.g. right-turning arrows, enabling better traffic flow through busy intersections.
- Residents have inclusive access to parks and greenspaces for recreational activities.
- A range of social and recreational activities are provided, which strengthen community wellbeing and result in residents feeling safe and connected in their communities.
- Local initiatives and plans will be developed with our communities to prepare and respond to emergencies and impacts of our changing climate.

In addition to our priority projects identified in this plan, the board will continue work with our community and Council staff to address issues as they arise throughout the Board term.

We will also continue to advocate strongly through submissions to the Council's Annual Plan and Long Term Plan for the following:

- Maintaining rates at an affordable level
- Chlorine-free water supply
- Priority focus on road, footpath and park maintenance

Our priorities

Safety improvements at the Withells Road/Yaldhurst Road intersection

Why this matters

Withells Road is an important local connection between SH73/Yaldhurst Road and the residential areas to the north of the corridor. The intersection experiences high traffic volumes and operates within a constrained environment, which increases safety and operational risks.

The primary safety concern at this intersection relates to right turn movements both into and out of Withells Road, which have a higher likelihood of resulting in severe crashes.

What the board will do:

- Work alongside Council staff and NZTA to advocate for immediate safety improvements to be undertaken at this intersection as an interim measure until funding is available for a long-term solution.
- Advocate on behalf of the community and in partnership with the local Member of Parliament for funding to be prioritised in the National Land Transport Programme (NLTP) 2027-30 for traffic lights to be installed at this intersection.
- Ensure that the views of the local residents and road users are considered when considering options for safety improvements.
- Advocate to NZTA for a wider corridor review of Yaldhurst Road, including the Brodie Street intersection, safe pedestrian and cycling facilities, and provision of safe u-turn bays.

We will measure our success by:

- Immediate interim safety improvements are investigated and implemented at this intersection.
- Funding is allocated in the NLTP 2027-30 for a long-term solution to address the safety of this intersection, with the preference being the installation of traffic lights (subject to safety audit and community feedback).

Safety improvements for the pedestrian crossing at Avonhead School - Rakipaoa on Avonhead Road

Why this matters

Our Community Board has received a request from Avonhead School - Rakipaoa for safety improvements at the pedestrian crossing outside their school, with their preference being the installation of a signalised pedestrian crossing.

There are concerns related to the increased traffic volumes on Avonhead Road which often become congested and causes traffic to back-up around the vicinity of the crossing. When this occurs on one side of the road, drivers travelling in the opposite lane frequently do not see the road patrol signs and continue through the crossing at speed. This creates an extremely hazardous situation for their students, families, staff and residents who rely on this crossing daily.

What the board will do:

- Advocate for Council staff to investigate a range of safety improvement options at the crossing point, including the feasibility of a signalised crossing.

We will measure our success by:

- Safety options investigated and implemented at the pedestrian crossing at Avonhead School - Rakipaoa.

Our priorities

Improvements to facilities at Burnside Park

Why this matters

Burnside Park is a vital community hub supporting sport, recreation, health, and wellbeing for people of all ages, serving sports clubs, families, young people, and other community groups. Existing club facilities are outdated, limiting accessibility and inclusivity, particularly for women, girls, and those with limited mobility. The current condition and location of the public toilets discourage use.

Recent feedback from nearly 900 residents, including 500 young people, highlights the importance of safe, accessible, and welcoming outdoor spaces, with many expressing a desire to have more input into how these areas are developed, making the upcoming playground renewal a timely opportunity for engagement.

Investing in fit-for-purpose, accessible, and sustainable facilities at Burnside Park will support long-term community resilience, enhance inclusivity, and ensure the park continues to thrive as a shared hub for all users.

What the board will do:

- Work collaboratively with Council staff, sports clubs, and other key stakeholders to facilitate collaborative planning and support a feasibility assessment for improved and potentially shared, fit-for-purpose facilities at Burnside Park, advocating for accessible and inclusive design, ensuring long-term sustainability, and creating a hub of facilities that can be used by both clubs and the wider community.
- Advocate for the inclusion of park users' views, especially young people, in planning the new youth play space and broader park improvements.
- Support investigation and assessment of options to improve the existing public toilet facilities at Burnside Park.

We will measure our success by:

- Feasibility assessment by park user groups is supported, including recommendations for accessible and inclusive design
- Collaborative planning between Council, sports clubs, and other park users is established, ensuring facilities support both club activities and wider community use.
- Youth perspectives are sought and considered in the planning and design of the new youth play space and broader park improvements.
- Options for improving the existing public toilet facilities are investigated and reported.



Burnside Park

Our priorities

Community Traffic Safety Committee - Merivale pilot project

Why this matters

This project responds directly to ongoing safety concerns around schools in Merivale, including congestion, speeding, unsafe drop-off behaviour, and increasing traffic volumes from housing intensification.

This pilot project seeks to establish a structured, community-led committee to empower parents, students, residents, and schools to work collaboratively to develop practical, locally informed solutions.

The pilot aims improve safety for all road users while feeding into longer-term transport planning and making the neighbourhood safer and more liveable for everyone.

What the board will do:

- Work with key local stakeholders to establish a Merivale Community Traffic Safety Committee.
- Facilitate committee meetings, request advice, data and technical input from Council staff, escalate issues identified and support the alignment of the committee's work with existing Council transport and safety programmes.
- Advocate for identified infrastructure improvements through Council processes/plans.

We will measure our success by:

- A reduction in complaints received regarding safety conditions during, before and after school, including reduced traffic incidents, better driver behaviour, and fewer complaints.
- Regular attendance at committee meetings by participants, positive feedback from stakeholders and ideas are considered/actioned by the committee.
- An evaluation of the pilot project will be undertaken after 18 months (or earlier if requested).

Elmwood Park playground renewal

Why this matters

Elmwood Park is a local heritage park in the heart of Merivale. The park is used by various sporting codes and is very popular with local residents.

The park contains a children's playground which is highly used by local families and visitors to the park when sports games are happening.

Our Board has received very clear messages from our local community about the need for the playground to be updated.

The renewal of the playground is currently scheduled for 2029 but the Board and the local community would like to see this happen sooner.

What the board will do:

- Advocate to Council through its submission to the Long Term Plan for the Elmwood Park playground renewal to be brought forward to the 2027 financial year.

We will measure our success by:

- Elmwood Park playground renewed earlier than FY 2029.

Our priorities

Strengthening Community Connections in Bryndwr

Why this matters

Bryndwr is a diverse and evolving community, home to long-term residents, newcomers, families, older adults, and culturally diverse communities. The suburb includes both well-established households and areas facing socio-economic challenges, with a high proportion of social housing and higher of deprivation in parts of the area.

Ongoing social housing development brings new residents into the community, including individuals and families from outside Christchurch or overseas. While this adds cultural richness, some arrive without local networks, and language barriers or unfamiliarity with local services can make it harder to connect and participate.

As Bryndwr continues to grow and change, there is an increasing need for easy access to opportunities, spaces, and support that help people connect, feel welcome, and build a sense of belonging.

Strengthening community connections will build on existing strengths, reduce isolation, and foster local pride and a sense of belonging.

What the board will do:

- Support and partner with local networks, community groups, schools, churches and youth organisations to strengthen collaboration and build on existing community strengths.
- Champion and support initiatives that bring people together, including community events, neighbourhood activities, programmes, hui, and youth-led opportunities, that reflect Bryndwr's diversity and support newcomers.
- Support accessible communication tools, (such as community directories, newsletters, and online platforms), to increase awareness of local services and activities.
- Support the development, visibility, and activation of community spaces (including existing spaces like community gardens), and explore opportunities for flexible, welcoming places that enable connection now and into the future.
- Advocate for safe, welcoming, and accessible neighbourhood environments that make it easier for people to connect in everyday way (e.g. walkability, safe streets, and shared spaces).

We will measure our success by:

- Increased participation in community events and local initiatives.
- Positive feedback from residents showing improved, awareness of local services and opportunities.
- More groups, and a wider diversity of groups, actively collaborating, sharing resources, and contributing to community-led initiatives.
- Increased use and visibility of local community spaces and places.
- Evidence of new initiatives, ideas and connections emerging from within the community.

Our priorities

Belfast Road improvements (Blakes to Main North Road)

Why this matters

Belfast Road connects with the Christchurch Northern Corridor Motorway, as well as servicing a new industrial development and the Spring Grove subdivision. It is a busy road and is getting busier. It also plays an essential role in community connectivity, offering the most direct cycling and walking route between Spring Grove and the new Belfast School Senior Campus, the new Woolworths Supermarket, shops on Main North Road, and Sheldon Park via the March Plance entrance.

Belfast contains a number of residential areas divided by industrial zones, Main North Road and the railway. In the long term, the Board wants to establish a strategic plan to connect these communities with walking and cycling routes, divert heavy vehicle traffic away from residential areas and improve landscaping amenity. Improvements to Belfast Road, such as a shared path between Blakes Road and Main North Road, could form the first stage of this plan.

What the board will do:

- Investigate the feasibility of constructing a shared path (pedestrian and cyclists) on Belfast Road between Main North Road and Blakes Road, also connecting to the Christchurch Northern Corridor shared path.
- Advocate to the Council through the Board's submission on the Long Term Plan for funding towards a shared path and safety improvements on Belfast Road between Blakes Road and Belfast Road.
- Advocate for Council staff to prepare a community connectivity plan for Belfast.

We will measure our success by:

- The Board receives a report on the feasibility of constructing a shared path on Belfast Road between Blakes Road and Belfast Road.
- Funding is allocated in the Long Term Plan 2027-37 for safety improvements on Belfast Road.
- Staff initiate a community connectivity plan for the Belfast area.

Radcliffe Road railway crossing safety improvements

Why this matters

A priority in the Board's previous plan was to advocate for traffic safety improvements along the Radcliffe Road corridor including the intersection with Main North Road.

The Board is pleased that safety improvements have now been developed and funding allocated in the Long Term Plan to undertake these changes.

However, the plan for a safe pedestrian/cyclist crossing over the railway line is yet to be approved by KiwiRail. Our Board is keen to continue to advocate strongly for a plan to be approved and implemented.

What the board will do:

- Support Council staff to obtain approval from KiwiRail to create a pedestrian/cycle crossing over the railway line near the Main North Road intersection.

We will measure our success by:

- Pedestrian/cycle crossing approved and implemented.

Our priorities

Sheldon and Nunweek Park improvements

Why this matters

Sheldon Park is a vital recreation space for the Belfast Community, as well as being home to a number of local community groups and sports clubs. The park would benefit from improvements including:

- Community art work on wall at swimming pool
- Building a pump track, possibly partnering with external funders
- Improved drainage for the sport fields
- Re-sealing the car parks

Nunweek Park has been identified as a priority for improvements as part of the Sports Field Network Plan.

The park is well used year-round by multiple sporting codes. However, the park has inadequate bathroom and changing room facilities, has suffered from drainage issues for a number of years and we have received feedback that the layout of the sports fields is sub-optimal.

What the board will do:

- Advocate to the Council through the Board's submission on the Long Term Plan for improved facilities at Sheldon Park and Nunweek Park.
- Investigate external funding opportunities for a pump track at Sheldon Park.
- Repairs to the external wall and community art work at the Belfast swimming pool .
- Advocate for upgrades to the bathroom and changing room facilities at Nunweek Park.
- Advocate for improvements to these parks, including drainage, through the Sports Field Network Plan.
- Ensure that local clubs/organisations and park user groups are engaged with regarding any upgrades.

We will measure our success by:

- Staff investigations including costings for upgrades at Sheldon Park and Nunweek Park completed.
- Where appropriate, funding for upgrades included in the 2027-37 Long Term Plan.
- Both parks included in the Sports Field Network Plan.
- External funding opportunities for the installation of a pump track at Sheldon Park are identified.
- Car parks and driveway at Sheldon Park have been re-sealed.



Nunweek Park



Belfast pool at Sheldon Park

Community board funding

In Christchurch, Community Board funding is allocated to each Community Board based on population and equity. The NZ Deprivation Index is the tool used to measure the equity portion of the allocation. The Council resolved to use the formula of 60% population and 40% equity when determining the allocations to each Board.

The Waimāero Fendalton-Waimairi-Harewood Community Board has three key funds available for allocation each year:

Strengthening Communities Fund

An annual contestable round - opens in April each year. Provides funding for the period of 1 September to 30 August each year.

The purpose of this fund is to support community-focused organisations whose projects contribute to the strengthening of community wellbeing in the Christchurch city area.

Successful organisations will be those who demonstrate they are sustainable, strategic, community-focused groups who have a significant presence within their community of benefit. Successful projects will also clearly demonstrate their contribution to the Council funding outcomes and priorities.

Discretionary Response Fund

Open for applications all year - 1 July to 30 June (or when the fund is fully spent).

The purpose of this fund is to assist community groups where the project and funding request falls outside other council funding criteria and/or closing dates. This fund is also for emergency funding for unforeseen situations.

Community Board projects (events and awards) are also funded from this fund.

Youth Development Fund

The purpose of the Youth Development Fund is to celebrate and support young people living in the Fendalton-Waimairi-Harewood area by providing financial assistance for their development. The Community Board also seeks to acknowledge young people's effort, achievement and potential excellence in the community.

The Community Board will consider applications for the following activities:

- **Personal Development and Growth** - For example leadership training, career development, Outward Bound, Spirit of Adventure, extra-curricular educational opportunities.
- **Representation at Events** - Applicants can apply for assistance if they have been selected to represent their school, team, club or community at a local, national or international event or competition. This includes sporting, cultural and community events.

If you would like to know more about the board's community funding, please contact any of the staff below:

- Natalie Dally - Community Development Advisor - **03 941 5326**
- Karen Boag - Community Development Advisor - **03 941 5273**
- Lisa Gregory - Community Recreation Advisor - **03 94106729**

Your community board members



Jason Middlemiss
Harewood Ward (Board Chair)
027 777 0108
jason.middlemiss@ccc.govt.nz



Nicola McCormick
Waimairi Ward (Deputy Chair)
027 235 4511
nicola.mccormick@ccc.govt.nz



Bridget Williams
Fendalton Ward
027 698 6383
bridget.williams@ccc.govt.nz



James Gough
Fendalton Ward
027 231 4393
james.gough@ccc.govt.nz



Ben Spittle
Waimairi Ward
021 310 071
ben.spittle@ccc.govt.nz



Lucy Keown
Harewood Ward
027 456 1213
lucy.keown@ccc.govt.nz



Sam MacDonald
Waimairi Ward Councillor
027 333 9215
sam.macdonald@ccc.govt.nz



David Cartwright
Fendalton Ward Councillor
027 496 5977
david.cartwright@ccc.govt.nz



Aaron Keown
Harewood Ward Councillor
021 822 766
aaron.keown@ccc.govt.nz

The Waimāero Fendalton-Waimairi-Harewood Community Board generally meets on the third Monday of each month at 4.30pm at the Fendalton Service Centre on Clyde Road. These meetings are open to the public and live-streamed on our YouTube channel [here](#).

Agendas and minutes for each meeting can be found on the council's website at ccc.govt.nz.

If you would like to speak at a board meeting please contact the Community Board Adviser on 03 941 6728.

The Community Board also has a webpage that can be found [here](#).

